



BICYCLE & PEDESTRIAN ADVISORY COMMITTEE (BPAC)

August 8th, 2025

Ed Ball Building, Room #3112

ABOUT US

The BPAC educates, supports, promotes, & advocates for the needs of pedestrians & bicyclists throughout the City of Jacksonville



AGENDA



Jacksonville Bicycle and Pedestrian Advisory Committee (BPAC)	
Agenda for 08/07/2025 Meeting	
5:30-5:35 PM	Introductions and Adoption of Minutes
5:35-5:40 PM	New Member Induction
5:40-5:50 PM	Announcement: Tanner Pletzke Tanner Pletzke, Bicycle and Pedestrian Coordinator Jr., City of Jacksonville
5:50-6:05 PM	Coordination: World Day of Remembrance Lauren Rushing, BPAC Chair
6:05-6:20 PM	Discussion: Bike Walk Jacksonville Lauren Rushing, BPAC Chair
6:20-6:40 PM	Presentation: Talbot Island Bicycling Safety Mike Spino, Resident, NFBC
6:40-6:50 PM	Presentation: Oak Street Trail Connectors at Boone Park South Matt Fall, Sr Bicycle and Pedestrian Coordinator, City of Jacksonville
6:50-7:00 PM	Open Discussion / Rapid Fire
6:55-7:00 PM	Wrap Up / Upcoming Events / Announcements / Next Meeting Info
7:00 PM	Adjourn



Announcement: Tanner Pletzke

Tanner Pletzke, Bike-Ped Coordinator Jr., City of Jacksonville



JACKSONVILLE

World Day of Remembrance

For Traffic Victims

2025

LAUREN RUSHING, BPAC CHAIR



World Day of Remembrance

What is it?

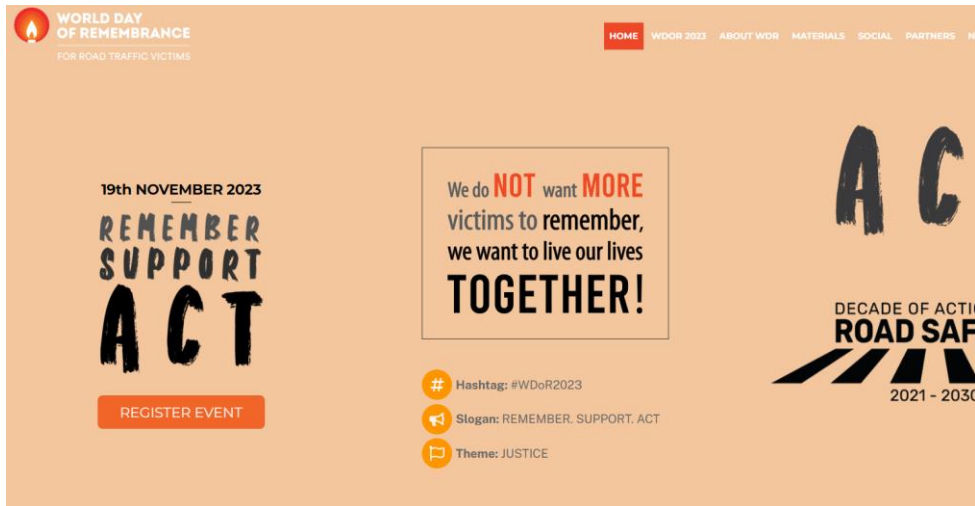
- Global day to honor those **who have been killed and seriously injured** on the world's roads and to acknowledge the suffering of all affected victims, families and communities.
- A tool advocates to **demonstrate the enormous scale and impact that inadequate road safety has on our community** and to call for **urgent concerted action for change**.
- An opportunity for governments and community organizations to showcase projects and initiatives in place to combat this important issue.





Resources

WorldDayofRemembrance.



Wdor-usa.org



Vision Zero Network: Kick-Off on August 13



Decision Points

1. Date:

- Saturday, November 15; or
- Sunday, November 16

2. Venue:

- Riverside Arts Market (RAM)
- Memorial Park

3. Fundraising:

- APA Grant
- Charging Vendors
- Taking Donations



Decision Points

4. Hosting Organizations / Sponsors:

- City of Jacksonville
- North Florida TPO
- First Coast Section APA
- Angels for Allison

5. Speakers (last year we had 6 speakers)

- Mayor
- Victims (ideas?)
- Council Members
- City – Matt on Vision Zero
- JSO
- FDOT



Materials Needed for Promotion

Now

1. New Logo (Bike Walk Jax)
2. Brochure

Later

1. Flyer
2. Social Media Graphics



Separate planning meeting?





Bike Walk Jax: Transition Discussion

Lauren Rushing, BPAC Chair

Decision Points

- 1. Vote: Begin using name “Bike Walk Jax”**
- 2. Vote: Pursue Non-Profit Status 501(c)(3)**
- 3. Board of Directors**
- 4. Next Meeting: Establish New Bylaws & anything else needed to obtain 501(c)(3)**





Presentation: Talbot Island Bicycling Safety

Mike Spino, Resident, Advocate, NFBC



Talbot Islands Cycling Safety

BPAC Discussion August 2025

Mike Spino, NFBC and Friends of the Amelia Island Trail

Mike Pikula, NFBC and President, Friends of the Amelia Island Trail

Steve Tocknell, NFBC Pedaling for Safety

The NFBC and the Amelia Island Cycling group have had safety concerns about cycling in the Talbot Islands for years. Specifically, the width and maintenance of road shoulders and the speed and attentiveness of vehicle traffic.

On April 22, 2025 our ride and safety leader, Joe Pitchko, was hit by the side view mirror of a work vehicle while cycling north on the shoulder of A1A on the south end of Little Talbot Island.

Situation – Motor vehicle traffic on the Talbot Islands is proceeding unsafely with distracted driving, speeding and reckless passing.

What have we done? Daily safety briefings: helmets, lights, mirrors, high viz clothing, lane discipline. The NFBC and the Amelia Island Cycling group have asked cyclists to ride the trails on the Talbot islands and stay off the road as much as possible.

Who have we talked with? Meetings with the CTST in June and FDOT in July.

FDOT is conducting a safety study.

COJ and SUN Trail are reviewing our recommendations.

Bottom line from the FDOT discussions – Get cyclists off Heckscher Dr. and onto the adjacent trail from the St. John's River Ferry to the north end of Big Talbot Island State Park.



TIMUCUAN TRAIL FROM SJR FERRY TO NASSAU RIVER BRIDGE
Total distance 9.12 miles between Ferry and Nassau River Bridge

Legend

-  St Johns River Ferry

Google Earth



Timucuan Trail Connector

SUN Trail is working on “Heckscher Drive (State Road A1A/State Road 105) Timucuan Trail from Huguenot Park to Ft. George River Bridge”. More information is online here: <https://nflroads.com/ProjectDetails.aspx?p=5045>

The project lets November 19, 2025. Construction would commence approximately 2-3 months after that date. The construction cost is \$6,172,340/270 construction days.





Fast cars

A view looking southbound approx 2/10 of a mile south of Talbot Island SP main entrance. This is well north of the accident site. This is the ONLY speed limit sign posted southbound OR northbound within the State Park on A1A.

FDOT is doing speed and passing studies.

COJ has recommended signage only for the non-SUP section

Signage for Cyclists on the Shoulder:

Bicycle Warning Sign (W11-1) used to alert drivers to the presence of cyclists on the shoulder

Supplemental Plaques for Emphasis (W16-7P)
ON SHOULDER

Signage for Distracted Driving Awareness:

General Warning Signs "STAY ALERT" or "NO TEXTING"

Regulatory Signs "NO CELL PHONE USE"



NFBC and AI Cycling support the use of signage thru out the Timucuan Trail especially from the Ft. George Bridge to the LTSP entrance where distracted driving is most prevalent



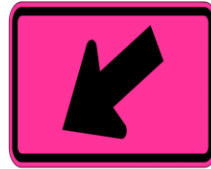
W16-7PL
Downward Diagonal Left Arrow (plaque)



W16-7PL
Downward Diagonal Left Arrow (plaque)



W16-7PL
Downward Diagonal Left Arrow (plaque)



W16-7PL
Downward Diagonal Left Arrow (plaque)



W16-7PR
Downward Diagonal Right Arrow (plaque)

Sign images from the Manual of Traffic Signs -<http://www.traffic-signs.us/>
These sign images copyright Richard C. Moeur. All rights reserved.



W16-7PR
Downward Diagonal Right Arrow (plaque)

Sign images from the Manual of Traffic Signs -<http://www.traffic-signs.us/>
These sign images copyright Richard C. Moeur. All rights reserved.



W16-7PR
Downward Diagonal Right Arrow (plaque)

Sign images from the Manual of Traffic Signs -<http://www.traffic-signs.us/>
These sign images copyright Richard C. Moeur. All rights reserved.



W16-7PR
Downward Diagonal Right Arrow (plaque)

Sign images from the Manual of Traffic Signs -<http://www.traffic-signs.us/>
These sign images copyright Richard C. Moeur. All rights reserved.



W11-1
Bicycle

Sign image from the Manual of Traffic Signs -<http://www.traffic-signs.us/>
This sign image copyright Richard C. Moeur. All rights reserved.

Narrow shoulder with
encroachment.

Shovel marks edge of
pavement.



Little Talbot State Park Entrance needs a trail access sign



Trail Access Signs

There are 6 trail accesses that are “unsigned” and would help guide cyclists off A1A:

The 3 parking areas for Big Talbot Island State Park

The entrance to LTSP

The 2 accesses on Simpsons Creek bridge as seen here



Talbot Island Trail Access

There are three parking area accesses to the trail on Big Talbot. None are paved and most cyclists must dismount and walk to the trail from the road.

20' of paving at the south end of the Blackrock and Big Pine Trail parking areas would connect the trail to the driveway aprons and make the trail accessible for cyclists from A1A



Bluffs Parking Entrance - BTSP

**300' of paving from the A1A
would connect safely to trail at
the Bluff's parking entrance**



Maintenance and signage on Big Talbot Island Trail

Trim back brush around curves to improve visibility especially on the north end of Big Talbot between the Blackrock parking area and the Bluffs parking area

Install “Cyclists Single File” at the curves on the north end of Big Talbot at the Bluffs trail entrance southbound and northbound and around the curves in both directions enroute to Blackrock parking area. Cyclists are riding side by side on curves with limited visibility.



Thanks!

mikespino@bellsouth.net

afeagle31@aol.com

stevetock@comcast.net

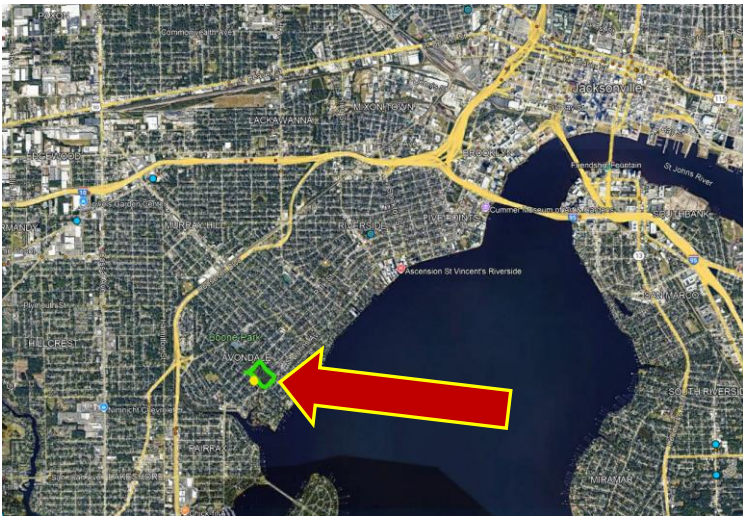
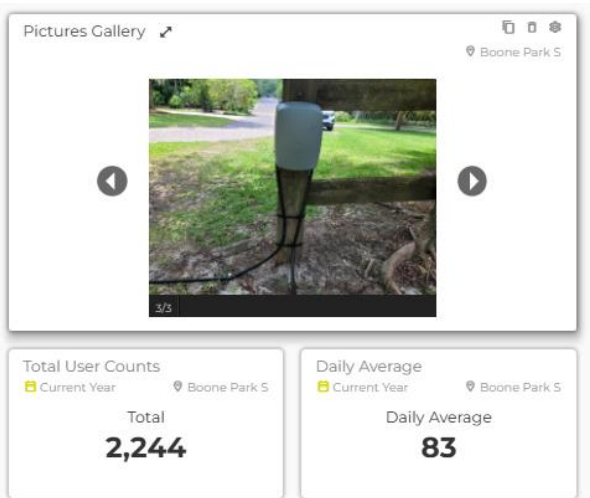


Presentation: Oak Street Trail Connectors at Boone Park South

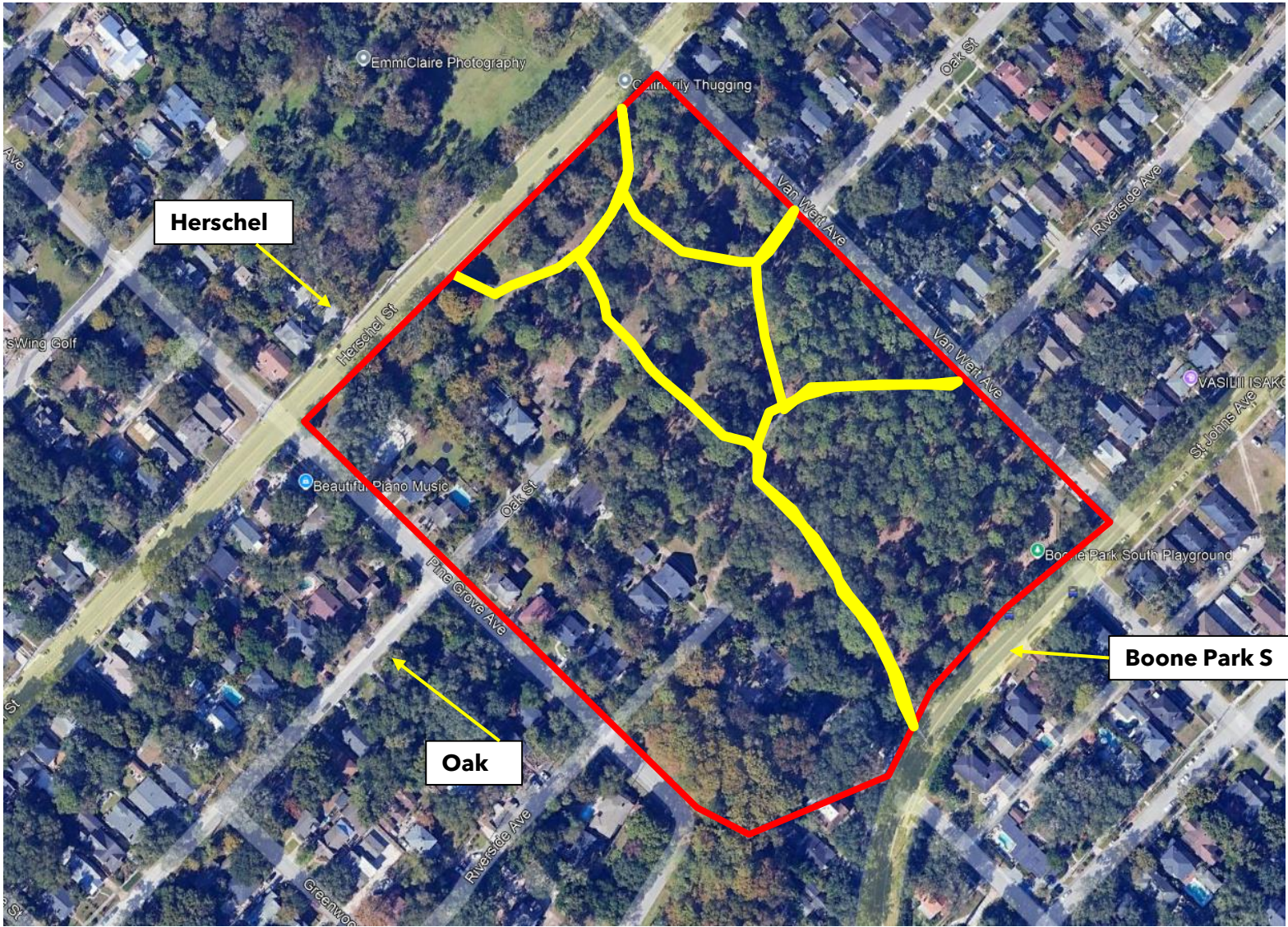
Matt Fall, Sr Bike-Ped Coordinator, City of Jacksonville



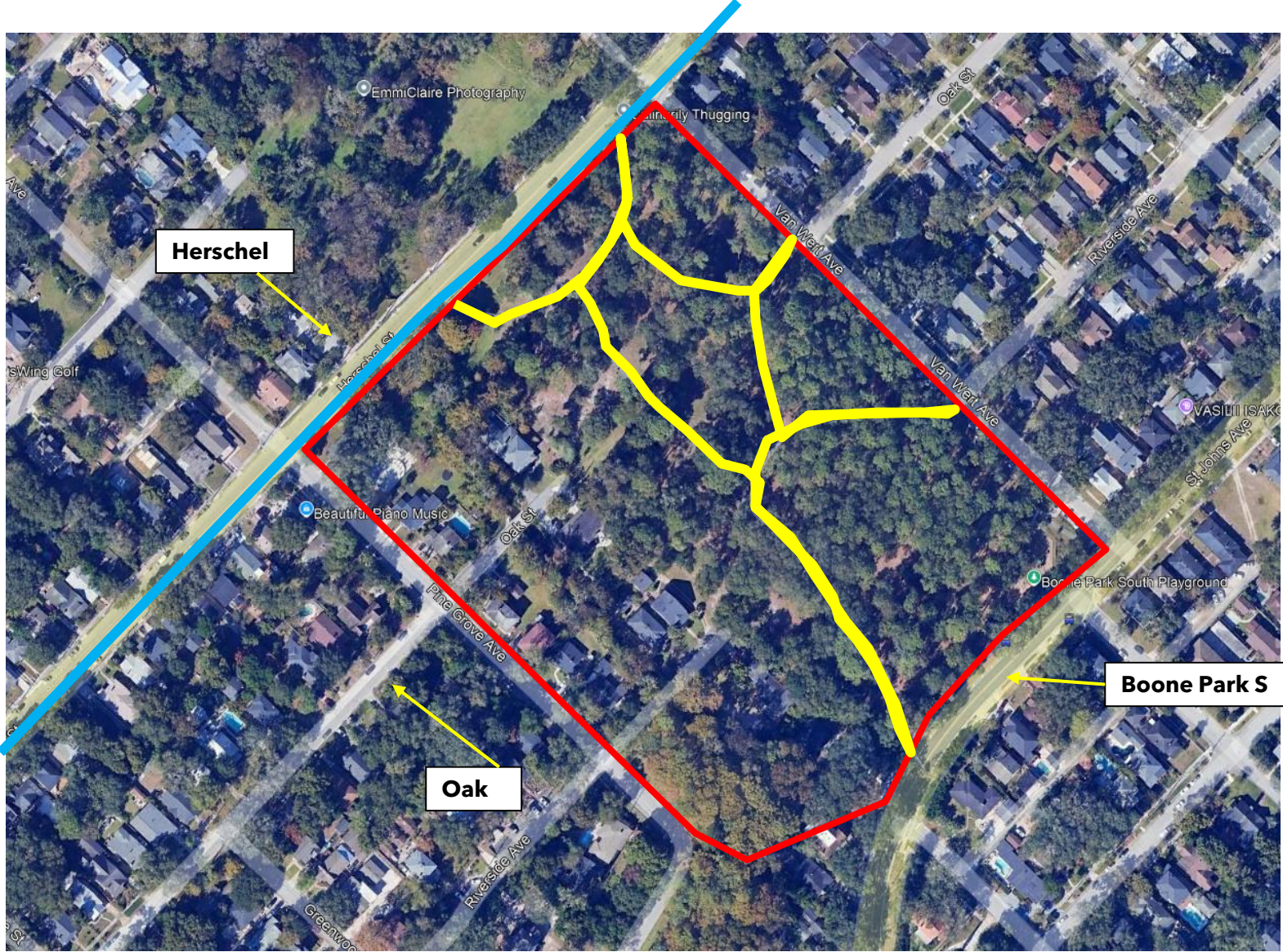
Boone Park South: Trail Counts



Boone Park South: Existing Conditions



Boone Park South: Existing Conditions



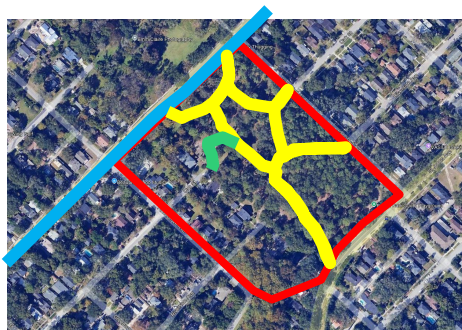
Boone Park South: Proposed Connection



Boone Park South: Existing Conditions



Boone Park South: Proposed Connection









Upcoming Events

Group/All





Discussion / Rapid Fire Topics

Group/All



