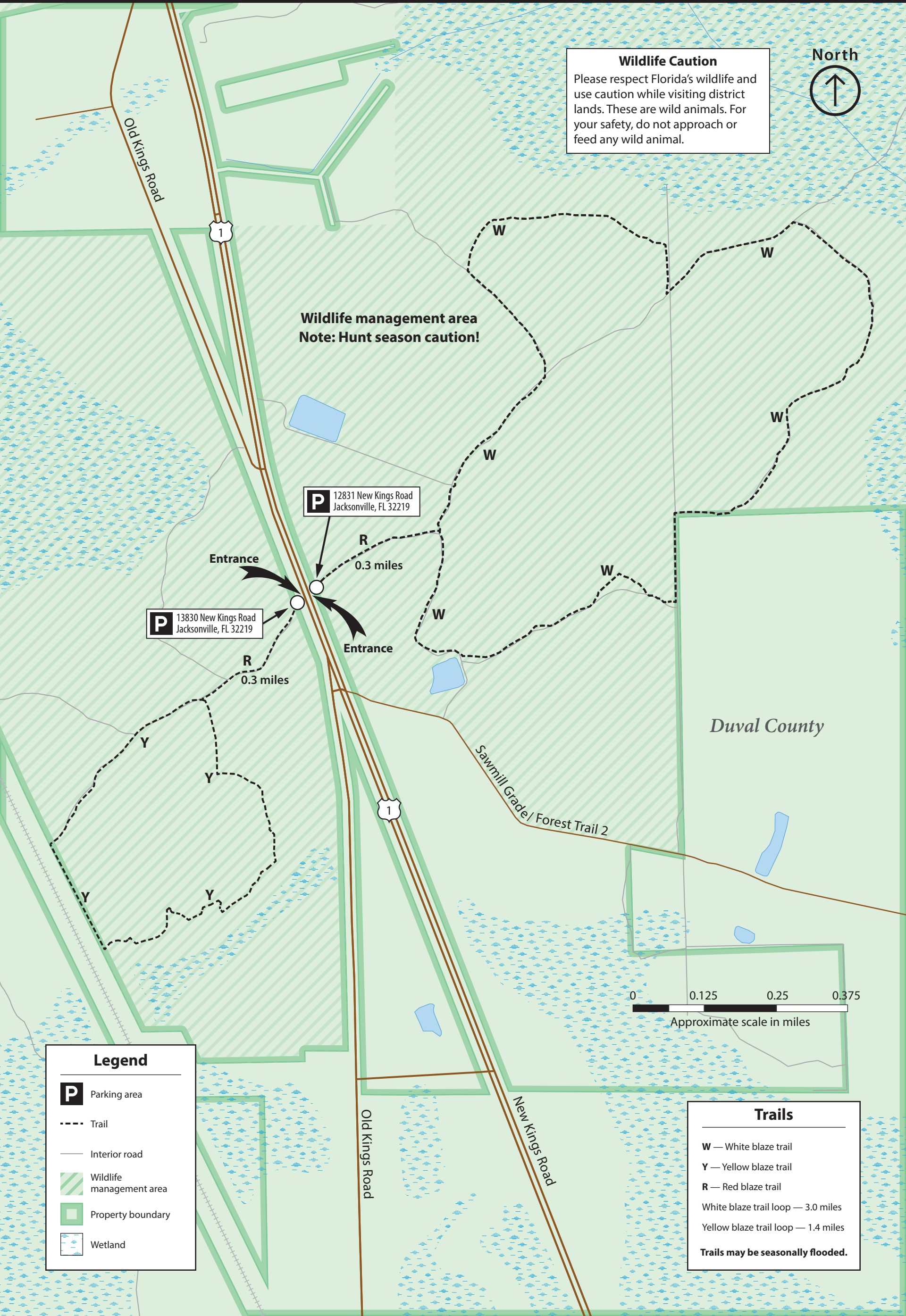




# Thomas Creek Conservation Area



**Wildlife Caution**  
Please respect Florida's wildlife and use caution while visiting district lands. These are wild animals. For your safety, do not approach or feed any wild animal.



**Wildlife management area**  
Note: Hunt season caution!

**P** 12831 New Kings Road  
Jacksonville, FL 32219

**P** 13830 New Kings Road  
Jacksonville, FL 32219

Entrance

Entrance

R  
0.3 miles

R  
0.3 miles

Duval County

Sawmill Grade / Forest Trail 2

0 0.125 0.25 0.375  
Approximate scale in miles

**Legend**

- P** Parking area
- Trail
- Interior road
- ▨ Wildlife management area
- ▭ Property boundary
- ▨ Wetland

**Trails**

- W** — White blaze trail
- Y** — Yellow blaze trail
- R** — Red blaze trail
- White blaze trail loop — 3.0 miles
- Yellow blaze trail loop — 1.4 miles

**Trails may be seasonally flooded.**