

Jacksonville Tree Commission

Wednesday March 19, 2025, 9:30 AM
Ed Ball Building, 10th Floor, Conference Room 5
and Zoom Webinar

Commissioners: Curtis Hart, Chair
Susan Fraser
Chris Miller
Nina Sickler
William Burke, Vice Chair
Alden Howell

Advisors: Jonathan Colburn
Shannon MacGillis
Jose Regueiro
Justin Gearhart

Staff: Joe Rainey

AGENDA

Order of Agenda is Subject to Change

- 1. Call to Order - Chair**
- 2. Roll Call and Verification of Quorum – Chair**
- 3. Submittal of Speaker's Cards – Chair**
 - a) A raised hand icon will be acknowledged by the Chair.
 - b) For those attending in person, paper speakers' cards will be available.
- 4. Public Comment:**
- 5. Action Items:**
 - a) Approval of Minutes February 19, 2025 – Chair
 - b) Level 3 Project Proposal - **NONE**
 - c) Level 2 Project Proposal
 - i. Neptune Beach Phase 1 – Justin Gearhart
 - ii. Pearl Street – Justin Gearhart
 - iii. Windy Hills – Kathleen McGovern
 - iv. Oceanway Park – Kathleen McGovern
 - v. Terrace Park – Kathleen McGovern
 - vi. Riverview – Kathleen McGovern
 - vii. District 10 – Kathleen McGovern

- d) Updated Additions to Approved Species List – Justin Gearhart

NONE

6. Reports:

- a) Financial Report for Ordinance Tree Fund (15304), Charter Tree Fund (15305) and BJP (Attachment D) – Jose Regueiro
- b) Fund Status of 630-CITY, Remove & Replace and Level 2 Programs (Attachment E) – Justin Gearhart
- c) Status of Level 2 Tree Projects (Attachment F) – Justin Gearhart
- d) Parks Department Project Update – Kathleen McGovern/Jill Enz
- e) UFMP Update --Valerie Feinberg

7. New Business:

- i. Money for Appropriation
- ii. Task Force Update
- iii.

8. Old Business:

- 9. **Adjournment** – Next meeting April 16,2025, 9:30am-11:30am as a Hybrid/Webinar meeting in Ed Ball Building, 10th Floor, Public Works Office, conference room 5.

Jacksonville Tree Commission

Minutes

Wednesday February 19, 2025, - 9:30 AM

Via Zoom Platform & In Person

[Recording of Meeting can be obtained by sending request to
Joe Rainey [jrainey@coj.net]

For approval March 19, 2025

Commissioners:

Curtis L. Hart, Chair (Council Appointee; 2021-0033-A)
Susan Fraser (Council Appointee; 2022-0063-A)
Vacant (Mayor Appointee; 2023-0696-A)
William Burke (Mayor Appointee; 2023-0695-A)
Alden Howell (Council Appointee; 2024-0388-A)
Chris Miller Council Liaison

Advisors:

Jonathan Colburn - Urban Forestry Manager
Justin Gearhart - City Arborist
Shannon MacGillis - Office of General Counsel
Jose Regueiro - Accounting

Staff: Joe Rainey

1. Call to Order

Conducted by Chair

2. Roll Call and Verification of Quorum

Conducted by Chair, Commissioners present:

Curtis Hart, Chair
Susan Fraser
William Burke
Chris Miller

Quorum present (4, in person): yes

3. Call for Public Speakers (online & card):

Action Items:

1. Prior Meeting Minutes.

Issue: The minutes from January 15, 2024, APPROVED

Motion: Approve, as presented.

Moved by: Susan Fraser

Second: William Burke

Vote: September minutes approved, unanimous.

2. Level 2 Project Proposal(s):

i. Jacksonville Zoo- Justin Gearhart

Received a request for planting at Jacksonville zoo, adding new path connecting their boat ramp to the zoo. The zoo is public property, owned by City of Jacksonville. They're requesting sixty four trees. Seventeen Bald Cypress, nineteen Live Oak, five Southern Red Cedar, thirteen Little Gems, and ten Cabbage Palms.

\$141,164.00

Motion: Approve, as presented.

Moved by: Susan Fraser

Second: William Burke

Vote: Jacksonville Zoo approved, unanimous

ii. Five Points - Justin Gearhart

Request to remove and replace Palm Trees in 5-Points, retain the Crepe Myrtles and relandscape the beds. 13 Eagleston Holly and Winged Elm.

\$35,226.79

Motion: Approve, as presented.

Moved by: Susan Fraser

Second: William Burke

Vote: Five Points approved, unanimous

Actions: Correct Check list

iii. Amelia View Phase 3 - Justin Gearhart

A tree planting project has been requested for planting in the community of Amelia View off of Starratt road. This project includes the planting of 22 total trees, with no tree removals necessary. One Japanese Blueberry, two Live Oak, 11 Southern Red Cedar, eight Red Maple.

\$44,630.60

Motion: Approve, as presented.

Moved by: William Burke

Second: Chris Miller

Vote: Amelia View approved, unanimous

3. Financial Report: Jose Regueiro:

a. Combined revenues: Combined Revenues for Fiscal YTD are \$2.15M compared to \$1.43K Jan-24. An increase of \$7.23K year-on-year. Combined Expenses for Fiscal YTD are \$1.15M compared to \$2.461 Mon Jan-24. A decrease of \$1.31M year-on-year. Combined Revenues for Jan-25 were \$323.4K compared to \$494.1 K for Jan-24, a decrease of \$170.7K. Meanwhile, expenses were \$381.1K and \$640.3K on Jan-25 and Jan-24, respectively. Total unallocated funds were \$22.38M for Jan-25.

b. Fund Status: Justin Gearhart: Total funds not appropriated \$31.86M. Remaining in the three pools in public works \$1.78M. For 630-City \$2.09M. For level 2 \$4.1M and Level 3 \$2.3M.

Total obligated funds \$3.475M as of January, 2025

(See Details on PGs 25-47 of January Agenda)

4. Status of Level 2: Justin Gerhart: No update from year end

Hanna Park is off warranty. Merrill Road and Murray Hill and Gonzalez Park installs complete. They're now on warranty. Sheffield Park and Westside Park is off warranty.

No Motion/ No Vote.

5. Parks Department Project Update: Maxwell Park is complete Black Hammock Island Park is complete, Touchton park is about ninety percent complete. Rockridge also, probably around ninety percent. Brackridge also, probably around ninety percent. Glynlia is in progress, fifty percent right now. Julington, Durban, Walter Anderson, Genovar, Greenland, Palmetto Leaves are upcoming to be scheduled.

No Motion/ No Vote.

(See Details on PGs 48-51 of February Agenda)

6. UFMP Update: Valerie Feinberg: UFMP has engaged the services of consultant Davie Resource Group (a division of Davey Tree Expert Company), Representatives came to introduce themselves and answer questions.

CONCERNS: Questions regarding scope (City owned property vs entirety of county and best practices), communications of developments with tree Commission and details of Master Plan. Request for greater details of scope of work and end goals.

No Motion/ No Vote.

7. New Business

Hart: Silva Cell tour at RiversEdge. Discussion regarding install details and tour. No representation to provide details for scheduled visit. Trail infrastructure is complete. Calander has problems and visits will need to be scheduled with Jill Enz directly.

Ordinance 2025-102: Discussion of initial ordinance details, the ordinance is still in committees being modified and approved and are subject to change as advisement is provided. Suggested assessment be made of impact to tree commission should ordinance be past. Details of possible changes to tree fund application in tree size, type and density.

No Motion/ No Vote.

(See Details on PGs 52-60 of January Agenda)

END OF MEETING 10:50 AM

ATTACHMENT 1



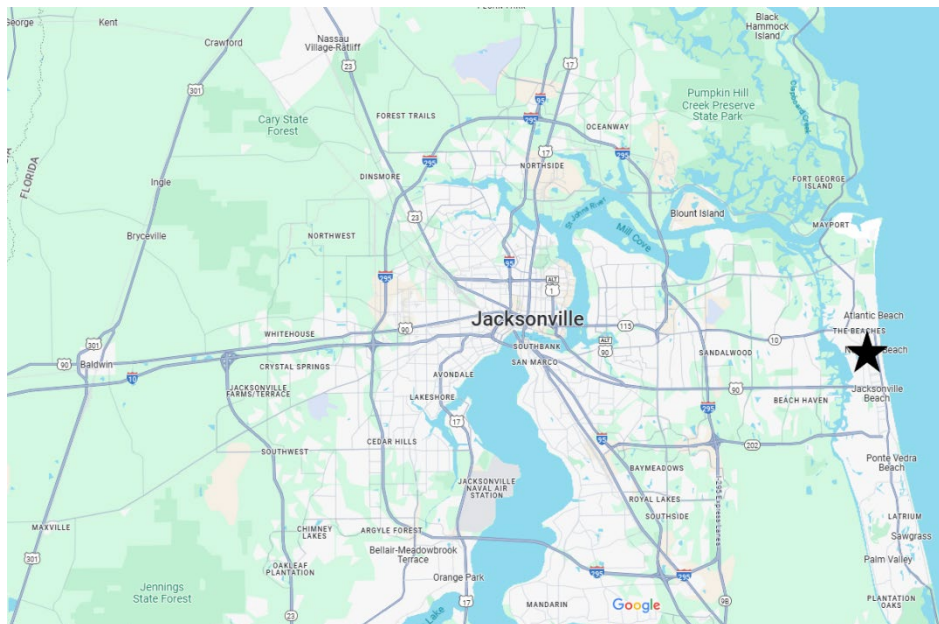
Neptune Beach 2025 Phase 1 Level II

Scope of Work

Description:

A tree planting project has been requested for planting in the Right of Way of Florida Blvd between Hagler Drive and 4th St. In addition this project adds trees to Jarboe Park. This project will take place in City Council District 13 and includes the planting of a variety of trees that will serve as an aesthetic improvement and a heat reduction purpose. In addition, these plantings will help to filter and slow down stormwater runoff before reaching the city's stormwater management infrastructure. This project includes the planting of 21 total trees, with no tree removals necessary. To see a map of the planting plan, please see: <https://pg-cloud.com/JacksonvilleFL/?scenario=Neptune-Beach-Florida-Ave-Level-2>. All trees will be planted on public right of way areas within Duval County.

Approximate location of planting project within Duval County.



LEVEL 2 COMMUNITY ORGANIZATION TREE PLANTING PROGRAM

The form below provides individual citizens and organizations with the opportunity to suggest a location for a tree planting project within Duval County that proposes to use funds from the City of Jacksonville Tree Protection and Related Expenses Trust Fund. If a citizen or organization is interested in suggesting a planting location for the City to implement, then use this form.

Requirements to utilize this program:

1. The location of the proposed planting must be:
 - a. In Duval County; and
 - b. On public property, such as a road right-of-way; a local, state or national park; Duval County School Board property, etc.

Complete the following information below:

1. Name/title of project:
2. Legal name of organization/citizen making suggestion:
3. Organization or citizen mailing address:
4. Contact phone number:
Contact e-mail:
5. Location/address of planting project:
6. Has project information been shared with the Council Member of the district?
7. Rationale for project (include information about the public benefit of the project):
8. Description of project:

If a citizen/organization is interested in proposing a project that they want to administer and implement, a more comprehensive application (Level 3) can be found at the following link: <http://www.coj.net/departments/public-works/tree-commission>.

****To Be Completed By City of Jacksonville/Public Works Staff Only****

Level 2 - Community Organization Tree Planting Program Staff Checklist

Total number of trees to be installed

21

Project Title:

Neptune Beach 2025 Phase 1

☒ Project is to be planted on Public Land

Total number of trees to be removed

0

☒ Project is located in Duval County

Activity	Complete
1 The species of trees are appropriately located.	J6
2 The number and placement of trees is appropriate.	J6
3 Trees being planted are approved pursuant to the 'Tree Commission Approved Tree Planting List.'	J6
4 Shade Trees are preferred; if non-shade trees are proposed, the use is appropriated/acceptable.	J6
5 Less than 25% of the total species of trees being planted are palms.	J6 19%
6 The planting will not interfere with utilities or sight line requirements.	J6
7 The project does not include incidental landscaping. If so, the applicant must justify the reason for its inclusion.	J6
8 Construction required? Yes <input checked="" type="checkbox"/> No <input checked="" type="checkbox"/> If yes, are costs reasonable?	J6
9 Irrigation installed? Yes <input checked="" type="checkbox"/> No <input checked="" type="checkbox"/> If yes, are costs reasonable?	J6
10 The cost of the species of trees selected do not outweigh the benefits of the trees.	J6
11 Low maintenance plants are utilized.	J6
12 Location of plant material and irrigation (if applicable) has minimum adverse impact over time on infrastructure such as walks and roads.	J6
13 Species of trees being planted are beneficial to the City's tree canopy.	J6
14 The project provides unique benefit to the neighborhood, Council District, or City.	J6
15 The project has been reviewed with and meets the needs of the requesting entity.	J6
16 The Councilmember has been notified of the project.	J6 District 13

COMMENTS:



March 11, 2025

Re: Neptune Beach Level 2

In accordance with bid #CP-0165-19, Liberty Landscape Supply proposes the following to include all labor, materials, equipment, taxes, delivery, installation, **2 Year Non-Irrigated** warranty, insurance, etc. for <https://pg-cloud.com/JacksonvilleFL/?scenario=Neptune-Beach-Florida-Ave-Level-2>:

ITEM	QUANTITY	PRICE/UNIT(NON-IRR)	TOTAL
Platanus occidentalis 3" Cal, 12' HT, 6' Spd, 65G or 36" B&B, (American Sycamore)	4	\$ 1,854.09	\$ 7,416.13
Lagestroemia indica 3" Cal, Std, 12' Ht, 6' Spd, 65G or 36" B&B (Muskogee Crape Myrtle)	13	\$ 2,118.96	\$ 40,260.24
Sabal Palmetto 12' CT Cropped, 12" Cal, Booted or Clean Trunk (Cabbage Palm)	4	\$ 1,677.51	\$ 6,710.04
	21 Trees		\$ 54,386.41

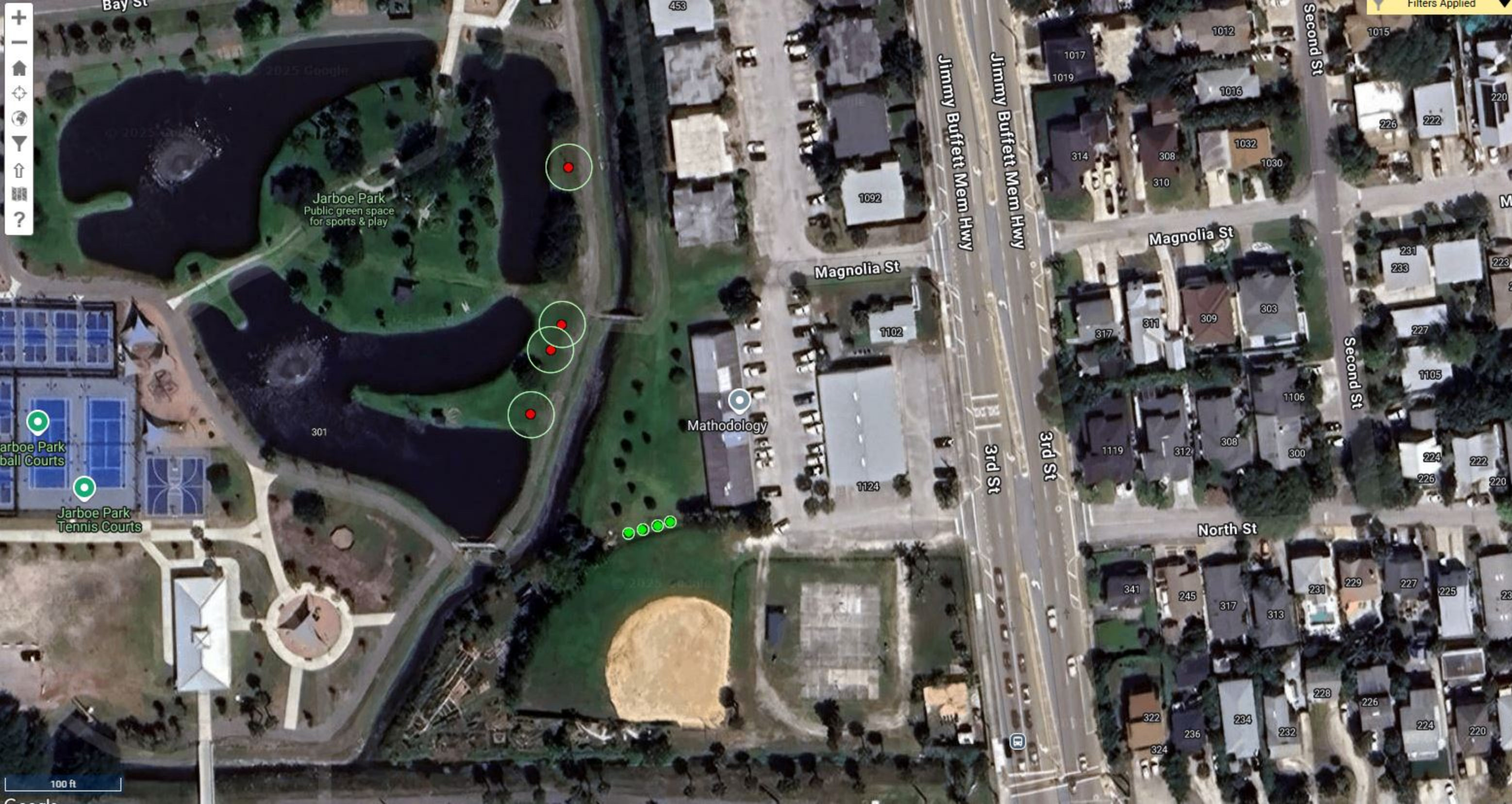
Respectfully

Mike Zaffaroni, Owner/President

Liberty Landscape Supply

13385 N Main St

Jacksonville, FL 32218



LEGEND

Jacksonville, FL

Layer: Trees

Display by: Species

Symbology: Spread Radius

You're viewing the Neptune Beach Phase 1 trees. Showing 8 of 21 sites.

SHOW ALL TREES

SHOW WORK ORDERS

☒ Toggle All ?

☒ ● American Sycamore (4)

☒ ● Cabbage palm (4)

☒ ● Muskogee crapemyrtle (13)

Charts

Layers

☐ ■ ROW

☐ ● Sample Streets

☐ ● 7% Sample

☐ ■ City Allocated Parcels

☐ ■ Boundary

☐ ● Council Districts

☐ ■ Parcels

☐ ■ Streets



Display by: Species

Symbology: Spread Radius

You're viewing the **Neptune Beach Phase 1** trees.
Showing 12 of 21 sites.

[SHOW ALL TREES](#) [SHOW WORK ORDERS](#)

☒ Toggle All ?

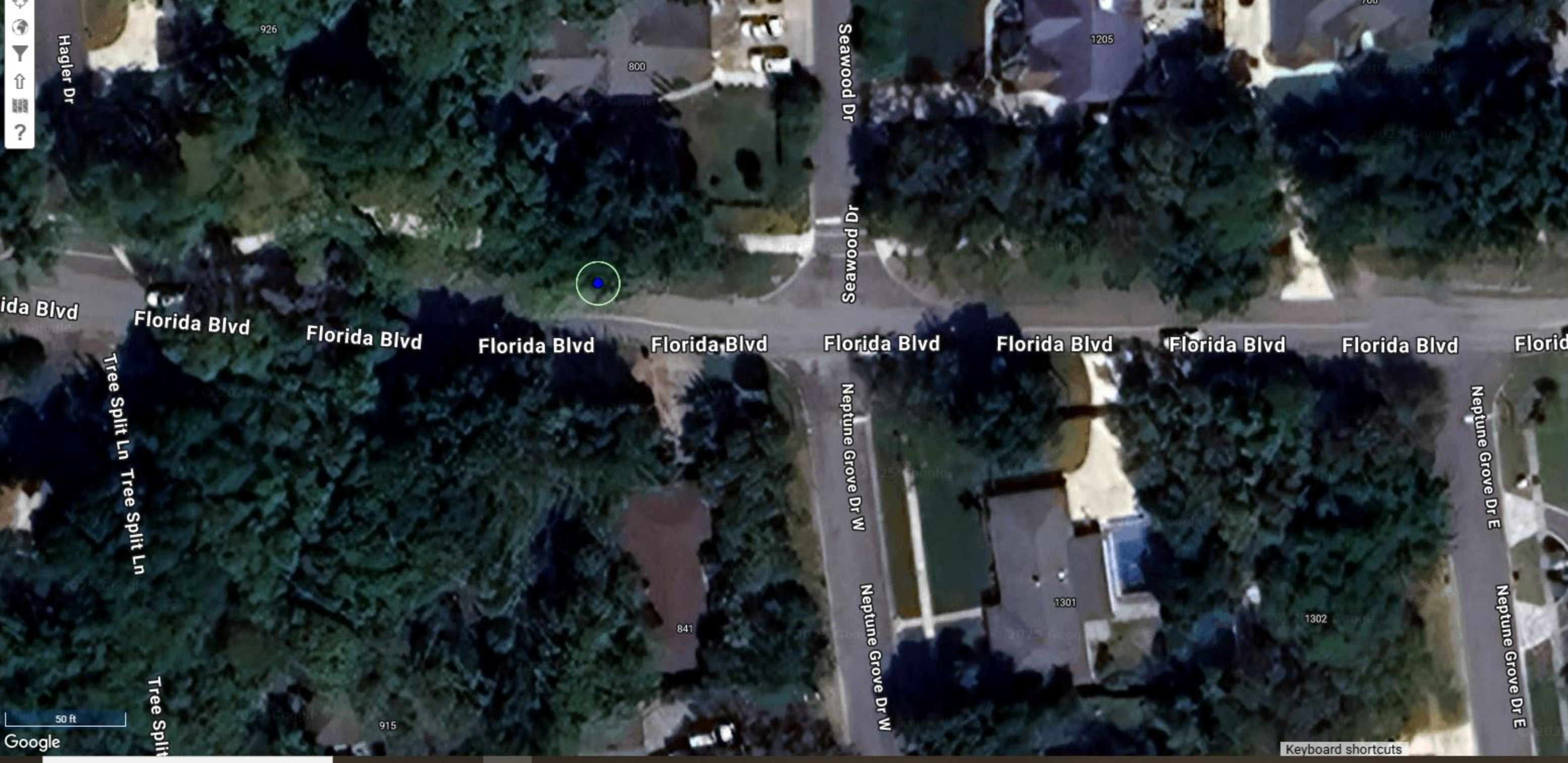
- ☒ ● American Sycamore (4)
- ☒ ● Cabbage palm (4)
- ☒ ● Muskogee crapemyrtle (13)

Charts

Layers

- ☐ ROW
- ☐ Sample Streets
- ☐ 7% Sample
- ☐ City Allocated Parcels
- ☐ Boundary
- ☐ Council Districts
- ☐ Parcels
- ☐ Streets

Keyboard shortcuts



Display By: Species

Symbology: Spread Radius

You're viewing the **Neptune Beach Phase 1** trees.
Showing 1 of 21 sites.

[SHOW ALL TREES](#) [SHOW WORK ORDERS](#)

☒ Toggle All ?

☒ ● American Sycamore (4)

☒ ● Cabbage palm (4)

☒ ● Muskogee crapemyrtle (13)

Charts

Layers

- ☐ ■ ROW
- ☐ ● Sample Streets
- ☐ ● 7% Sample
- ☐ ■ City Allocated Parcels
- ☐ ■ Boundary
- ☐ ● Council Districts
- ☐ ■ Parcels
- ☐ ■ Streets

Keyboard shortcuts



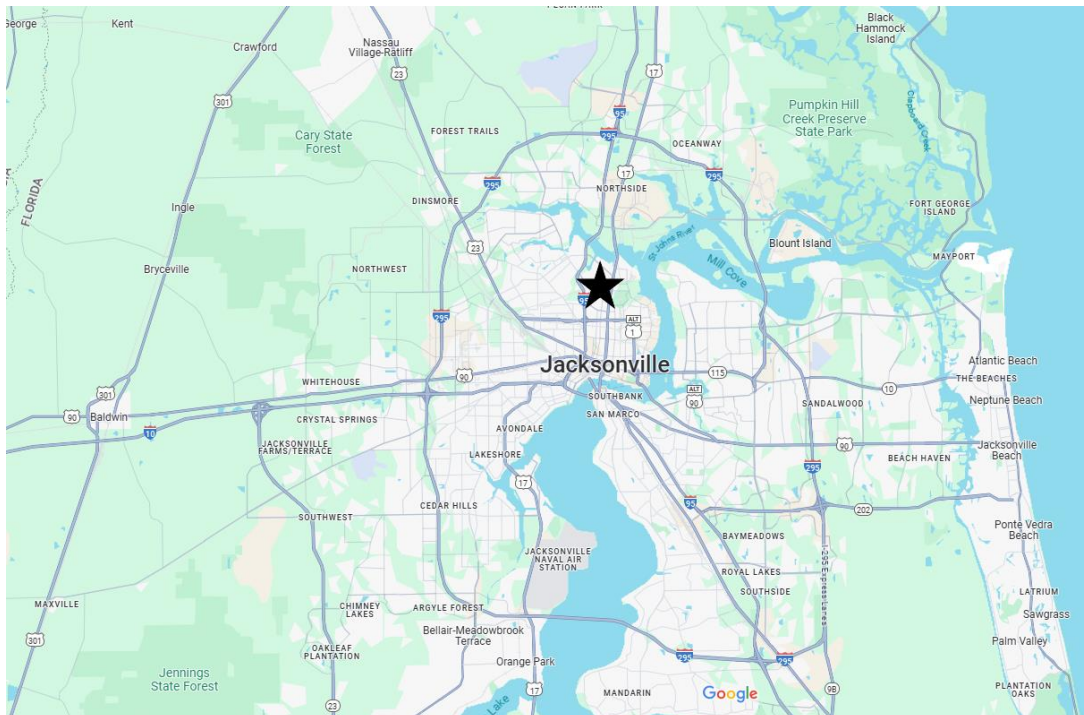
Pearl Street Level II

Scope of Work

Description:

A tree planting project has been requested for planting in the median and Right of Way of Pearl Street between Woodbine Street and West 70th Street. This project will take place in City Council District 10 and includes the planting of a variety of trees that will serve as an aesthetic improvement and a heat reduction purpose. In addition, these plantings will help to filter and slow down stormwater runoff before reaching the city's stormwater management infrastructure. This project includes the planting of 21 total trees, with no tree removals necessary. To see a map of the planting plan, please see <https://pg-cloud.com/JacksonvilleFL/?scenario=Pearl-Street-Level-2>: All trees will be planted on public right of way areas within Duval County.

Approximate location of planting project within Duval County.



LEVEL 2 COMMUNITY ORGANIZATION TREE PLANTING PROGRAM

The form below provides individual citizens and organizations with the opportunity to suggest a location for a tree planting project within Duval County that proposes to use funds from the City of Jacksonville Tree Protection and Related Expenses Trust Fund. If a citizen or organization is interested in suggesting a planting location for the City to implement, then use this form.

Requirements to utilize this program:

1. The location of the proposed planting must be:
 - a. In Duval County; and
 - b. On public property, such as a road right-of-way; a local, state or national park; Duval County School Board property, etc.

Complete the following information below:

1. Name/title of project:
2. Legal name of organization/citizen making suggestion:
3. Organization or citizen mailing address:
4. Contact phone number:
Contact e-mail:
5. Location/address of planting project:
6. Has project information been shared with the Council Member of the district?
7. Rationale for project (include information about the public benefit of the project):
8. Description of project:

If a citizen/organization is interested in proposing a project that they want to administer and implement, a more comprehensive application (Level 3) can be found at the following link: <http://www.coj.net/departments/public-works/tree-commission>.

****To Be Completed By City of Jacksonville/Public Works Staff Only****

Level 2 - Community Organization Tree Planting Program Staff Checklist

Total number of trees to be installed 21

☒ Project is to be planted on Public Land

Total number of trees to be removed 0

☒ Project is located in Duval County

Project Title:

Pearl Street level 2

Activity	Complete
1 The species of trees are appropriately located.	J6
2 The number and placement of trees is appropriate.	J6
3 Trees being planted are approved pursuant to the 'Tree Commission Approved Tree Planting List.'	J6
4 Shade Trees are preferred; if non-shade trees are proposed, the use is appropriated/acceptable.	J6
5 Less than 25% of the total species of trees being planted are palms.	J6
6 The planting will not interfere with utilities or sight line requirements.	J6
7 The project does not include incidental landscaping. If so, the applicant must justify the reason for its inclusion.	J6
8 Construction required? Yes <input checked="" type="checkbox"/> No <input type="checkbox"/> If yes, are costs reasonable?	J6
9 Irrigation installed? Yes <input checked="" type="checkbox"/> No <input type="checkbox"/> If yes, are costs reasonable?	J6
10 The cost of the species of trees selected do not outweigh the benefits of the trees.	J6
11 Low maintenance plants are utilized.	J6
12 Location of plant material and irrigation (if applicable) has minimum adverse impact over time on infrastructure such as walks and roads.	J6
13 Species of trees being planted are beneficial to the City's tree canopy.	J6
14 The project provides unique benefit to the neighborhood, Council District, or City.	J6
15 The project has been reviewed with and meets the needs of the requesting entity.	J6
16 The Councilmember has been notified of the project.	J6

District 10

COMMENTS:



March 11, 2025

Re: Pearl St. Level 2

In accordance with bid #CP-0165-19, Liberty Landscape Supply proposes the following to include all labor, materials, equipment, taxes, delivery, installation, **2 Year Non-Irrigated** warranty, insurance, etc. for <https://pg-cloud.com/JacksonvilleFL/?scenario=Pearl-Street-Level-2>:

ITEM	QUANTITY	PRICE/UNIT(NON-IRR)	TOTAL
Quercus virginiana 3" Cal, 12' HT, 6' Spd, 65G or 36" B&B (Live Oak)	3	\$ 2,295.54	\$ 6,886.62
Pinus elliottii 3" Cal, 10' HT, 3' SPD, 65G or 32" B&B (Slash Pine)	2	\$ 1,589.22	\$ 3,178.44
Taxodium distichum 3.5" Cal, 10' HT, 5' Spd, 65G or 36" B&B (Bald Cypress)	3	\$ 2,118.96	\$ 6,356.88
Ilex attenuata 3" Cal, 12' Ht, 4' Spd, 65G or 36" B&B (Eagleston Holly)	4	\$ 2,207.25	\$ 8,829.00
Elaeocarpus decipiens 12', 4' Spd, FTG, 65G or 36" B&B (Japanese Blueberry)	9	\$ 2,207.25	\$ 19,865.25
MOT	5	\$ 1,400.00	\$ 7,000.00
	21 Trees		\$ 52,119.19

Respectfully

Mike Zaffaroni, Owner/President

Liberty Landscape Supply

13385 N Main St

Jacksonville, FL 32218



Filters Applied

LEGEND

Jacksonville, FL

Layer: Trees

Display by: Species

Symbology: Spread Radius

You're viewing the **Pearl Street Level 2** trees.
Showing 4 of 21 sites.

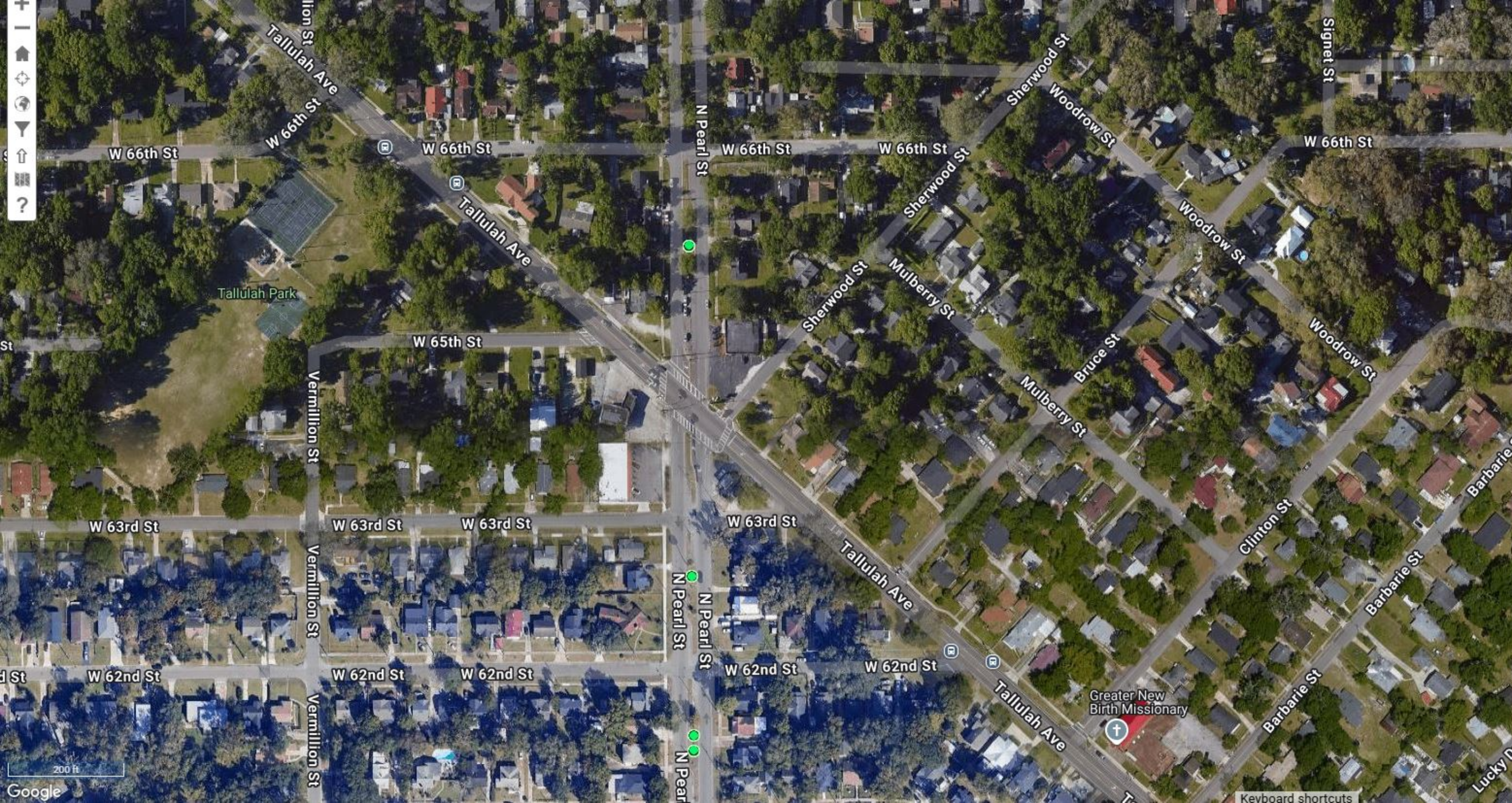
[SHOW ALL TREES](#) [SHOW WORK ORDERS](#)

- ☒ Toggle All ?
- ☒ ● Bald Cypress (3)
 - ☒ ● Eagleston Holly (4)
 - ☒ ● Japanese Blueberry Tree (9)
 - ☒ ● Live Oak (3)
 - ☒ ● Slash pine (2)

Charts

- Layers
- ☐ ROW
 - ☐ Sample Streets
 - ☐ 7% Sample
 - ☐ City Allocated Parcels
 - ☐ Boundary
 - ☐ Council Districts
 - ☐ Parcels
 - ☐ Streets

Keyboard shortcuts



Jacksonville, FL

Layer: Trees ▼

Display by: Species ▼

Symbology: Spread Radius ▼

You're viewing the **Pearl Street Level 2** trees.
Showing 4 of 21 sites.

[SHOW ALL TREES](#) [SHOW WORK ORDERS](#)

☒ Toggle All ?

- ☒ ● Bald Cypress (3)
- ☒ ● Eagleston Holly (4)
- ☒ ● Japanese Blueberry Tree (9)
- ☒ ● Live Oak (3)
- ☒ ● Slash pine (2)

Charts

Layers

- ☐ ■ ● ROW
- ☐ ■ ● Sample Streets
- ☐ ■ ● 7% Sample
- ☐ ■ ● City Allocated Parcels
- ☐ ■ ● Boundary
- ☐ ■ ● Council Districts
- ☐ ■ ● Parcels
- ☐ ■ ● Streets

Keyboard shortcuts



Jacksonville, FL

Layer: Trees

Display by: Species

Symbology: Spread Radius

You're viewing the **Pearl Street Level 2** trees.
Showing 4 of 21 sites.

[SHOW ALL TREES](#)

[SHOW WORK ORDERS](#)

☒ Toggle All ?

☒ ● Bald Cypress (3)

☒ ● Eagleston Holly (4)

☒ ● Japanese Blueberry Tree (9)

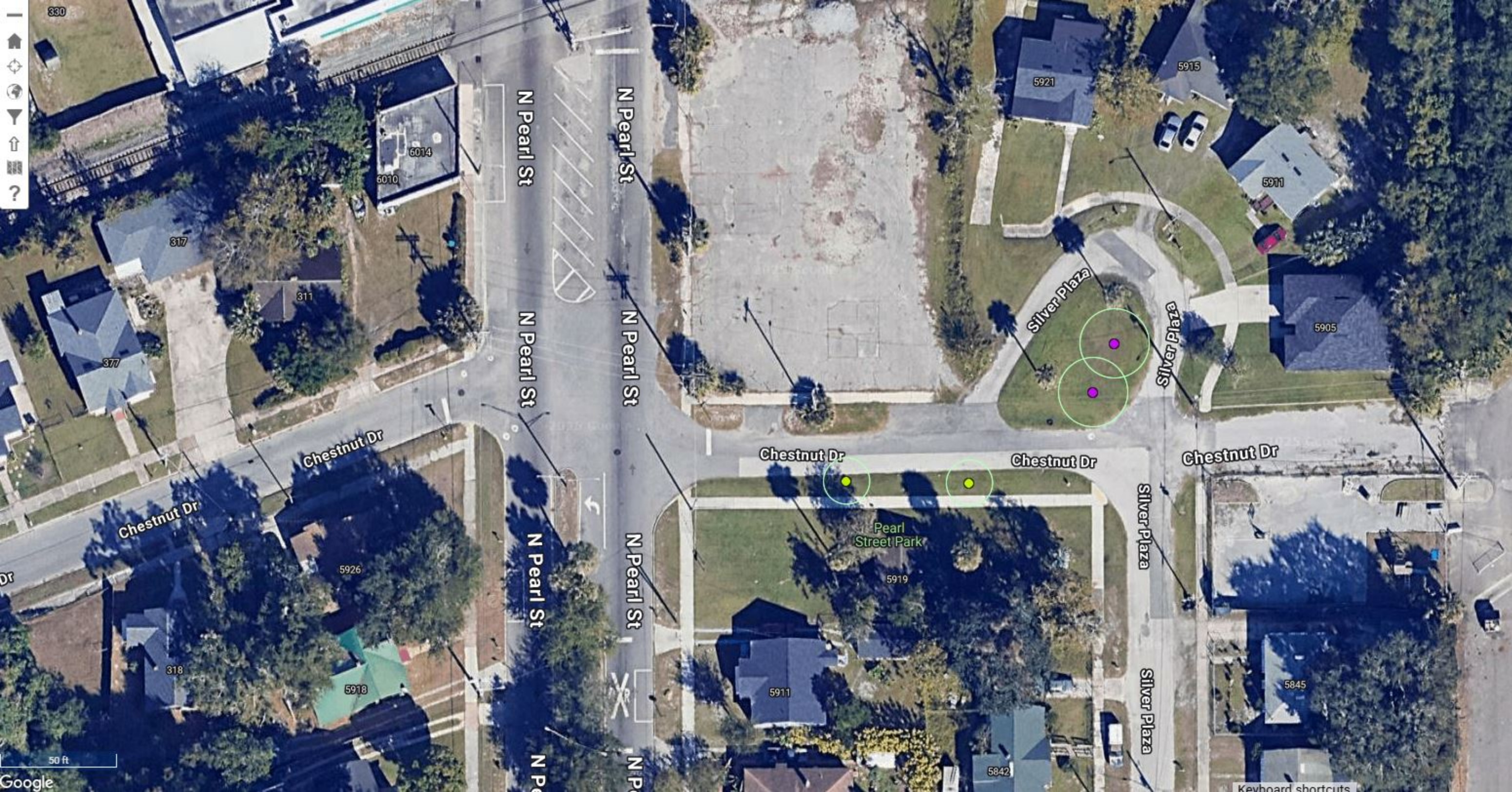
☒ ● Live Oak (3)

☒ ● Slash pine (2)

Charts

Layers

- ☐ ■ ROW
- ☐ ● Sample Streets
- ☐ ● 7% Sample
- ☐ ■ City Allocated Parcels
- ☐ ■ Boundary
- ☐ ● Council Districts
- ☐ ■ Parcels
- ☐ ■ Streets



Jacksonville, FL

Layer: Trees

Display by: Species

Symbology: Spread Radius

You're viewing the **Pearl Street Level 2** trees.
Showing 4 of 21 sites.

[SHOW ALL TREES](#) [SHOW WORK ORDERS](#)

☒ Toggle All ?

- ☒ ● Bald Cypress (3)
- ☒ ● Eagleston Holly (4)
- ☒ ● Japanese Blueberry Tree (9)
- ☒ ● Live Oak (3)
- ☒ ● Slash pine (2)

Charts

Layers

- ☐ ■ ☐ ROW
- ☐ ● Sample Streets
- ☐ ● 7% Sample
- ☐ ■ ☐ City Allocated Parcels
- ☐ ■ ☐ Boundary
- ☐ ● Council Districts
- ☐ ☐ Parcels
- ☐ ☐ Streets

Keyboard shortcuts



Filters Applied

LEGEND

Jacksonville, FL

Layer: Trees

Display by: Species

Symbology: Spread Radius

You're viewing the **Pearl Street Level 2** trees. Showing 1 of 21 sites.

SHOW ALL TREES

SHOW WORK ORDERS

☒ Toggle All ?

☒ ● Bald Cypress (3)

☒ ● Eagleston Holly (4)

☒ ● Japanese Blueberry Tree (9)

☒ ● Live Oak (3)

☒ ● Slash pine (2)

Charts

Layers

☐ ● ROW

☐ ● Sample Streets

☐ ● 7% Sample

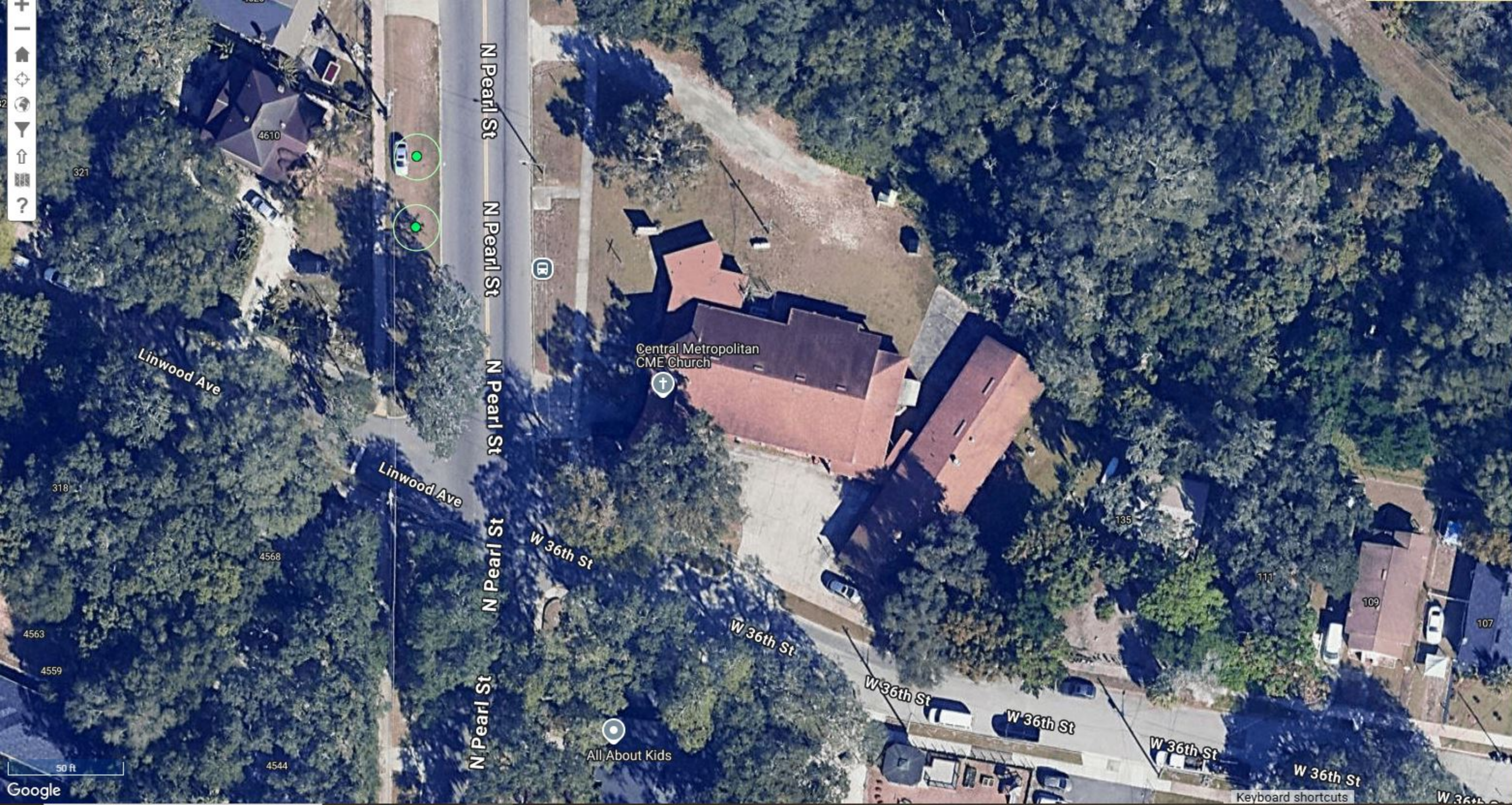
☐ ● City Allocated Parcels

☐ ● Boundary

☐ ● Council Districts

☐ ● Parcels

☐ ● Streets



Jacksonville, FL

Layer: Trees

Display by: Species

Symbology: Spread Radius

You're viewing the **Pearl Street Level 2** trees.
Showing 2 of 21 sites.

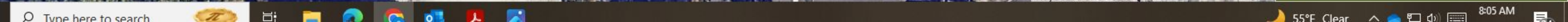
[SHOW ALL TREES](#) [SHOW WORK ORDERS](#)

- ☒ Toggle All
- ☒ Bald Cypress (3)
 - ☒ Eagleston Holly (4)
 - ☒ Japanese Blueberry Tree (9)
 - ☒ Live Oak (3)
 - ☒ Slash pine (2)

Charts

Layers

- ☐ ROW
- ☐ Sample Streets
- ☐ 7% Sample
- ☐ City Allocated Parcels
- ☐ Boundary
- ☐ Council Districts
- ☐ Parcels
- ☐ Streets



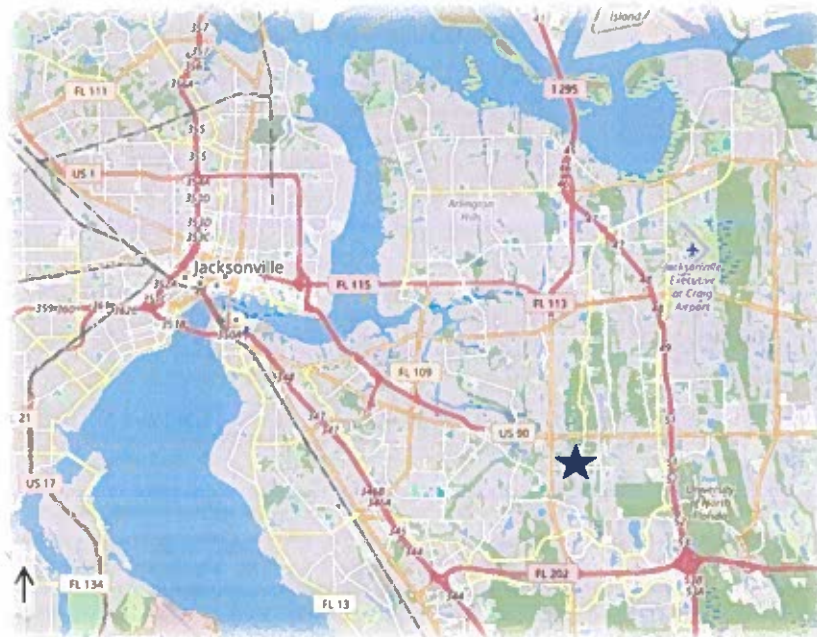


City of Jacksonville Parks – Level 2 Tree Planting

Windy Hills Playground and Park

This is a proposed Level 2 Tree Planting Project designated for City of Jacksonville Windy Hills Park at 3831 Forest Blvd. This proposed tree planting is focus on sites that have could benefit from heat mitigation with large canopy trees. There are also sites included that have been identified as areas that become inundated after heavy rains, and the water-tolerant trees proposed here may help reduce flooding. The trees will help define park use areas and buffer from adjacent uses and roadways. Proposed trees are focused on native, large canopy trees to provide shade and environmental value to the site. Proposed trees will complement the sites both aesthetically and environmentally as well as provide shade to playground equipment and amenities. The trees will include one-year warranty/maintenance. The projects can be viewed individually in the COJ Canopy Planner.

<https://pg-cloud.com/jacksonvilleFL/>



LEVEL 2 COMMUNITY ORGANIZATION TREE PLANTING PROGRAM

The form below provides individual citizens and organizations with the opportunity to suggest a location for a tree planting project within Duval County that proposes to use funds from the City of Jacksonville Tree Protection and Related Expenses Trust Fund. If a citizen or organization is interested in suggesting a planting location for the City to implement, then use this form.

Requirements to utilize this program:

1. The location of the proposed planting must be:
 - a. In Duval County; and
 - b. On public property, such as a road right-of-way; a local, state or national park; Duval County School Board property, etc.
2. The number of trees requested may not exceed 200.

Complete the following information below:

1. Name/title of project: Windy Hills Park and Playground
2. Legal name of organization/citizen making suggestion:
630-CITY Request
3. Organization or citizen mailing address:
Adjacent Resident - 630-CITY Request
4. Contact phone number: 904-255-7906
Contact e-mail: kmcgovern@coj.net
5. Location/address of planting project:
3850 Skycrest Dr. Jacksonville FL 32246
6. Has project information been shared with the Council Member of the district? Yes
7. Rationale for project (include information about the public benefit of the project):
Most areas of the site are without shade; trees recommended to reduce heat index on playground and adjacent park amenities.
8. Description of project:
Shade trees proposed to reduce heat index, delineate park space, and buffer for adjacent roadway.

If a citizen/organization is interested in proposing a project that they want to administer and implement, a more comprehensive application (Level 3) can be found at the following link: <http://www.coj.net/departments/public-works/tree-commission>.

Windy Hills Level 2 Tree Planting - 3831 Forest Blvd.

Description		Unit	Quantity	Unit Price*	Extended Price
<u>Quercus virginiana</u>	Live Oak 4" Cal., 14' Ht., 8' Spd., 40" B&B	EA	15	\$1,700.00	\$25,500.00
<u>Pinus palustris</u>	Longleaf Pine 4" Cal., 10' Ht., 5' Spd., 65 G or 36" B&B	EA	8	\$1,235.00	\$9,880.00
<u>Quercus shumardii</u>	Shumard Oak 4" Cal., 14' Ht., 8' Spd., 40" B&B	EA	6	\$1,700.00	\$10,200.00
<u>Acer rubrum</u>	Red Maple 4" Cal., 14' Ht., 6' Spd., 100 G or 40" B&B	EA	7	\$1,375.00	\$9,625.00
Subtotal			36		\$55,205.00

*Unit prices include 1-year warranty/maintenance of plant material per Contract CP-0459-22

Windy Hills



****To Be Completed By City of Jacksonville/Public Works Staff Only****

Level 2 - Community Organization Tree Planting Program Staff Checklist

Total number of trees to be installed 36

☒ Project is to be planted on Public Land

Total number of trees to be removed 0

☒ Project is located in Duval County

Project Title:

WINDY HILLS PARK

Activity		Complete
1	The species of trees are appropriately located.	<input checked="" type="checkbox"/>
2	The number and placement of trees is appropriate.	<input checked="" type="checkbox"/>
3	Trees being planted are approved pursuant to the 'Tree Commission Approved Tree Planting List.'	<input checked="" type="checkbox"/>
4	Shade Trees are preferred; if non-shade trees are proposed, the use is appropriated/acceptable.	<input checked="" type="checkbox"/>
5	Less than 25% of the total species of trees being planted are palms.	<input checked="" type="checkbox"/>
6	The planting will not interfere with utilities or sight line requirements.	<input checked="" type="checkbox"/>
7	The project does not include incidental landscaping. If so, the applicant must justify the reason for its inclusion.	<input checked="" type="checkbox"/>
8	Construction required? Yes <input type="checkbox"/> No <input checked="" type="checkbox"/> If yes, are costs reasonable?	<input checked="" type="checkbox"/>
9	Irrigation installed? Yes <input type="checkbox"/> No <input checked="" type="checkbox"/> If yes, are costs reasonable?	<input checked="" type="checkbox"/>
10	The cost of the species of trees selected do not outweigh the benefits of the trees.	<input checked="" type="checkbox"/>
11	Low maintenance plants are utilized.	<input checked="" type="checkbox"/>
12	Location of plant material and irrigation (if applicable) has minimum adverse impact over time on infrastructure such as walks and roads.	<input checked="" type="checkbox"/>
13	Species of trees being planted are beneficial to the City's tree canopy.	<input checked="" type="checkbox"/>
14	The project provides unique benefit to the neighborhood, Council District, or City.	<input checked="" type="checkbox"/>
15	The project has been reviewed with and meets the needs of the requesting entity.	<input checked="" type="checkbox"/>
16	The Councilmember has been notified of the project.	<input checked="" type="checkbox"/>

COMMENTS:

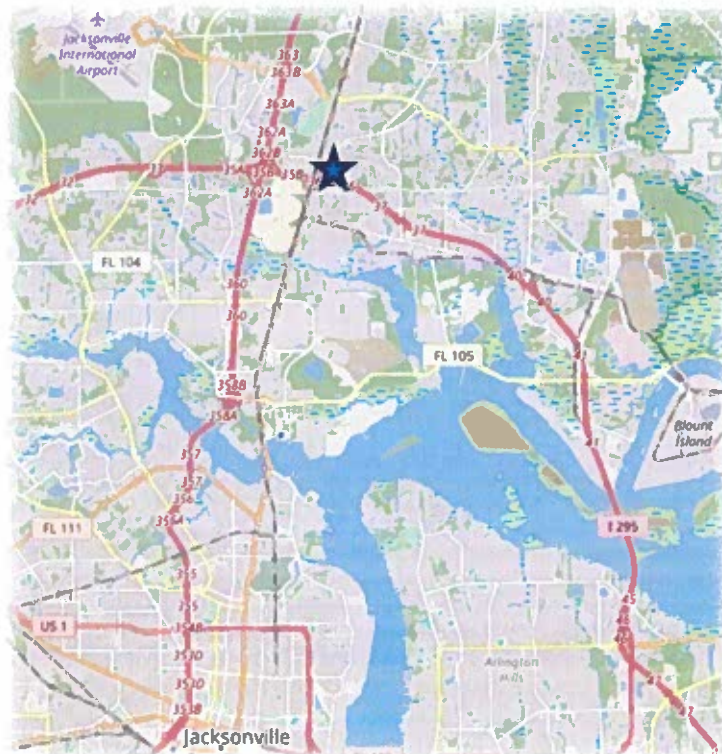


City of Jacksonville Parks – Level 2 Tree Planting

Oceanway Park

This is a proposed Level 2 Tree Planting Project designated for City of Jacksonville Oceanway Park at 12215 Sago Ave. W. The tree planting project proposed here will focus on recent areas that were under brushed of invasives and debris removal areas. There are areas included that would benefit from screening and sound barrier from the adjacent highway. Trees may be utilized in some cases to help define the perimeter boundaries of the park and to enhance and/or direct flow through the park space. Proposed trees will complement the sites both aesthetically and environmentally; smaller canopy trees were utilized in some cases due to the existing Long Leaf Pine canopy. This site also had a few losses during recent storms, which opened space for new plantings. The trees will include one-year warranty/maintenance. The projects can be viewed individually in the COJ Canopy Planner.

<https://pg-cloud.com/JacksonvilleFL/>



LEVEL 2 COMMUNITY ORGANIZATION TREE PLANTING PROGRAM

The form below provides individual citizens and organizations with the opportunity to suggest a location for a tree planting project within Duval County that proposes to use funds from the City of Jacksonville Tree Protection and Related Expenses Trust Fund. If a citizen or organization is interested in suggesting a planting location for the City to implement, then use this form.

Requirements to utilize this program:

1. The location of the proposed planting must be:
 - a. In Duval County; and
 - b. On public property, such as a road right-of-way; a local, state or national park; Duval County School Board property, etc.
2. The number of trees requested may not exceed 200.

Complete the following information below:

1. Name/title of project: Oceanway Park
2. Legal name of organization/citizen making suggestion:
COJ Maintenance Supervisor - Dale Sellers
3. Organization or citizen mailing address:
214 N. Hogan St.
4. Contact phone number: 904-2557906
Contact e-mail: kmcgovern@coj.net
5. Location/address of planting project:
12215 Sago Ave. W
6. Has project information been shared with the Council Member of the district? Yes
7. Rationale for project (include information about the public benefit of the project):
Areas cleared of invasives/underbrushed for clearance; to be maintained as defined park space.
8. Description of project:
Areas cleared of invasives/underbrushed for clearance; to be maintained as defined park space. Tree adjacent to highway provide screening and sound buffer, areas adjacent to pavilion and community center define site as park space and improves appearance

If a citizen/organization is interested in proposing a project that they want to administer and implement, a more comprehensive application (Level 3) can be found at the following link: <http://www.coj.net/departments/public-works/tree-commission>.

Oceanway Park - 12215 Sago Ave. W.

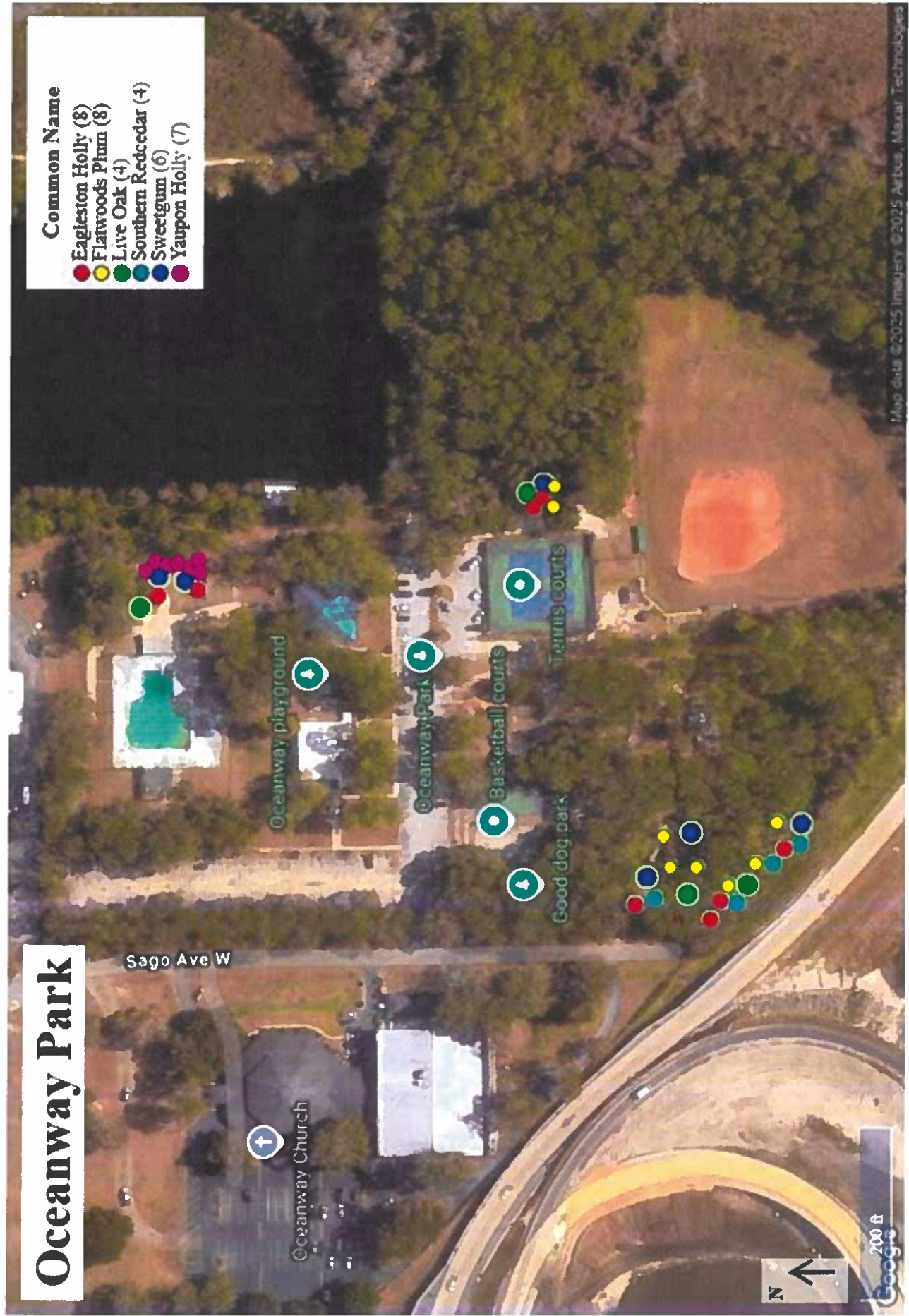
Description		Unit	Quantity	Unit Price*	Extended Price
<u>Quercus virginiana</u>	Live Oak 3" Cal., 12' Ht., 6' Spd., 65 G or 36" B&B	EA	4	\$1,100.00	\$4,400.00
<u>Juniperus silicicola</u>	Southern Redcedar 3" Cal., 10' Ht., 4' Spd., 65G or 36" B&B_Dense	EA	4	\$1,000.00	\$4,000.00
<u>Ilex attenuata</u>	Eagleston Holly 10' Ht., 3' Spd., 45G or 32" B&B Clear Trunk/Standard	EA	8	\$800.00	\$6,400.00
<u>Liquidambar styraciflua</u>	Sweet Gum 3" Cal., 12' Ht., 6' Spd., 65 G or 36" B&B	EA	6	\$1,000.00	\$6,000.00
<u>Ilex vomitoria</u>	Yaupon 3 Tks, 8' Ht., 5' Spd., 45G or 32" B&B	EA	7	\$700.00	\$4,900.00
<u>Prunus umbellata</u>	Flatwoods Plum 1.5" Cal., 5' Ht., 15G	EA	8	\$350.00	\$2,800.00
Apply 3" of soil mix; remove unsuitable soil/debris, incorporate into existing soil & rake smooth		CY	250	\$90.00	\$22,500.00
Subtotal					\$51,000.00

*Unit prices include 1-year warranty/maintenance of plant material per Contract CP-0459-22

Oceanway Park

Common Name

- Eagleston Holly (8)
- Flatwoods Plum (8)
- Live Oak (4)
- Southern Redcedar (4)
- Sweetgum (6)
- Yaupon Holly (7)



To Be Completed By City of Jacksonville/Public Works Staff Only

Level 2 - Community Organization Tree Planting Program Staff Checklist

Total number of trees to be installed 37

☒ Project is to be planted on Public Land

Total number of trees to be removed 0

☒ Project is located in Duval County

Project Title:

OCEANWAY PARK

Activity		Complete
1	The species of trees are appropriately located.	<input checked="" type="checkbox"/>
2	The number and placement of trees is appropriate.	<input checked="" type="checkbox"/>
3	Trees being planted are approved pursuant to the 'Tree Commission Approved Tree Planting List.'	<input checked="" type="checkbox"/>
4	Shade Trees are preferred; if non-shade trees are proposed, the use is appropriated/acceptable.	<input checked="" type="checkbox"/>
5	Less than 25% of the total species of trees being planted are palms.	<input checked="" type="checkbox"/>
6	The planting will not interfere with utilities or sight line requirements.	<input checked="" type="checkbox"/>
7	The project does not include incidental landscaping. If so, the applicant must justify the reason for its inclusion.	<input checked="" type="checkbox"/>
8	Construction required? Yes <input type="checkbox"/> No <input checked="" type="checkbox"/> If yes, are costs reasonable?	<input checked="" type="checkbox"/>
9	Irrigation installed? Yes <input type="checkbox"/> No <input checked="" type="checkbox"/> If yes, are costs reasonable?	<input checked="" type="checkbox"/>
10	The cost of the species of trees selected do not outweigh the benefits of the trees.	<input checked="" type="checkbox"/>
11	Low maintenance plants are utilized.	<input checked="" type="checkbox"/>
12	Location of plant material and irrigation (if applicable) has minimum adverse impact over time on infrastructure such as walks and roads.	<input checked="" type="checkbox"/>
13	Species of trees being planted are beneficial to the City's tree canopy.	<input checked="" type="checkbox"/>
14	The project provides unique benefit to the neighborhood, Council District, or City.	<input checked="" type="checkbox"/>
15	The project has been reviewed with and meets the needs of the requesting entity.	<input checked="" type="checkbox"/>
16	The Councilmember has been notified of the project.	<input checked="" type="checkbox"/>

COMMENTS:



City of Jacksonville Parks – Level 2 Tree Planting

Terrace Park

This is a proposed Level 2 Tree Planting Project designated for City of Jacksonville Terrace Park at 657 Edgewood Ave. North. The tree planting project proposed here will focus on recent improvements to include the trail and upcoming playground. Proposed trees will complement the sites both aesthetically and environmentally as well as provide shade to playground equipment and amenities. There are areas included that have been identified as areas that become inundated after heavy rains, and the water-tolerant trees proposed here may help reduce flooding. Portions of the site will benefit from heat mitigation; trees will provide shade and screening from adjacent land uses. Proposed trees are focused on native, large canopy trees to provide environmental value to the site. Trees may be utilized in some cases to help define the perimeter boundaries of the park and to enhance and/or direct flow through the park space. The trees will include one-year warranty/maintenance. The projects can be viewed individually in the COJ Canopy Planner.

<https://pg-cloud.com/jacksonvilleFL/>



LEVEL 2 COMMUNITY ORGANIZATION TREE PLANTING PROGRAM

The form below provides individual citizens and organizations with the opportunity to suggest a location for a tree planting project within Duval County that proposes to use funds from the City of Jacksonville Tree Protection and Related expenses Trust Fund. If a citizen or organization is interested in suggesting a planting location for the City to implement, then this form should be used.

Requirements to utilize this Program:

1. The location of the proposed planting must be:
 - a. In Duval County; and
 - b. On public property, such as a road right-of-way; a local, state or national park; Duval County School Board property, etc.

The following information must be provided:

1. Name/Title of Project: **Terrace Park Tree Planting**
2. Legal Name of Organization/Citizen Making Suggestion: **COJ Parks**
3. Organization or Citizen Mailing Address: **214 N. Hogan St.**
4. Contact Phone Number: 255-7906 Email: kmcgovern@coj.net
5. Location/Address of Planting Project:
 - **657 Edgewood St. North**
6. Has project information been shared with the Council Member of the district? **Yes**
7. Rationale for Project (include information about the public benefit of the project):**New Park Trail and upcoming playground would benefit from the addition of shade trees and will help delineate boundaries of park.**
8. Description of project:
Park amenities and playground are exposed; shade trees are recommended to reduce the heat index in these areas.

If a citizen/organization is interested in proposing a project that they want to administer and implement, a more comprehensive application (Level 3) can be found at the following link: <http://www.coj.net/departments/public-works/tree-commission>.

Terrace Park Level 2 Tree Planting - 657 Edgewood Ave. N.

Description					
	Unit	Quantity	Unit Price*	Extended Price	
<i>Quercus virginiana</i> Live Oak 4" Cal., 14' Ht., 8' Spd., 40" B&B	EA	6	\$1,700.00	\$10,200.00	
<i>Taxodium distichum</i> Bald Cypress 3.5" Cal., 10' Ht., 5' Spd., 65 G or 36" B&B	EA	12	\$1,235.00	\$14,820.00	
<i>Platanus acerifolia</i> Sycamore 4" Cal., 14' Ht., 8' Spd., 40" B&B	EA	4	\$1,400.00	\$5,600.00	
Subtotal		22		\$30,620.00	

*Unit prices include 1-year warranty/maintenance of plant material per Contract CP-0459-22

Terrace Park

Common Name

- American Sycamore (4)
- Bald Cypress (12)
- Live Oak (6)



****To Be Completed By City of Jacksonville/Public Works Staff Only****

Level 2 - Community Organization Tree Planting Program Staff Checklist

Total number of trees to be installed 22

☒ Project is to be planted on Public Land

Total number of trees to be removed 0

☒ Project is located in Duval County

Project Title:

TERRACE PARK

Activity		Complete
1	The species of trees are appropriately located.	<input checked="" type="checkbox"/>
2	The number and placement of trees is appropriate.	<input checked="" type="checkbox"/>
3	Trees being planted are approved pursuant to the 'Tree Commission Approved Tree Planting List.'	<input checked="" type="checkbox"/>
4	Shade Trees are preferred; if non-shade trees are proposed, the use is appropriated/acceptable.	<input checked="" type="checkbox"/>
5	Less than 25% of the total species of trees being planted are palms.	<input checked="" type="checkbox"/>
6	The planting will not interfere with utilities or sight line requirements.	<input checked="" type="checkbox"/>
7	The project does not include incidental landscaping. If so, the applicant must justify the reason for its inclusion.	<input checked="" type="checkbox"/>
8	Construction required? Yes <input checked="" type="checkbox"/> No <input checked="" type="checkbox"/> If yes, are costs reasonable?	<input checked="" type="checkbox"/>
9	Irrigation installed? Yes <input checked="" type="checkbox"/> No <input checked="" type="checkbox"/> If yes, are costs reasonable?	<input checked="" type="checkbox"/>
10	The cost of the species of trees selected do not outweigh the benefits of the trees.	<input checked="" type="checkbox"/>
11	Low maintenance plants are utilized.	<input checked="" type="checkbox"/>
12	Location of plant material and irrigation (if applicable) has minimum adverse impact over time on infrastructure such as walks and roads.	<input checked="" type="checkbox"/>
13	Species of trees being planted are beneficial to the City's tree canopy.	<input checked="" type="checkbox"/>
14	The project provides unique benefit to the neighborhood, Council District, or City.	<input checked="" type="checkbox"/>
15	The project has been reviewed with and meets the needs of the requesting entity.	<input checked="" type="checkbox"/>
16	The Councilmember has been notified of the project.	<input checked="" type="checkbox"/>

COMMENTS:

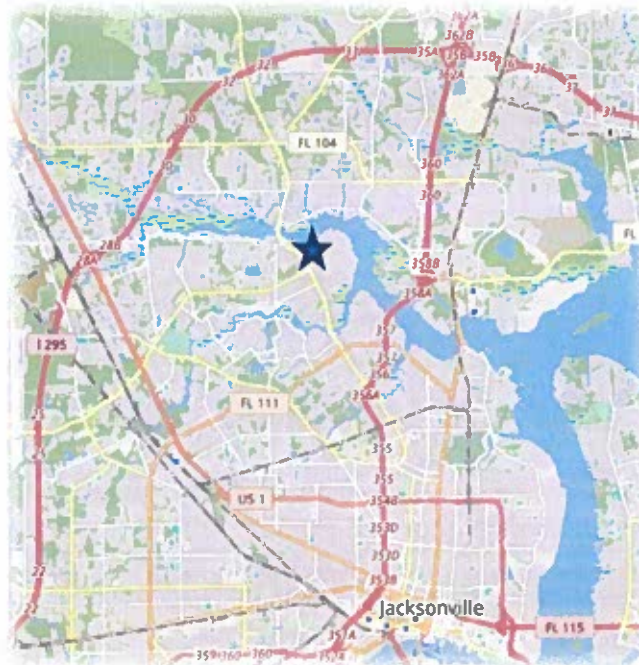


City of Jacksonville Parks – Level 2 Tree Planting

Riverview Park

This is a proposed Level 2 Tree Planting Project designated for City of Jacksonville Riverview Park at 9620 E. Water St. The tree planting project proposed here will focus on recent improvements to include a recently installed playground and trail. Portions of the site, particularly along the will benefit from heat mitigation, these trees will provide and, in some cases, provide screening from adjacent land uses. Proposed trees are focused on native, large canopy trees to provide shade and environmental value to the site. Trees may be utilized in some cases to help define the perimeter boundaries of the park and to enhance and/or direct flow through the park space. Proposed trees will complement the sites both aesthetically and environmentally as well as provide shade to playground equipment and amenities. Peach trees were requested by residents who frequent the Senior Center; more information on care and cultivars can be found here: <https://edis.ifas.ufl.edu/publication/MG374>

The projects can be viewed individually in the COJ Canopy Planner.
<https://pg-cloud.com/jacksonvilleFL/>



LEVEL 2 COMMUNITY ORGANIZATION TREE PLANTING PROGRAM

The form below provides individual citizens and organizations with the opportunity to suggest a location for a tree planting project within Duval County that proposes to use funds from the City of Jacksonville Tree Protection and Related expenses Trust Fund. If a citizen or organization is interested in suggesting a planting location for the City to implement, then this form should be used.

Requirements to utilize this Program:

1. The location of the proposed planting must be:
 - a. In Duval County; and
 - b. On public property, such as a road right-of-way; a local, state or national park; Duval County School Board property, etc.

The following information must be provided:

1. Name/Title of Project: **Riverview Park Tree Planting**
2. Legal Name of Organization/Citizen Making Suggestion: **St. Johns Riverkeeper & Residents adjacent to the park**
3. Organization or Citizen Mailing Address: **214 E. Hogan St.**
4. Contact Phone Number: 255-7906 Email: kmcgovern@coj.net
5. Location/Address of Planting Project:
9620 E. Water St.
6. Has project information been shared with the Council Member of the district? **Yes**
7. Rationale for Project (include information about the public benefit of the project):**Park Trail and newly installed playground would benefit from the addition of shade trees and will help delineate boundaries of park and provide shade/mitigate heat.**
8. Description of project:
Park amenities and playground are exposed; shade trees are recommended to reduce the heat index in these areas.

If a citizen/organization is interested in proposing a project that they want to administer and implement, a more comprehensive application (Level 3) can be found at the following link: <http://www.coj.net/departments/public-works/tree-commission>.

Riverview Park - 9620 E. Water St.

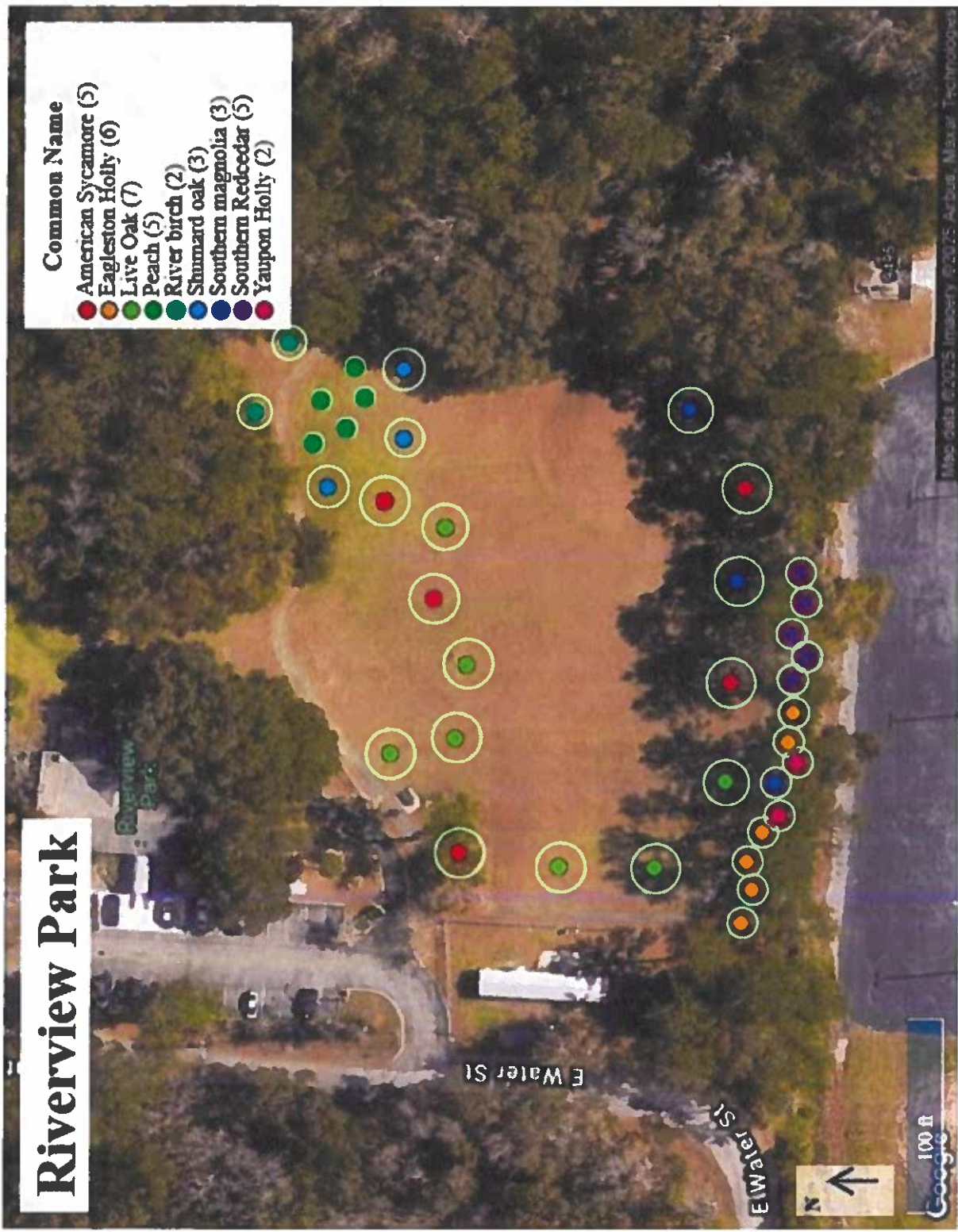
Description	Unit	Quantity	Unit Price*	Extended Price
<u>Quercus virginiana</u> Live Oak 4" Cal., 14' Ht., 6' Spd., 100 G or 40" B&B	EA	7	\$1,700.00	\$11,900.00
<u>Quercus shumardii</u> Shumard Oak 4" Cal., 14' Ht., 6' Spd., 100 G or 40" B&B	EA	3	\$1,600.00	\$4,800.00
<u>Magnolia grandiflora</u> 'DD Blanchard' 4" Cal., 14' Ht., 6' Spd., 36" B&B	EA	3	\$1,750.00	\$5,250.00
<u>Platanus occidentalis</u> Sycamore 4" Cal., 14' Ht., 8' Spd., 100 G or 40" B&B	EA	5	\$1,400.00	\$7,000.00
<u>Ilex attenuata</u> 'Eagleston' Holly 4" Cal., 14' Ht., 4' Spd., 100 G or 40" B&B	EA	6	\$1,375.00	\$8,250.00
<u>Betula nigra</u> 'Dura Heat' River Birch Min. 3 Trks., 12' Ht. 45 G or 32" B&B	EA	2	\$1,000.00	\$2,000.00
<u>Juniperus silicicola</u> Southern Redcedar 3" Cal., 10' Ht., 4' Spd., 65 G or 36" B&B Dense	EA	5	\$1,000.00	\$5,000.00
<u>Ilex vomitoria</u> Yaupon Holly Min. 3 Trks., 8' Ht., 5' Spd, 45 G or 32" B&B	EA	2	\$700.00	\$1,400.00
<u>Prunus persica</u> Peach 30G Edible Possible Cultivars (pending availability): 'Flordabest, Flordaking, Flordacrest, Tropic Beauty'	EA	5	\$775.00	\$3,875.00
Subtotal		38		\$49,475.00

*Unit prices include 1-year warranty/maintenance of plant material per Contract CP-0459-22

Peach Informationa and Cultivar Description: <https://edis.ifas.ufl.edu/publication/MG374>

Riverview Park

- Common Name**
- American Sycamore (5)
 - Eagleson Holly (6)
 - Live Oak (7)
 - Peach (5)
 - River birch (2)
 - Shumard oak (3)
 - Southern magnolia (3)
 - Southern Redcedar (5)
 - Yaupon Holly (2)



****To Be Completed By City of Jacksonville/Public Works Staff Only****

Level 2 - Community Organization Tree Planting Program Staff Checklist

Total number of trees to be installed 38

☒ Project is to be planted on Public Land

Total number of trees to be removed 0

☒ Project is located in Duval County

Project Title:

RIVERVIEW PARK

Activity		Complete
1	The species of trees are appropriately located.	<input checked="" type="checkbox"/>
2	The number and placement of trees is appropriate.	<input checked="" type="checkbox"/>
3	Trees being planted are approved pursuant to the 'Tree Commission Approved Tree Planting List.'	<input checked="" type="checkbox"/>
4	Shade Trees are preferred, if non-shade trees are proposed, the use is appropriated/acceptable.	<input checked="" type="checkbox"/>
5	Less than 25% of the total species of trees being planted are palms.	<input checked="" type="checkbox"/>
6	The planting will not interfere with utilities or sight line requirements.	<input checked="" type="checkbox"/>
7	The project does not include incidental landscaping. If so, the applicant must justify the reason for its inclusion.	<input checked="" type="checkbox"/>
8	Construction required? Yes <input type="checkbox"/> No <input checked="" type="checkbox"/> If yes, are costs reasonable?	<input checked="" type="checkbox"/>
9	Irrigation installed? Yes <input type="checkbox"/> No <input checked="" type="checkbox"/> If yes, are costs reasonable?	<input checked="" type="checkbox"/>
10	The cost of the species of trees selected do not outweigh the benefits of the trees.	<input checked="" type="checkbox"/>
11	Low maintenance plants are utilized.	<input checked="" type="checkbox"/>
12	Location of plant material and irrigation (if applicable) has minimum adverse impact over time on infrastructure such as walks and roads.	<input checked="" type="checkbox"/>
13	Species of trees being planted are beneficial to the City's tree canopy.	<input checked="" type="checkbox"/>
14	The project provides unique benefit to the neighborhood, Council District, or City.	<input checked="" type="checkbox"/>
15	The project has been reviewed with and meets the needs of the requesting entity.	<input checked="" type="checkbox"/>
16	The Councilmember has been notified of the project.	<input checked="" type="checkbox"/>

5 PEACHES (EDIBLE) REQUESTED (SEE BELOW)

COMMENTS: PEACHES (5) REQUESTED BY RESIDENTS FOR SENIOR CENTER. LOW CHILL VARIETY BASED ON U.S. TREES RECOMMENDATIONS - SEE ATTACHED LINK ON SCOPE OF WORK Pg 1.



City of Jacksonville Parks - Level 2 Tree Planting

District 10 Parks

Clanzel T. Brown Park & Community Center

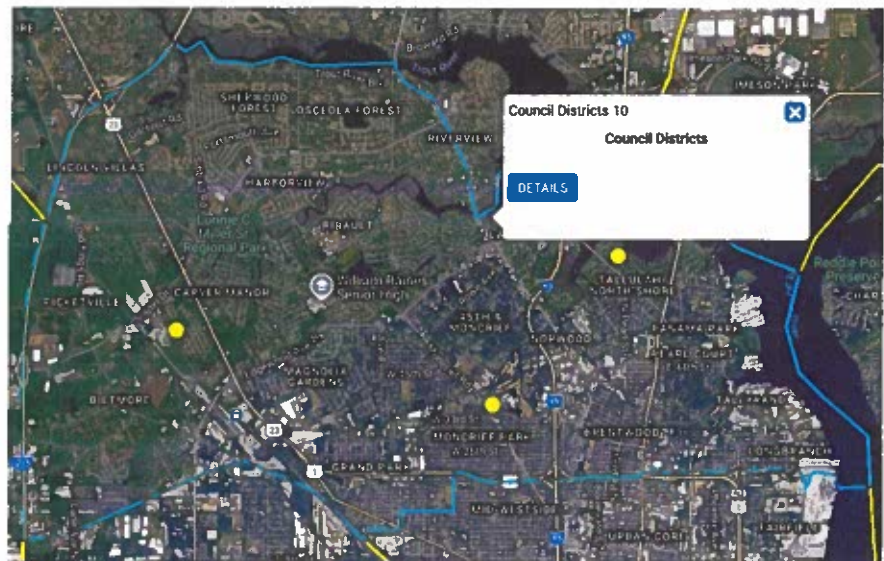
This is a proposed Level 2 Tree Planting Project designated for City of Jacksonville Clanzel T Brown Park & Community Center at 4575 Moncrief Rd. The tree planting project proposed here will focus on recent improvements to include a recently installed playground, softball field and covered basketball courts while keeping in mind space for future improvements based on the park's master plan. Proposed trees will reduce the heat index and provide screening from adjacent land uses. The focus will be on native, large canopy trees to provide shade and environmental value to the site. Trees may be utilized in some cases to help define the perimeter boundaries of the park and to enhance and/or direct flow through the park space. The trees will include one-year warranty/maintenance.

North Shore Park

This is a proposed Level 2 Tree Planting Project designated for City of Jacksonville North Shore Park at 7901 N. Pearl St. The tree planting project proposed here will focus on recent improvements to include a recently installed playground as well as an existing walking trail. Proposed trees will reduce the heat index and provide screening from adjacent land uses. The focus will be on native, large canopy trees to provide shade and environmental value to the site. The trees will include one-year warranty/maintenance.

Richardson Road Park

This is a proposed Level 2 Tree Planting Project designated for City of Jacksonville Richardson Road Park at 6602 Richardson Rd. The tree planting project proposed here will also focus on recent improvements to include a recently installed playground as well as an existing walking trail. Proposed trees will reduce the heat index, define park space and create a pleasant walking/playing environment. The trees will include one-year warranty and maintenance.



<https://pg-cloud.com/jacksonvilleFL/>

LEVEL 2 COMMUNITY ORGANIZATION TREE PLANTING PROGRAM

The form below provides individual citizens and organizations with the opportunity to suggest a location for a tree planting project within Duval County that proposes to use funds from the City of Jacksonville Tree Protection and Related Expenses Trust Fund. If a citizen or organization is interested in suggesting a planting location for the City to implement, then use this form.

Requirements to utilize this program:

1. The location of the proposed planting must be:
 - a. In Duval County; and
 - b. On public property, such as a road right-of-way; a local, state or national park; Duval County School Board property, etc.
2. The number of trees requested may not exceed 200.

Complete the following information below:

1. Name/title of project: District 10 Parks
2. Legal name of organization/citizen making suggestion:
CM Pittman
3. Organization or citizen mailing address:
City of Jacksonville/City Council
4. Contact phone number: 904-2557906
Contact e-mail: kmcgovern@coj.net
5. Location/address of planting project:
Northshore, Richardson Rd. and CT Brown Parks & Community Centers
6. Has project information been shared with the Council Member of the district? Yes
7. Rationale for project (include information about the public benefit of the project):
Increase tree canopy at parks within District 10, provide shade to new improvements or existing structures, define park areas and perimeter
8. Description of project:
Increase tree canopy at parks within District 10, provide shade to new improvements or existing structures, define park areas and perimeter

If a citizen/organization is interested in proposing a project that they want to administer and implement, a more comprehensive application (Level 3) can be found at the following link: <http://www.coj.net/departments/public-works/tree-commission>.

District 10 Level 2 Tree Planting

Northshore Park - 7901 N. Pearl St.

Description	Unit	Quantity	Unit Price*	Extended Price
<u>Quercus virginiana</u> Live Oak 4" Cal., 14' Ht., 6' Spd., 100 G or 40" B&B	EA	8	\$1,700.00	\$13,600.00
<u>Taxodium distichum</u> Bald Cypress 3.5" Cal., 12' Ht., 6' Spd., 65 G or 35" B&B	EA	10	\$1,235.00	\$12,350.00
<u>Magnolia grandiflora</u> 'DD Blanchard' 4" Cal., 14' Ht., 6' Spd., 36" B&B	EA	2	\$1,750.00	\$3,500.00
Subtotal		20		\$29,450.00

Richardson Rd. Park - 6602 Richardson Rd.

Description	Unit	Quantity	Unit Price*	Extended Price
<u>Quercus virginiana</u> Live Oak 4" Cal., 14' Ht., 6' Spd., 100 G or 40" B&B	EA	12	\$1,700.00	\$20,400.00
<u>Taxodium distichum</u> Bald Cypress 3.5" Cal., 12' Ht., 6' Spd., 65 G or 35" B&B	EA	4	\$1,235.00	\$4,940.00
<u>Acer rubrum</u> Red Maple 4" Cal., 14' Ht., 6' Spd., 100 G or 40" B&B	EA	4	\$1,375.00	\$5,500.00
<u>Nyssa sylvatica</u> Black Tupelo 3" Cal., 12' Ht., 6' Spd., 65 G or 36" B&B	EA	4	\$1,200.00	\$4,800.00
<u>Magnolia virginiana</u> Sweetbay Magnolia 2" Cal., 8-10' Ht., 30G	EA	6	\$550.00	\$3,300.00
Removals - 5-6" Caliper dead/dying pear	EA	4	\$900.00	\$3,600.00
Subtotal		30		\$42,540.00

Clanzel T. Brown Park - 4575 Moncrief Rd.

Description	Unit	Quantity	Unit Price*	Extended Price
<u>Quercus virginiana</u> Live Oak 4" Cal., 14' Ht., 6' Spd., 100 G or 40" B&B	EA	18	\$1,700.00	\$30,600.00
<u>Pinus palustris</u> Longleaf Pine 4" Cal., 14' Ht., 4' Spd., 100 G or 40" B&B	EA	7	\$1,300.00	\$9,100.00
<u>Ilex attenuata</u> 'Eagleston' Holly 4" Cal., 14' Ht., 4' Spd., 100 G or 40" B&B	EA	8	\$1,375.00	\$11,000.00
<u>Taxodium distichum</u> Bald Cypress 3.5" Cal., 12' Ht., 6' Spd., 65 G or 35" B&B	EA	5	\$1,235.00	\$6,175.00
<u>Magnolia grandiflora</u> 'DD Blanchard' 4" Cal., 14' Ht., 6' Spd., 36" B&B	EA	3	\$1,750.00	\$5,250.00
Removals - 5-6" Caliper dead/dying Ligustrum	EA	2	\$900.00	\$1,800.00
Subtotal		41		\$63,925.00
Grand Total		91		\$135,915.00

*Unit prices include 1-year warranty/maintenance of plant material per Contract CP-0459-22

Northshore Park

Common Name

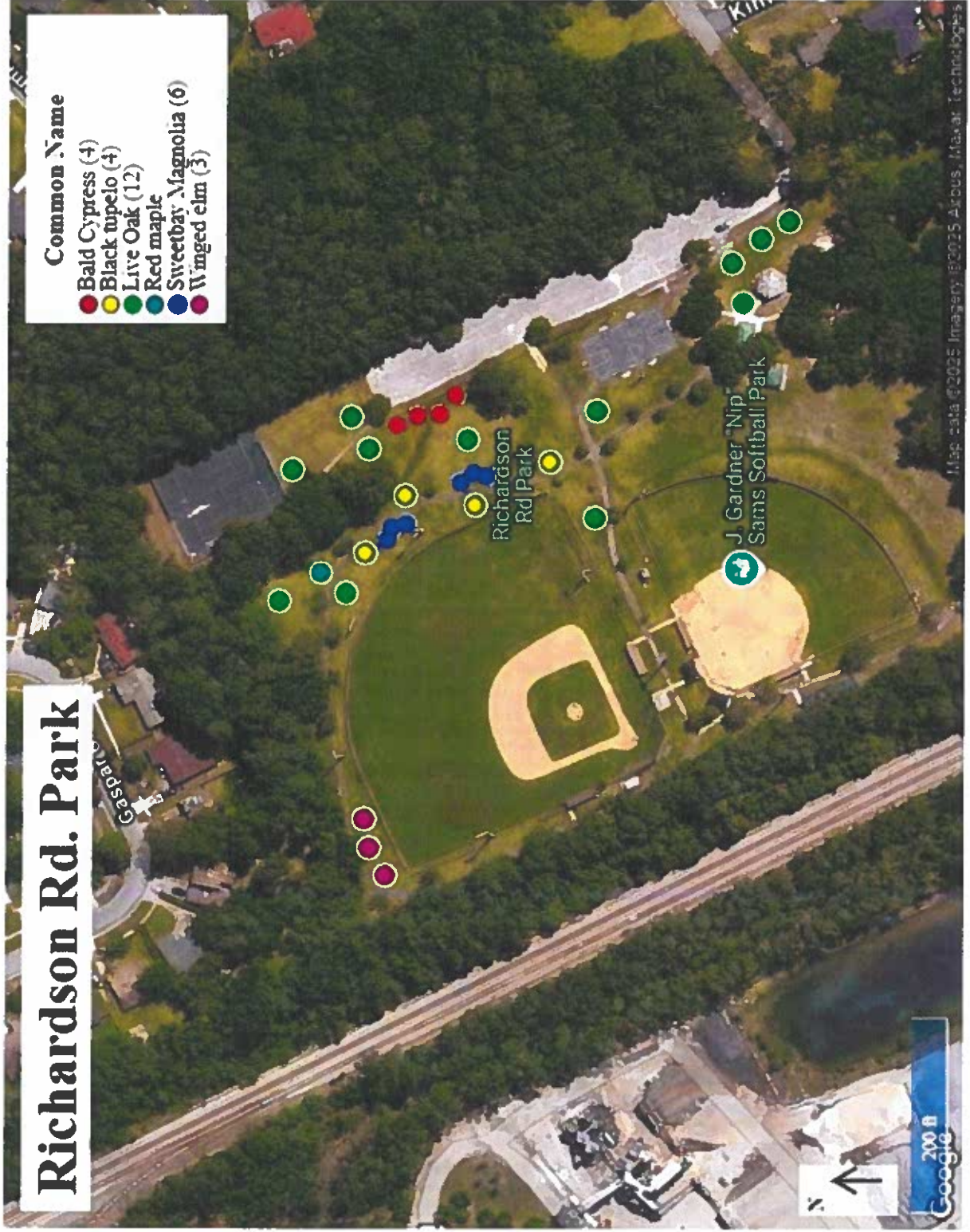
- Bald Cypress (10)
- Live Oak (8)
- Southern magnolia (2)



Richardson Rd. Park

Common Name

- Bald Cypress (4)
- Black tupelo (4)
- Live Oak (12)
- Red maple
- Sweetbay Magnolia (6)
- Winged elm (3)



Common Name

- Bald Cypress (5)
- Eagleston Holly (8)
- Live Oak (18)
- Longleaf pine (7)
- Red maple
- Southern magnolia (3)



To Be Completed By City of Jacksonville/Public Works Staff Only

Level 2 - Community Organization Tree Planting Program Staff Checklist

Total number of trees to be installed 20

☒ Project is to be planted on Public Land

Total number of trees to be removed 0

☒ Project is located in Duval County

Project Title:

NORTH SHORE PARK

Activity		Complete
1	The species of trees are appropriately located.	<input checked="" type="checkbox"/>
2	The number and placement of trees is appropriate.	<input checked="" type="checkbox"/>
3	Trees being planted are approved pursuant to the 'Tree Commission Approved Tree Planting List.'	<input checked="" type="checkbox"/>
4	Shade Trees are preferred; if non-shade trees are proposed, the use is appropriated/acceptable.	<input checked="" type="checkbox"/>
5	Less than 25% of the total species of trees being planted are palms.	<input checked="" type="checkbox"/>
6	The planting will not interfere with utilities or sight line requirements.	<input checked="" type="checkbox"/>
7	The project does not include incidental landscaping. If so, the applicant must justify the reason for its inclusion.	<input checked="" type="checkbox"/>
8	Construction required? Yes <input type="checkbox"/> No <input checked="" type="checkbox"/> If yes, are costs reasonable?	<input checked="" type="checkbox"/>
9	Irrigation installed? Yes <input type="checkbox"/> No <input checked="" type="checkbox"/> If yes, are costs reasonable?	<input checked="" type="checkbox"/>
10	The cost of the species of trees selected do not outweigh the benefits of the trees.	<input checked="" type="checkbox"/>
11	Low maintenance plants are utilized.	<input checked="" type="checkbox"/>
12	Location of plant material and irrigation (if applicable) has minimum adverse impact over time on infrastructure such as walks and roads.	<input checked="" type="checkbox"/>
13	Species of trees being planted are beneficial to the City's tree canopy.	<input checked="" type="checkbox"/>
14	The project provides unique benefit to the neighborhood, Council District, or City.	<input checked="" type="checkbox"/>
15	The project has been reviewed with and meets the needs of the requesting entity.	<input checked="" type="checkbox"/>
16	The Councilmember has been notified of the project.	<input checked="" type="checkbox"/>

COMMENTS:

****To Be Completed By City of Jacksonville/Public Works Staff Only****

Level 2 - Community Organization Tree Planting Program Staff Checklist

Total number of trees to be installed 30

☒ Project is to be planted on Public Land

Total number of trees to be removed 4

Project Title:

RICHARDSON RD. PARK

☒ Project is located in Duval County

Activity		Complete
1	The species of trees are appropriately located.	<input checked="" type="checkbox"/>
2	The number and placement of trees is appropriate.	<input checked="" type="checkbox"/>
3	Trees being planted are approved pursuant to the 'Tree Commission Approved Tree Planting List.'	<input checked="" type="checkbox"/>
4	Shade Trees are preferred; if non-shade trees are proposed, the use is appropriated/acceptable.	<input checked="" type="checkbox"/>
5	Less than 25% of the total species of trees being planted are palms.	<input checked="" type="checkbox"/>
6	The planting will not interfere with utilities or sight line requirements.	<input checked="" type="checkbox"/>
7	The project does not include incidental landscaping. If so, the applicant must justify the reason for its inclusion.	<input checked="" type="checkbox"/>
8	Construction required? Yes <input type="checkbox"/> No <input checked="" type="checkbox"/> If yes, are costs reasonable?	<input checked="" type="checkbox"/>
9	Irrigation installed? Yes <input type="checkbox"/> No <input checked="" type="checkbox"/> If yes, are costs reasonable?	<input checked="" type="checkbox"/>
10	The cost of the species of trees selected do not outweigh the benefits of the trees.	<input checked="" type="checkbox"/>
11	Low maintenance plants are utilized.	<input checked="" type="checkbox"/>
12	Location of plant material and irrigation (if applicable) has minimum adverse impact over time on infrastructure such as walks and roads.	<input checked="" type="checkbox"/>
13	Species of trees being planted are beneficial to the City's tree canopy.	<input checked="" type="checkbox"/>
14	The project provides unique benefit to the neighborhood, Council District, or City.	<input checked="" type="checkbox"/>
15	The project has been reviewed with and meets the needs of the requesting entity.	<input checked="" type="checkbox"/>
16	The Councilmember has been notified of the project.	<input checked="" type="checkbox"/>

COMMENTS:

****To Be Completed By City of Jacksonville/Public Works Staff Only****

Level 2 - Community Organization Tree Planting Program Staff Checklist

Total number of trees to be installed 41

☒ Project is to be planted on Public Land

Total number of trees to be removed 2

☒ Project is located in Duval County

Project Title:

CLANZEL T. BROWN

Activity		Complete
1	The species of trees are appropriately located.	<input checked="" type="checkbox"/>
2	The number and placement of trees is appropriate.	<input checked="" type="checkbox"/>
3	Trees being planted are approved pursuant to the 'Tree Commission Approved Tree Planting List.'	<input checked="" type="checkbox"/>
4	Shade Trees are preferred; if non-shade trees are proposed, the use is appropriated/acceptable.	<input checked="" type="checkbox"/>
5	Less than 25% of the total species of trees being planted are palms.	<input checked="" type="checkbox"/>
6	The planting will not interfere with utilities or sight line requirements.	<input checked="" type="checkbox"/>
7	The project does not include incidental landscaping. If so, the applicant must justify the reason for its inclusion.	<input checked="" type="checkbox"/>
8	Construction required? Yes <input type="checkbox"/> No <input checked="" type="checkbox"/> If yes, are costs reasonable?	<input checked="" type="checkbox"/>
9	Irrigation installed? Yes <input type="checkbox"/> No <input checked="" type="checkbox"/> If yes, are costs reasonable?	<input checked="" type="checkbox"/>
10	The cost of the species of trees selected do not outweigh the benefits of the trees.	<input checked="" type="checkbox"/>
11	Low maintenance plants are utilized.	<input checked="" type="checkbox"/>
12	Location of plant material and irrigation (if applicable) has minimum adverse impact over time on infrastructure such as walks and roads.	<input checked="" type="checkbox"/>
13	Species of trees being planted are beneficial to the City's tree canopy.	<input checked="" type="checkbox"/>
14	The project provides unique benefit to the neighborhood, Council District, or City.	<input checked="" type="checkbox"/>
15	The project has been reviewed with and meets the needs of the requesting entity.	<input checked="" type="checkbox"/>
16	The Councilmember has been notified of the project.	<input checked="" type="checkbox"/>

COMMENTS:

City of Jacksonville

Tree Commission

Financial Highlights

February 28, 2025

1. Combined Revenues for Fiscal YTD are \$2.78M compared to \$2.28M Feb-24. An increase of \$501.79K year-on-year.
2. Combined Expenses for Fiscal YTD are \$1.70M compared to \$2.77M on Feb-24. A decrease of \$1.073M year-on-year.
3. Combined Revenues for Feb-25 were \$631K compared to \$852.2K for Feb-24, a decrease of \$221.25K. Meanwhile, expenses were \$546.6K and \$305.6K on Feb-25 and Feb-24, respectively.
4. Total unallocated funds were \$23.13M for Feb-25.

City of Jacksonville
Tree Commission
Financials Combined
Balance Sheet
February 28, 2025

Cash	36,894,366.89
-------------	---------------

Accounts Payable	187,616.91
Other Adjustments	-

Fund Balance	
Beginning Fund Balance	35,621,970.65
YTD Gain\Loss	1,084,779.33
Adjusted Fund Balance	<u>36,706,749.98</u>

Available Balance Calculation

Cash	36,894,366.89	Bank Funds
Less:		
AP	187,616.91	
Other Adjustments	-	
Funds Available	9,343,068.90	Appropriated Funds by City Council
Encumbrances (Open POs)	4,234,960.60	Appropriated and Allocated
Sub-Total Adjustments	<u>13,765,646.41</u>	

Unappropriated/Unallocated	<u>23,128,720.48</u>	Funds 15304 & 15305
-----------------------------------	----------------------	---------------------

BJP Unallocated Funds	<u>-</u>	Better Jacksonville Plan * Funds Available Moved to County-Wide Tree Prog
------------------------------	----------	--

* Better Jacksonville funds were appropriated to
Activity 378 - County Wide Tree Prog Right of Way
Not in Ordinance Fund.

City of Jacksonville
Tree Commission
Financials Combined
Statement of Activity
February 28, 2025

	Actuals		Budget
	28-Feb	YTD	
Revenues			
Ordinance appropriation			530,506.00
Tree Mitigation Funds - Article 25	46,690.00	298,078.00	
Investment Pool Earnings	120,802.26	516,311.55	
Contributions From Private Sources	461,728.00	1,939,627.00	
Misc Sales and Charges	-	-	
Contribution-Loss Deductible	1,765.80	25,237.99	
Transfer from fund balance	-	-	
Total	630,986.06	2,779,254.54	530,506.00
Expenses			
Summarized expenses	546,566.66	1,694,475.21 *	12,818,473.40
Net	84,419.40	1,084,779.33	(12,287,967.40)

* Budget is comprised of current year budget and prior year carry forward.

City of Jacksonville
Tree Commission
Ordinance - 15304 - Tree Protection & Related Expenditures
Balance Sheet
February 28, 2025

<u>Equity in Pooled Cash</u>	26,270,939.68
<u>Accounts Payable</u>	187,616.91
<u>Other Adjustments</u>	-
<u>Fund Balance</u>	
Beginning Fund Balance	25,306,786.95
YTD Gain\Loss	776,535.82
Adjusted Fund Balance	<u>26,083,322.77</u>
 <u>Available Balance Calculation</u>	
Cash	26,270,939.68
Less:	
AP	187,616.91
Other Adjustments	-
Funds Available(Budget)	7,004,803.31
Encumbrances (Open POs)	<u>4,177,680.62</u>
Sub-Total Adjustments	<u>11,370,100.84</u>
 Unappropriated/Unallocated	 <u><u>14,900,838.84</u></u>

City of Jacksonville
Tree Commission
Ordinance - 15304 - Tree Protection & Related Expenditures
Statement of Activity
February 28, 2025

	<u>28-Feb</u>	<u>YTD</u>	<u>Budget</u>
Revenues			
Ordinance appropriation			530,506.00
Tree Mitigation Funds - Article 25	9,571.00	31,346.00	
Investment Pool Earnings	86,452.20	370,345.61	
Contributions From Private Sources	461,728.00	1,939,627.00	
Misc Sales and Charges	-	-	
Contribution-Loss Deductible	1,765.80	25,237.99	
Total Revenue	<u>559,517.00</u>	<u>2,366,556.60</u>	<u>530,506.00</u>
Expenses			
Expenses	546,566.66	1,590,020.78	12,818,473.40
Net	<u>12,950.34</u>	<u>776,535.82</u>	<u>(12,287,967.40)</u>

City of Jacksonville
Tree Commission
Charter - 15305- Tree Mitigation & Related Expenditures
Balance Sheet
February 28, 2025

<u>Equity in Pooled Cash</u>	10,623,427.21
-------------------------------------	---------------

<u>Accounts Payable</u>	-
--------------------------------	---

<u>Fund Balance</u>	
Beginning Fund Balance 10/1/24	10,315,183.70
YTD Gain\Loss	<u>308,243.51</u>
Adjusted Fund Balance	<u>10,623,427.21</u>

Available Balance Calculation	
Cash	10,623,427.21
Less:	
AP	-
Funds Available	2,338,265.59
Encumbrances (Open POs)	<u>57,279.98</u>
Sub-total	<u>2,395,545.57</u>

Unappropriated/Unallocated	<u><u>8,227,881.64</u></u>
-----------------------------------	----------------------------

City of Jacksonville
Tree Commission
Charter - 15305- Tree Mitigation & Related Expenditures
Statement of Activity
February 28, 2025

	<u>Actuals</u>		<u>Budget</u>
	<u>28-Feb</u>	<u>YTD</u>	
Revenues			-
Tree Mitigation Funds - Article 25	37,119.00	266,732.00	
Investment Pool Earnings	34,350.06	145,965.94	
	<u>71,469.06</u>	<u>412,697.94</u>	
Expenses			
Trust Fund Authorized Expenditures	-	104,454.43	-
Net	<u>71,469.06</u>	<u>308,243.51</u>	<u>-</u>

Month of: As of 2/28/25

Ledger COJ PL - Modified Accrual

Fund 15304 Tree Protection & Related

Account	Description	Beginning Balance (USD)	Debits (USD)	Credits (USD)	Ending Balance (USD)
104001	Equity in Pooled Cash Account	28,405,516.94	432,905.60	88,894.84	28,749,527.70
104201	Cash - JP Accounts Payable	-133,413.00	0.00	0.00	-133,413.00
104206	Cash - JP General Deposit	-1,323,448.40	2,462,186.82	2,870,252.04	-1,731,513.62
104299	Bank Clearing	-527,070.43	2,832,930.04	2,500,559.90	-194,700.29
104998	Zero Invoice Clearing	-2,077.50	0.00	0.00	-2,077.50
104999	Cash Clearing	-416,883.61	0.00	0.00	-416,883.61
201101	Vouchers Payable Account	-693,649.07	5,006,377.02	4,500,344.86	-187,616.91
216101	Accrued Payroll Payable	-2,187.98	2,187.98	0.00	0.00
284101	Fund Balance - Unassigned Account	-25,306,786.95	0.00	0.00	-25,306,786.95
					-776,535.82
					-26,083,322.77
343750	Tree Mitigation Funds - Article 25	0.00	0.00	31,346.00	-31,346.00
361101	Investment Pool Earnings	0.00	0.00	370,345.61	-370,345.61
366020	Contributions From Private Sources	0.00	0.00	1,939,627.00	-1,939,627.00
369400	Contribution-Loss Deductible	0.00	0.00	25,237.99	-25,237.99
512010	Permanent and Probationary Salaries	0.00	30,560.02	1,931.73	28,628.29
514010	Salaries Overtime	0.00	679.00	0.00	679.00
521020	Medicare Tax	0.00	403.93	24.45	379.48
522070	Disability Trust Fund-ER	0.00	91.71	5.79	85.92
522130	GEPP Defined Contribution DC-ER	0.00	3,575.52	226.01	3,349.51
523010	Group Dental Plan	0.00	75.00	0.00	75.00
523030	Group Life Insurance	0.00	42.22	0.00	42.22
523040	Group Hospitalization Insurance	0.00	5,867.50	0.00	5,867.50
524001	City Employees Worker's Compensation	0.00	1,359.60	0.00	1,359.60
545020	General Liability Insurance	0.00	131.65	0.00	131.65
549006	Trust Fund Authorized Expenditures	0.00	3,462,546.22	1,913,263.61	1,549,282.61
549032	Clothing, Clean, Shoe Transfer Allow	0.00	140.00	0.00	140.00
Total for Fund 15304		0.00	14,242,059.83	14,242,059.83	-776,535.82

Month of: As of 2/28/25

Ledger

Fund 15305 Tree Mitigation &

Account	Description	Beginning Balance (USD)	Debits (USD)	Credits (USD)	Ending Balance (USD)
104001	Equity in Pooled Cash Account	8,515,013.70	179,413.94	0.00	8,694,427.64
104201	Cash - JP Accounts Payable	-2,295.00	0.00	0.00	-2,295.00
104206	Cash - JP General Deposit	1,802,465.00	266,732.00	137,902.43	1,931,294.57
104299	Bank Clearing	0.00	104,454.43	104,454.43	0.00
201101	Vouchers Payable Account	0.00	115,472.95	115,472.95	0.00
284101	Fund Balance - Unassigned Account	-10,315,183.70	0.00	0.00	-10,315,183.70
					-308,243.51
					-10,623,427.21
343750	Tree Mitigation Funds - Article 25	0.00	0.00	266,732.00	-266,732.00
361101	Investment Pool Earnings	0.00	0.00	145,965.94	-145,965.94
549006	Trust Fund Authorized Expenditures	0.00	109,963.69	5,509.26	104,454.43
Total for		0.00	776,037.01	776,037.01	-308,243.51

End of Report

As of 2/28/2025

Review Budgetary Control Balances

Done

* Control Budget

COJ Detail Budget

Saved Search

Search

Amount Type

Year to date

* Budget Period

Feb-25

Funds Available

All amounts

Currency

USD

* Fund

15304

* Center

All Center Values

* Account

500000

* Project

All Project Values

* Activity

All Activity Values

* Interfund

00000

* Future

0000000

Search

Reset

Save

Budget Balances

View

Detach

Wrap

Transfer Budget

0

	Fund	Center	Account	Project	Activity	Interfund	Future	Year to Date Period	Initial Budget	Budget Adjustments	Total Budget	Commitments	Obligations	Expenditures	Funds Available Amount
	15304	151004	549006	000000	00000378	00000	0000000	Feb-25	0.00	973,450.99	973,450.99	0.00	331,035.76	321,203.93	321,211.30
	15304	151004	549006	000000	00000541	00000	0000000	Feb-25	0.00	10,283.00	10,283.00	0.00	0.00	0.00	10,283.00
	15304	151004	549006	000000	00001315	00000	0000000	Feb-25	0.00	5,108,991.78	5,108,991.78	0.00	2,249,462.16	871,039.93	1,988,489.69
	15304	151004	549006	000000	00001316	00000	0000000	Feb-25	0.00	140,238.62	140,238.62	0.00	0.00	0.00	140,238.62
	15304	151004	549006	000000	00001623	00000	0000000	Feb-25	0.00	3,677,648.60	3,677,648.60	0.00	1,316,974.36	0.00	2,360,674.24
	15304	151004	549512	000000	00000982	00000	0000000	Feb-25	0.00	363.81	363.81	0.00	0.00	0.00	363.81
	15304	151004	549521	000000	00000982	00000	0000000	Feb-25	0.00	330.42	330.42	0.00	0.00	0.00	330.42
	15304	151004	549533	000000	00000982	00000	0000000	Feb-25	0.00	0.50	0.50	0.00	0.00	0.00	0.50
	15304	151004	582001	000000	00000982	00000	0000000	Feb-25	0.00	1,600.00	1,600.00	0.00	0.00	0.00	1,600.00
	15304	154006	512010	000000	00000000	00000	0000000	Feb-25	70,315.00	-2,499.41	67,815.59	0.00	0.00	28,628.29	39,187.30
	15304	154006	514010	000000	00000000	00000	0000000	Feb-25	0.00	-3,655.79	-3,655.79	0.00	0.00	679.00	-4,334.79
	15304	154006	518001	000000	00000000	00000	0000000	Feb-25	0.00	0.00	0.00	0.00	0.00	0.00	0.00
	Total								573,834.00	12,244,639.40	12,818,473.40	0.00	4,177,680.62	1,635,989.47	7,004,803.31

		2/28/2025	1/31/2025	MoM Variance
Total Budget		12,818,473.40	12,818,473.40	-
Encumbrance		4,177,680.62	4,725,448.77	(547,768.15)
Available Funds		7,004,803.31	7,141,334.38	(136,531.07)

As of 2/28/2025

Review Budgetary Control Balances

Done

* Control Budget	COJ Detail Budget	▼
------------------	-------------------	---

Saved Search

Search

Amount Type Year to date

* Budget Period Feb-25 ▼

Funds Available All amounts

Currency USD

* Fund	15305	▼
--------	-------	---

* Center	All Center Values	▼
----------	-------------------	---

* Account	500000	▼
-----------	--------	---

* Project All Project Values ▼

* Activity All Activity Values ▼


* Interfund	00000	▼
-------------	-------	---

* Future	00000000	▼
----------	----------	---

Search Reset Save

Budget Balances

View Detach Wrap Transfer Budget 0

															
	Fund	Center	Account	Project	Activity	Interfund	Future	Year to Date Period	Initial Budget	Budget Adjustments	Total Budget	Commitments	Obligations	Expenditures	Funds Available Amount
	15305	151004	549006	000000	00000378	000000	00000000	Feb-25	0.00	1,000,000.00	1,000,000.00	0.00	32,543.69	5,509.26	961,947.05
	15305	151004	549006	000000	00001315	000000	00000000	Feb-25	0.00	1,500,000.00	1,500,000.00	0.00	24,736.29	98,945.17	1,376,318.54
	Total								0.00	2,500,000.00	2,500,000.00	0.00	57,279.98	104,454.43	2,338,265.59

	<u>2/28/2025</u>	<u>1/31/2025</u>	<u>MoM Variance</u>
Total Budget	2,500,000.00	2,500,000.00	-
Encumbrance	57,279.98	26,113.61	31,166.37
Available Funds	2,338,265.59	2,369,431.96	(31,166.37)

Done

Saved Search

Amount Type

Year to date ▾

* Budget Period

Feb-25 ▾

Funds Available

All amounts ▾

Currency

USD

* Activity	All Activity Values	▼
* Interfund	00000	▼
* Future	0000000	▼

Search Reset Save

View Detach Wrap Transfer Budget 0

	<u>2/28/2025</u>	<u>1/31/2025</u>	<u>MoM Variance</u>
Total Budget	1,537,783.84	1,537,783.84	-
Encumbrance	1,082,963.61	896,938.07	186,025.54
Available Funds	-	340,454.97	(340,454.97)

City of Jacksonville
Tree Commission
Activity/Project Status as of 2 /28/2025

		Budget	Obligation	Expenditures	Funds Available
		2/28/2025	2/28/2025	2/28/2025	2/28/2025
151004-PWOD Tree Mitigation & Related Expenses - Conservation and Resource Manag	00000378-County-Wide Tree Prog-Remove - Replace	973,450.99	331,035.76	321,203.93	321,211.30
151004-PWOD Tree Mitigation & Related Expenses - Conservation and Resource Manag	00000541-Hammond Blvd Project	10,283.00	-	-	10,283.00
151004-PWOD Tree Mitigation & Related Expenses - Conservation and Resource Manag	00000982-Tree Protection & Related Expenses	2,294.73	-	-	2,294.73
151004-PWOD Tree Mitigation & Related Expenses - Conservation and Resource Manag	00001315-Level 2 Tree Planting Program	5,108,991.78	2,249,462.16	871,039.93	1,988,489.69
151004-PWOD Tree Mitigation & Related Expenses - Conservation and Resource Manag	00001316-Moncrief Rd Beautification Project	140,238.62	-	-	140,238.62
151004-PWOD Tree Mitigation & Related Expenses - Conservation and Resource Manag	00001623-Level 3 Tree Planting Program	3,677,648.60	1,316,974.36	-	2,360,674.24
		9,912,907.72	3,897,472.28	1,192,243.86	4,823,191.58
154006-PWML Tree Maintenance - Other Physical Environment	00000000-No Activity	550,152.24	189,849.30	319,863.55	40,439.39
	All Activity Values	550,152.24	189,849.30	319,863.55	40,439.39
154007-PWML 630-City Tree Planting Prog - Other Physical Environment	00000000-No Activity	2,355,413.44	90,359.04	123,882.06	2,141,172.34
	All Activity Values	2,355,413.44	90,359.04	123,882.06	2,141,172.34
15305 - Charter					
151004-PWOD Tree Mitigation & Related Expenses - Conservation and Resource Manag	00000378-County-Wide Tree Prog-Remove - Replace	1,000,000.00	32,543.69	5,509.26	961,947.05
	00001315-Level 2 Tree Planting Program	1,500,000.00	24,736.29	98,945.17	1,376,318.54
	All Activity Values	2,500,000.00	57,279.98	104,454.43	2,338,265.59
	Total 15304 & 15305	15,318,473.40	4,234,960.60	1,740,443.90	9,343,068.90
City - JTA Transprotation Project - Fund 35101					
151004-PWOD Tree Mitigation & Related Expenses - Conservation and Resource Manag	00000378-County-Wide Tree Prog-Remove - Replace	1,537,783.84	1,082,963.61	454,820.23	-
	Adjusted Totals	16,856,257.24	5,317,924.21	2,195,264.13	9,343,068.90

jaxtreemitigation.coj.net

☆Verify it's you

HomeTree MitigationTree CommissionAbout

Welcome Guest (Visitor)Log in



TREE MITIGATION
CITY OF JACKSONVILLE





TREE REMOVAL PERMIT INFORMATION
Click here to search detailed information on Site Clearing and Tree Removal Permits. In reviewing tree removal information on a specific permit, for "B" permits click on the Spec 2 tab; for "L" permits click on the Tree Mitigation tab.



TREE FUND CITY PLANTING PROJECTS
Click here to search detailed information about City Tree Fund Planting Projects.



AVAILABLE FOR APPROPRIATION

15F (Ordinance):	\$15,338,406.15
15N (Charter):	\$8,270,551.64
Total:	\$23,608,957.79



FILE AN ISSUE
Click here to report site clearing or tree removal without a permit, or to request tree maintenance on public property. In the CARE System, select "Tree Remove or Landscape Violation" from the dropdown.



Disclaimer: The AVAILABLE FOR APPROPRIATION information shown on this page is updated nightly from the City's financial records, but does not include any pending appropriations, or other financial transactions of the funds which have not been completed.

If you experience difficulty viewing or accessing the documents provided on this site, or navigating this application's table features, using any assistive technology please contact the Disabled Services Division at 904-630-4940 or 904-630-4933 (TTY) to request an accommodation.

© 2025 - Official City of Jacksonville and Duval County Government Website, All Rights Reserved.

Version: 1.0.0.6

ere to search



META +4.09%

9:42 AM 3/12/2025

AVAILABLE FOR APPROPRIATION (a)

15304 (15F)	Ordinance	\$ 15,341,978.15
15305 (15N)	Charter	\$ 8,271,231.64
		\$ 23,613,209.79

<u>FY24 Revenues:</u>	<u>15304 (15F)</u>	<u>15305 (15N)</u>
October	\$ 426,299.91	\$ 48,368.70
November	\$ 60,714.00	\$ 30,685.00
December	\$ 222,544.56	\$ 65,191.49
January	\$ 162,331.63	\$ 57,325.88
February	\$ 1,272,241.65	\$ 39,706.27
March	\$ 355,939.11	\$ 142,970.84
April	\$ 437,057.38	\$ 114,816.07
May	\$ 498,969.05	\$ 116,474.24
June	\$ 277,145.24	\$ 62,006.36
July	\$ 575,491.91	\$ 124,329.19
August	\$ 473,477.12	\$ 259,575.22
September	\$ 859,003.34	\$ 128,993.97

FY25 Revenues:

October	\$ 478,603.00	\$ 89,080.00
November	\$ 574,360.12	\$ 71,839.60
December	\$ 496,845.39	\$ 114,108.17
January	\$ 257,231.09	\$ 66,201.11
February	\$ 559,517.00	\$ 71,469.06

FY24 Expenses:

October	\$	119,529.98	\$	-
November	\$	392,524.81	\$	-
December	\$	1,210,324.57	\$	-
January	\$	568,415.76	\$	-
February	\$	389,344.50	\$	-
March	\$	502,833.85	\$	-
April	\$	404,643.01	\$	-
May	\$	428,409.97	\$	-
June	\$	820,717.65	\$	-
July	\$	389,709.43	\$	-
August	\$	360,522.52	\$	-
September	\$	360,843.20	\$	-

FY25 Expenses:

October	\$ 30,938.21	\$ -
November	\$ 279,657.16	\$ 98,945.17
December	\$ 357,285.21	\$ -
January	\$ 283,809.67	\$ 5,509.26
February	\$ 684,299.22	\$ -

	<u>15304 (15F)</u>	<u>15305 (15N)</u>
Funds Available (b)	\$ 7,004,505.06	\$ 2,338,265.59
Obligations (c)	\$ 4,044,407.42	\$ 57,279.98

THE BIG 4

<u>Title</u>	<u>Obligations</u>	<u>Funds Available</u>
Level 2 Tree Planting Program - Fund 15304 (d)	\$ 2,183,656.64	\$ 1,988,489.69
Level 2 Tree Planting Program - Fund 15305 (d)	\$ 24,736.29	\$ 1,376,318.54
Level 3 Tree Planting Program - Fund 15304 (d)	\$ 1,316,974.36	\$ 2,360,674.24
Remove/Replace - Fund 15304 (e)	\$ 331,035.76	\$ 321,211.30
Remove/Replace - Fund 35101 (e)	\$ 885,276.81	\$ -
Remove/Replace - Fund 15305 (e)	\$ 32,543.69	\$ 961,947.05
630-CITY Tree Planting Program - Fund 15304 (e)	\$ 90,359.04	\$ 2,141,172.34

(a) jaxtreemitigation.coj.net

(b) total appropriated, but unobligated, funds

(c) purchase order(s) have been issued for these funds

(d) Tree Commission may make recommendations for these appropriations

(e) Public Works utilizes these appropriations

Prepared 3/17/25 LD

The City of Jacksonville has two separate laws that provide protection for certain trees and require mitigation for damage or removal of certain trees caused by the process of land development. Mitigation is required either through planting or replanting of a calculated amount of mitigation trees or through making a specified payment into the Tree Protection and Related Expenses Trust Fund codified by Sec. 111.760, Ordinance Code. These laws are Article 25 of the Charter of the City of Jacksonville and Chapter 656, Part 12, Subparts A & B of the Ordinance Code. Each provision has specific criteria for what is characterized as a "protected tree" and thus would require replacing through the development process of a site, or if a replacement is not made, how the "mitigation fee" is calculated for removal of trees without replacement. The mitigation fee that is paid by developers who are unable to replace the trees destroyed during construction, as required by both provisions, is placed in the Tree Protection and Related Expenses Trust Fund. Moreover, funds received from application of the Charter are held in Fund 15305 and funds received from application of the Ordinance Code are held in the Fund 15304.

ACTIVE CITY OF JACKSONVILLE LEVEL 2 TREE PLANTING PROJECTS

ATTACHMENT F

Visit <https://pg-cloud.com/JacksonvilleFL/> for City of Jacksonville Tree Project Maps

Visit jaxtreemitigation.coj.net - Tree Fund City Projects for links to legislation and planting details

Requesting Entity	Project Scope	Tree Commission Approval Date	Status	Allocated Amount	Contract/Warranty
Saint Johns Bluff Road	Trees along Median. 189 trees	Jul-22	Installation Complete	\$388,238.50	Liberty 2/yr
Collins Road	Trees along median. 183 trees	Sep-22	Installation Complete	\$338,265.00	Liberty 2/yr
Airport Center Drive E	Trees along median. 76 trees	Nov-22	Installation Complete	\$153,643.00	Liberty 2/yr
College Street Parking Islands	Trees in Parking Islands, 4 trees.	Nov-22	Installation Complete	\$13,019.00	Liberty 2/yr
Gold Star Family Memorial Highway Phase 2	Trees within retention ponds and right of way. 1218 trees	Dec-22	Installation Complete	\$2,300,000.00	To Bid 2/yr
Fort Caroline Road Pond	Trees within retention pond. 34 trees	Feb-23	Installation Complete	\$61,479.00	Liberty 2/yr
Kernan Blvd N	Trees within Right of way and Median- 276 trees	Feb-23	Installation Complete	\$591,059.00	Liberty 2/yr
Price Park	Trees within Right of way. 13 trees	Apr-23	Installation Complete	\$27,216.00	Liberty 2/yr
Amelia View Phase 2	Trees within Right of Way. 34 trees	Apr-23	Installation Complete	\$62,370.00	Liberty 2/yr
GatorBowl	Trees in Median. 8 trees	Jul-23	Installation Complete	\$41,185.00	Liberty/2yr
7th Street East	Trees in right of way (42 trees)	Aug-23	Installation Complete	\$41,185.00	Liberty/2yr
District 7 and 10 Corridors	Trees in right of way (39 trees)	Sep-23	Installation Complete	\$75,451.50	Liberty/2yr
Hodges Blvd Level 2	Trees in Median (59 trees)	Oct-23	Installation Complete	\$137,667.34	Liberty/2yr
McGirts Creek Restoration Level 2	In Preserve (12,000 saplings)	Jan-24	Scheduling	\$182,750.00	Greenway/no warranty
Lift Ev'ry Voice and Sing Park Level 2	In Park (90 trees)	Nov-24	Installation Complete	\$233,335.00	Greenway/1yr
Northbank Riverwalk Phase 2	36 trees	Jan-24	Installation Complete	\$76,642.50	Greenway/1yr
Parks Senior and Community Centers	81 trees	Jan-24	Installation Complete	\$172,450.00	Greenway/1yr
Southern S-Line Enhancement	140 trees along S-line	Jan-24	Installation Complete	\$131,600.00	Greenway/1yr
Various Parks	98 Trees in Parks	Apr-24	Installation Complete	\$136,800.00	Greenway/1yr
Alden Road	41 Trees along ROW	May-24	Installation Complete	\$76,282.56	Liberty 2/yr
Gate Parkway	49 Trees in median and ROW	Jul-24	Installation Complete	\$123,681.46	Liberty 2/yr
JTA Bus Stops Phase 1	11 trees in ROW	Jul-24	Installation Complete	\$34,533.86	Liberty 2/yr
Merrill Road	4 trees in median	Nov-24	Installation Complete	\$7,998.33	Liberty 2/yr
Murray Hill	14 trees in ROW	Nov-24	Installation Complete	\$33,119.53	Liberty 2/yr
Gonzales Park	within park boundaries 50 trees	Nov-24	Installation Complete	\$106,397.74	Liberty 2/yr
Glynlea Park	within park boundaries 64 trees	Nov-24	Ongoing	\$81,000.00	Greenway/ 1yr

ACTIVE CITY OF JACKSONVILLE LEVEL 2 TREE PLANTING PROJECTS

ATTACHMENT F

Visit <https://pg-cloud.com/JacksonvilleFL/> for City of Jacksonville Tree Project Maps

Visit jaxtreemitigation.coj.net - Tree Fund City Projects for links to legislation and planting details

Requesting Entity	Project Scope	Tree Commission Approval Date	Status	Allocated Amount	Contract/Warranty
Julington Durbin Preserve	within park boundaries 41 trees	Nov-24	Ongoing	\$52,950.00	Greenway/ 1yr
Backridge Park	within park boundaries 34 trees	Nov-24	Installation Complete	\$51,575.00	Greenway/ 1yr
Walter Anderson Park	within park boundaries 7 trees	Nov-24	Ongoing	\$10,700.00	Greenway/ 1yr
Genovar Park	within park boundaries 42 trees	Nov-24	Ongoing	\$56,900.00	Greenway/ 1yr
Greenland Park	within park boundaries 59 trees	Nov-24	Ongoing	\$86,475.00	Greenway/ 1yr
Touchton Rd Park	within park boundaries 63 trees	Nov-24	Installation Complete	\$85,400.00	Greenway/ 1yr
Maxville Park	within park and city property boundaries 94 trees	Nov-24	Installation Complete	\$219,325.00	Greenway/ 1yr
Black Island Hammock Park	within park boundaries 60 trees	Nov-24	Installation Complete	\$94,150.00	Greenway/ 1yr
Palmetto Leaves	within park boundaries 103 trees	Dec-24	Ongoing	\$152,650.00	Greenway/1yr
Atlantic Blvd	Median 20 trees	Dec-24	Installation Complete	\$45,379.20	Liberty 2/yr
Jacksonville Zoo Level 2	On public property on Zoo grounds 64 trees	Feb-25	MBRC	\$141,164.00	Liberty 2/yr
Amelica View Phase 3	on City Right of way's in neighborhood 22 trees	Feb-25	MBRC	\$44,630.60	Liberty 2/yr
Five Points Level 2	On City Right of way 15 trees	Feb-25	MBRC	\$35,226.79	Liberty 2/yr

Completed CITY OF JACKSONVILLE LEVEL 2 TREE PLANTING PROJECTS

ATTACHMENT B

Visit <https://pg-cloud.com/JacksonvilleFL/> for City of Jacksonville Tree Project Maps
Visit jaxtreemitigation.coj.net - Tree Fund City Projects for links to legislation and planting details

Requesting Entity	Project Scope	Tree Commission Approval Date	Status	Approp.	Obligated	Contract/Warranty
Executive Director, Tree Hill Nature Center	22 trees requested in Tree Hill amphitheater parking area; site plan complete; no removals required; ready for review pending cost estimate per new countywide tree planting contract.	May-19	Complete	\$21,472.80	\$21,472.80	Liberty 3/mos
Sheffield Elementary School PTA President	10 Trees requested to provide shade for existing play area/field at Sheffield Elementary School; site visit complete - pending design and review.	May-19	Complete	\$20,414.48	\$20,414.48	Davey -1/yr
San Marco Preservation Society and Greenscape, San Marco Tree Planting	102 Trees requested in city right of ways within District 5, includes removal of damaged/diseased trees; site evaluation scheduled	Jun-19	Complete	\$247,749.52	\$247,749.52	Davey -1/yr
Kensington Association HOA Director	54 trees requested within Kensington Lakes city right of ways along Kensington Gardens Blvd. and Kensington Lakes Dr to replace trees lost due to storm damage/disease; may include removals. Planting Plan pending.	Aug-19	Complete	\$124,202.62	\$124,202.62	Davey -1/yr
S-Line Biodiversity Corridor Tree Planting	Installation of 25 trees throughout the S-Line Trail Biodiversity Corridor. This will offer additional tree canopy and shade to the trail.	Aug-19	Complete	\$30,949.40	\$30,949.40	Liberty 3/mos
City Cemetery - citizen request	18 Trees in right of ways on Ionia St. and Jessie St.	Dec-19	Complete	\$41,350.50	\$41,350.50	Liberty 2/yr
Baymeadows East Association Tree Planting	119 Trees in right of ways and medians on Baymeadows East and Fort Family Regional Park	Dec-19	Complete	\$284,900.07	\$284,900.07	Davey -1/yr
Cathedral District Tree Planting	50+ trees requested as Cathedral District (CD7) tree planting, may include removal of damaged/diseased trees. City right of way tree plantings within general proximity but not limited to State St to Catherine St. to Main St. to Adams St.; site evaluation scheduled	Jan-20	Complete	\$120,371.14	\$120,371.14	Liberty 2/yr
Yates Building - Cultural Council of Greater Jacksonville	8 Trees to be installed around renovated fountain at building entrance	Jan-20	Complete	\$38,312.00	\$38,312.00	Liberty 2/yr
Ed Austin Park Tree Planting/Resident request	115 Trees in right of ways around and within Willowbranch Park	Jun-20	Complete	\$214,822.00	\$214,822.00	Liberty 2/yr
Neptune Beach/Residential requests - City of Neptune	Trees within residential Right of Ways - 47 trees	Jul-20	Complete	\$55,490.00	\$55,490.00	Liberty 3/mos
Nathan Krestul Park - Friends of Krestul Park	Trees within Park - 34 trees	Jul-20	Complete	\$63,423.00	\$63,423.00	Liberty 2/yr

Completed CITY OF JACKSONVILLE LEVEL 2 TREE PLANTING PROJECTS

ATTACHMENT B

Visit <https://pg-cloud.com/JacksonvilleFL/> for City of Jacksonville Tree Project Maps
Visit jastreemitigation.coj.net - Tree Fund City Projects for links to legislation and planting details

Requesting Entity	Project Scope	Tree Commission Approval Date	Status	Approp.	Obligated	Contract/Warranty
Alexandria Oaks Park/SMPS and Bolles School request	Trees within Park - 15 trees	Jul-20	Complete	\$28,593.00	\$28,593.00	Liberty 2/yr
Huntington Forest Park/Resident request to CM	Trees along Park Right of Way - Buffer - 15 trees	Jul-20	Complete	\$28,026.00	\$28,026.00	Liberty 2/yr
Canopy Place Tree Planting/resident request	Installation of 40 trees in city right of ways and medians to provide additional tree canopy, sound buffer and screening.	Oct-20	Complete	\$117,483.97	\$117,483.97	Davey -1/yr
Sunrise Ridge/resident request	Installation of 40 tree in city right of ways to increase tree canopy as well screening and buffer from adjacent highway.	Oct-20	Complete	\$107,316.52	\$107,316.52	Davey -1/yr
Jacksonville Beach Golf Park/Jax Beach	Installation of 156 trees in city golf course park to increase tree canopy, create screening, and attract wildlife.	Nov-20	Complete	\$147,562.80	\$147,562.80	Liberty 3/mos
Freedom Park/CM & Parks	Trees within newly established park (irrigated) - 38 trees	Dec-20	Complete	\$38,548.00	\$38,548.00	Liberty 3/mos
Blue Cypress Park Restoration/Parks	Trees within park - field restoration - 157 trees	Mar-21	Complete	\$187,154.40	\$187,154.40	Liberty 1/yr
Atlantic Beach/City of Atlantic Beach Phase 2	Trees within Atlantic Beach residential Right of Ways and Parks - 133 trees	May-21	Complete	\$164,404.80	\$164,404.80	Liberty 3/mos
Cobblestone Homeowners Association/residential requests/HOA	Installation of 105 trees in city right of ways and medians to provide additional tree canopy, sound buffer and screening.	Jun-20	Complete	\$192,922.00	\$192,922.00	Liberty 2/yr

March 2025 Tree Fund Ask

For March 19th, 2025
Tree Commission



History of Previous Appropriations

- Prior to the “Pools of Money” appropriations were done on a project basis, where each project would go to Council for appropriation.

Date of Appropriation	Amount Appropriated	Project Name	Legislative Bill #
April 2018	\$85,366.23	King Street Tree Planting	2018-159-E
May 2018	\$31,232.60	Avondale Tree Planting	2018-273-E
August 2018	\$32,202.87	Patton Road Tree Planting	2018-190-E
August 2018	\$62,080.49	Patton Road Tree Planting-Charter	2018-190-E

History of Previous Appropriations

November 2018 630-City “pot of money” and remove and replace “pot of money” were created
February 2019 Level 2 “pot of money” was created.
May 2020 Level 3 “pot of money” was created.

Date of Appropriation	Amount Appropriated	Project Name	Legislative Bill #
January 2019	\$166,045	Mandarin Road Tree Planting-Charter	2018-791-E
January 2019	\$278,872	SPRINGFIELD PRESERVATION TREE PLANTING	2018-792-E
February 2019	\$781,748	RAP RELEAF TREE PLANTING	2019-44-E
August 2019	\$263,836.95	Yancy Park, Pritchard Road, Moncrief Dinsmore Road	2019-521-E
March 2020	\$72,298	Sulzbacher Village Level 3	2020-114-E
March 2020	\$105,587	Huguenot Park Level 3	2020-113-E

History of Previous Appropriations

Date of Appropriation	Amount Appropriated	Pool of Money Appropriated to	Legislative Bill #
November 2018	\$300,000	Remove and Replace-Ordinance	2018-775-E
November 2018	\$200,000	630-City-Ordinance	2018-775-E
February 2019	\$1,000,000	Level 2-Ordinance	2019-89-E
August 2019	\$1,600,000	630-City-Ordinance	2019-0469-E
November 2019	\$2,000,000	Remove and Replace-Ordinance	2019-0745-E
January 2020	\$2,000,000	630-City Ordinance	2019-886-E
January 2020	\$2,000,000	Level 2-Ordinance	2019-880-E
May 2020	\$1,000,000	Level 3- Ordinance	2020-213-E
November 2020	\$2,000,000	630-City-Ordinance	2020-616-E
January 2021	\$2,000,000	Level 2-Ordinance	2020-732-E

History of Previous Appropriations

Date of Appropriation	Amount Appropriated	Pool of Money Appropriated to	Legislative Bill #
April 2021	\$2,000,000	Remove and Replace-Ordinance	2021-144-21
August 2021	\$2,000,000	Level 2-Ordinance	2019-455-E
★ June 2022	\$8,000,000	Level 2-Ordinance	2022-0415-E
December 2022	\$4,000,000	Remove and Replace-Ordinance	2022-764-E
December 2022	\$2,000,000	630-City-Ordinance	2022-764-E
December 2022	\$1,000,000	Level 3- Ordinance	2022-764-E
June 2024	\$1,000,000	Remove and Replace-Charter	2024-438-E
June 2024	\$1,717,826	Remove and Replace-BJP	2024-438-E
June 2024	\$1,500,000	Level 2- Charter	2024-438-E
June 2024	\$2,000,000	Level 3-Ordinance	2024-438-E

★ - First appropriation after Council Member Salem asked for larger appropriations and less legislation visits.

Current Levels of Funding

POOL OF MONEY	CURRENT BALANCE
LEVEL 2- ORDINANCE	\$1,988,489.69
LEVEL 2- CHARTER	\$1,376,318.54
LEVEL 3- ORDINANCE	\$2,360,674.24
REMOVE AND REPLACE- ORDINANCE	\$321,211.30
REMOVE AND REPLACE-CHARTER	\$961,947.05
REMOVE AND REPLACE-BJP	\$0
630-CITY- ORDINANCE	\$2,115,236.02

Ordinance	\$14,532,585.278
Charter	\$8,172,081.58

Staff Recommendation for Council Appropriation

\$5,400,000 for Remove and Replace Ordinance-

Past two years we spent- ~5,400,000

\$4,800,000 for Level 2 Ordinance-

Past two years we spent- ~\$4,800,000

Jacksonville Tree Commission

Minutes, CORRECTED

Wednesday March 19, 2025, - 9:30 AM

Via Zoom Platform & In Person

[Recording of Meeting can be obtained by sending request to
Joe Rainey [jrainey@coj.net]

For approval April 16, 2025

Commissioners:

Curtis L. Hart, Chair (Council Appointee; 2021-0033-A)
Susan Fraser (Council Appointee; 2022-0063-A)
Vacant (Mayor Appointee; 2023-0696-A)
William Burke (Mayor Appointee; 2023-0695-A)
Alden Howell (Council Appointee; 2024-0388-A)
Chris Miller, Council Liaison
Nina Sickler, Director of Public Works

Advisors:

Jonathan Colburn - Urban Forestry Manager
Justin Gearhart - City Arborist
Shannon MacGillis - Office of General Counsel
Jose Regueiro - Accounting

Staff: Joe Rainey

1. Call to Order

Conducted by Chair

2. Roll Call and Verification of Quorum

Conducted by Chair, Commissioners present:

Curtis Hart, Chair
Susan Fraser
William Burke
Alden Howell
Chris Miller
Nina Sickler

Quorum present (4, in person): yes

3. Call for Public Speakers (online & card):

- a) **Lisa Grubba (Public Speaker) Greenscape** Informed the Tree Commission to "The Great Tree Give Away and Paper Recycle Day" event on January 18th 2025 went well distributing trees faster than any previous year. New community education programs for urban forestry being developed.

- b) **John Nooney - (Public Speaker)** Describes his concerns with trespassing police citation on Jacksonville University property (seeking pardon), and river access. Continues to be troubled regarding use of his 2.5 acre lot by Pottsbury Creek, and adjacent FEMA house still undemolished.

Action Items:

1. Prior Meeting Minutes.

Issue: The minutes from February 19, 2025, APPROVED

Motion: Approve, as presented.

Moved by: Susan Fraser

Second: William Burke

Vote: February minutes approved, unanimous.

2. Level 2 Project Proposal(s):

- i. Neptune Beach Phase 1 - Justin Gearhart

Motion: Approve, as presented.

Moved by: Nina Sickler

Second: Chris Miller

Vote: approved as presented, unanimous

[NOTE: Item taken out of order, see below:

"Financial Report: Jose Regueiro: item 3 section a".]

- ii. Pearl Street - Justin Gearhart

Motion: Approve, PENDING CORRECT CHECKLIST.

Moved by: William Burke

Second: Chris Miller

Discussion- Fraser: questions regarding Japanese Blueberries.

Vote: approved (pending corrected check list), unanimous

- iii. Windy Hills - Kathleen McGovern

Motion: Approve, as presented.

Moved by: Alden Howell

Second: William Burke

Discussion: Concerns over multiple pricing re 1 vs 2 year pricing along with multiple vender quotes. Pricing is currently based on active contracts.

Justin Gearhart/ Mike Zaffroni: related to overall contracts and contract terms, benefit of unit pricing and umbrella contract to speed up individual projects; warranty contracts 90d, 1yr, 2yr; City has ability to bid out any particular project, example: Gold Star. The best choice for warranty may be site specific.

Hart: Expressed the importance of and desire for competitive pricing.

Marsha Ray Wellington: Has concerns the park did not have trees included in original project plans and would like to have the additional trees expedited for upcoming use and events; time is of essence due to upcoming events at park.

Vote: approved as presented, unanimous

Request for action/follow-up- Add to next agenda discuss pricing options for future projects to make bid/quote competitive.

iv. Oceanway Park - Kathleen McGovern

Motion: Approve, as presented.

Moved by: Nina Sickler

Second: William Burke

Vote: approved as presented, unanimous

v. Terrace Park - Kathleen McGovern

Motion: Approve, as presented.

Moved by: William Burke

Second: Nina Sickler

Vote: approved as presented, unanimous

vi. Riverview - Kathleen McGovern

Motion: Approve, without Peach trees until a maintenance plan has been presented funded by Parks.

Moved by: Nina Sickler

Second: William Burke

Discussion- question regarding maintenance regarding peach-bearing trees; **Fraser/Sickler** issue of Parks department plan for maintenance. **Marsha Ray Wellington-** the community would present a maintenance plan

Vote: approved, as moved- without Peach trees until a maintenance plan has been presented funded by Parks, **unanimous**

vii. District 10 - Kathleen McGovern

Motion: Approve, as presented.

Moved by: William Burke

Second: Nina Sickler

Discussion- cost regarding remove & replace; pear trees died; grind stumps.

Vote: approved as presented, **unanimous**

3. Financial Report: Jose Regueiro [taken out of order]:

Noted: Item 3, a discussed in section 2 under action items

a. Combined revenues: Combined Revenues for Fiscal YTD are \$2.78M compared to \$2.28M Feb-24. An increase of \$501.79K year-on-year. Combined Expenses for Fiscal YTD are \$1.70M compared to \$2.77M on Feb-24. A decrease of \$1.073M year-on-year. Combined Revenues for Feb-25 were \$631K compared to \$852.2K for Feb-24, a decrease of \$221.25K. Meanwhile, expenses were \$546.6K and \$305.6K on Feb-25 and Feb-24, respectively. Total unallocated funds were \$23.13M for Feb-25.

Discussion: How money is accounted for and/or transferred between accounts specifically for the year 2022 financials. Details on how funds are collected and applied and set asides for affordable housing, additional arborist and landscape architect among other programs in relation to tree funds and new legislation.

[NOTED: Parks update out of order; Item 5, below.]

b. Fund Status: Justin Gearhart: Total funds not appropriated \$32.02M. Remaining in the three pools in public works \$1.28M. For 630-City \$2.11M. For level 2 \$3.36M and Level 3 \$2.36M.

Total obligated funds \$3.58M as of March, 2025

(See Details on PGs 25-47 of January Agenda)

4. Status of Level 2: Justin Gerhart, Kathleen McGovern:

- Northwest Parks-Complete/off warranty
- Hollywood-Fletcher- Complete/off warranty
- Jarboe Park- Complete/off warranty
- Touchton Park- on warranty
- Backridge Park- on warranty
- Black Island Hammock- on warranty
- Maxville Park- on warranty
- Atlantic Blvd- on warranty

No Motion/ No Vote.

5. Parks Department Project Update:

[NOTE: Parks update provided out of order after Item 3,a]

- Glynlea Park is 80% Complete
- Greenland Park is 80% Complete
- McGirts Restoration is 10% In Progress with consultant portion of work
- Scheduling: Julington Durbin, Genovar, Walter Anderson

No Motion/ No Vote.

(See Details on PGs 48-51 of February Agenda)

6. UFMP Update: Valerie Feinberg: UFMP has provided the Davie Consulting contract and scope of services to the General Council for distribution to Commission Members. Outreach has begun, starting good conversations at CPAC meetings. Northwest showed great interest in new trees and UFMP observed the need for trees in the northwest CPAC. States Tree Commission has an opportunity to expand tree planting through community engagement and education as resources allow. Materials and details of

presentations are being made available to be added to the taskforce resource library.

DISCUSSION:

Sickler: asked when will the next and final deliverables or dates expected be available?

Feinberg/ Fraser/ discussion regarding deliverables; expressed importance for a logical place where relevant information can be easily found and accessible.

Nancy Powell: would like larger participation, including larger invitation for participation; concerned there is no *strategic* plan other than to spend tree fund money.

Sickler: has questions regarding UFMP process and timing.

Motion- Fraser: Have Davie Consultants return and present dates, and details of project to provide scope and timeframe for tree commission and set expectations. As last meeting did not provide coherent insight.

Feinberg [point of information] the number of meetings are set by contract and consultants are not local or on site; but will try to work something out.

Vote: approved as moved, unanimous

7. New Business

A. Money For Appropriations: Gearhart: Overview of past projects and allocations regarding appropriations. Discussion of funds. As of 2022 two-year appropriations had been requested by at the time council member Salem for "larger appropriations and lower legislation." Details and timeline on how funds were allocated and distributed over time through the Tree Commission. Funding requests with explanations put forward to Commission.

Request for action/follow-up- Gearhart to produce specific documentation and workable condensed numbers to discuss for next meeting. Along with breakdown of Level 1 (Remove and Replace) expenditures to correlate with produced documents.

No motion; no vote.

B. Taskforce Update- Fraser: next meeting will be an open forum discussion, with contributing invested parties in attendance. Open invite. Date: March 20

C. Mike Zaffroni (Liberty Landscape Supply): 630-City tree planting programs; commending the program to plant trees in the right-of-ways; should be better promoted. Tampa as comparison, only 4 types of trees offered.

Justin Gearhart: explained that the volume of request for tree plantings on 630-City ebb & flow.

Hart: asked about how to better promote the program.

Powell: asked about 100-tree challenge [Justin Gearhart provided background and plan for 100-tree challenge]

(See Details on PGs 52-60 of January Agenda)

END OF MEETING 11:43AM

ATTACHMENT 1