

Jacksonville Tree Commission

Wednesday May 21, 2025, 9:30 AM
Ed Ball Building, 10th Floor, Conference Room 5
and Zoom Webinar

Commissioners: Curtis Hart, Chair
Susan Fraser
Chris Miller
Nina Sickler
William Burke, Vice Chair
Alden Howell

Advisors: Jonathan Colburn
Shannon MacGillis
Jose Regueiro
Justin Gearhart

Staff: Joe Rainey

AGENDA

Order of Agenda is Subject to Change

- 1. Call to Order - Chair**
- 2. Roll Call and Verification of Quorum – Chair**
- 3. Submittal of Speaker's Cards – Chair**
 - a) A raised hand icon will be acknowledged by the Chair.
 - b) For those attending in person, paper speakers' cards will be available.
- 4. Public Comment:**
- 5. Action Items:**
 - a) Approval of Minutes: March 19, 2025 and April 28, 2025 Meetings
 - b) Level 3 Project Proposal: NONE
 - c) Level 2 Project Proposal
 - i. Beachwood Blvd. – Justin Gearhart
 - ii. Warrington Park – Kathleen McGovern
 - iii. ACPS Dog Park – Kathleen McGovern

v. Riverfront Park – Kathleen McGovern

d) Additions to Approved Species List – Justin Gearhart

6. Reports:

- a) Financial Report for Ordinance Tree Fund (15304), Charter Tree Fund (15305) and BJP (Attachment D) – Jose Regueiro
- b) Fund Status of 630-CITY, Remove & Replace and Level 2 Programs (Attachment E) – Justin Gearhart
- c) Status of Level 2 Tree Projects (Attachment F) – Justin Gearhart
- d) Parks Department Project Update – Kathleen McGovern/Jill Enz
- e) UFMP Update/Tree Commission Urban Forest Management Plan Workshop --Valerie Feinberg
 - i. May 16th workshop with Tree Commission
- f) Task Force Update: Request for extension of time for report

7. New Business:

- i. 2025-0102-E, an ordinance by Council Member J. Carlucci, signed into law on April 18, 2025.
- ii. Mowing in City Parks

8. Old Business:

- 9. Adjournment** – Next meeting June 18th, 2025, 9:30am-11:30am as a Hybrid/Webinar meeting in Ed Ball Building, 10th Floor, Public Works Office, conference room 5.

Jacksonville Tree Commission

Minutes

Wednesday March 19, 2025, - 9:30 AM

Via Zoom Platform & In Person

[Recording of Meeting can be obtained by sending request to
Joe Rainey [jrainey@coj.net]

For approval April 16, 2025

Commissioners:

Curtis L. Hart, Chair (Council Appointee; 2021-0033-A)
Susan Fraser (Council Appointee; 2022-0063-A)
Vacant (Mayor Appointee; 2023-0696-A)
William Burke (Mayor Appointee; 2023-0695-A)
Alden Howell (Council Appointee; 2024-0388-A)
Chris Miller, Council Liaison
Nina Sickler, Director of Public Works

Advisors:

Jonathan Colburn - Urban Forestry Manager
Justin Gearhart - City Arborist
Shannon MacGillis - Office of General Counsel
Jose Regueiro - Accounting

Staff: Joe Rainey

1. Call to Order

Conducted by Chair

2. Roll Call and Verification of Quorum

Conducted by Chair, Commissioners present:

Curtis Hart, Chair
Susan Fraser
William Burke
Alden Howell
Chris Miller
Nina Sickler

Quorum present (4, in person): yes

3. Call for Public Speakers (online & card):

- a) **Lisa Grubba (Public Speaker) Greenscape** Informed the Tree Commission to "The Great Tree Give Away and Paper Recycle Day" event on January 18th 2025 went well distributing trees faster than any previous year. New community education programs for urban forestry being developed.

- b) **John Nooney - (Public Speaker)** Describes his concerns with trespassing police citation on Jacksonville University property (seeking pardon), and river access. Continues to be troubled regarding use of his 2.5 acre lot by Pottsbury Creek, and adjacent FEMA house still undemolished.

Action Items:

1. Prior Meeting Minutes.

Issue: The minutes from February 19, 2025, APPROVED

Motion: Approve, as presented.

Moved by: Susan Fraser

Second: William Burke

Vote: February minutes approved, unanimous.

2. Level 2 Project Proposal(s):

- i. **Neptune Beach Phase 1** - Justin Gearhart

Motion: Approve, as presented.

Moved by: Nina Sickler

Second: Chris Miller

Vote: approved as presented, unanimous

[NOTE: Item taken out of order, see below:

"Financial Report: Jose Regueiro: item 3 section a".]

- ii. **Pearl Street** - Justin Gearhart

Motion: Approve, PENDING CORRECT CHECKLIST.

Moved by: William Burke

Second: Chris Miller

Discussion- Fraser: questions regarding Japanese Blueberries.

Vote: approved (pending corrected check list), unanimous

- iii. **Windy Hills** - Kathleen McGovern

Motion: Approve, as presented.

Moved by: Alden Howell

Second: William Burke

Discussion: Concerns over multiple pricing re 1 vs 2 year pricing along with multiple vender quotes. Pricing is currently based on active contracts.

Justin Gearhart/ Mike Zaffroni: related to overall contracts and contract terms, benefit of unit pricing and umbrella contract to speed up individual projects; warranty contracts 90d, 1yr, 2yr; City has ability to bid out any particular project, example: Gold Star. The best choice for warranty may be site specific.

Hart: expressed desire for competitive pricing.

Marsha Ray Wellington: Has concerns the park did not have trees included in original project plans and would like to have the additional trees expedited for upcoming use and events; time is of essence due to upcoming events at park.

Vote: approved as presented, unanimous

Request for action/follow-up- Add to next agenda discuss pricing options for future projects to make bid/quote competitive.

iv. Oceanway Park - Kathleen McGovern

Motion: Approve, as presented.

Moved by: Nina Sickler

Second: William Burke

Vote: approved as presented, unanimous

v. Terrace Park - Kathleen McGovern

Motion: Approve, as presented.

Moved by: William Burke

Second: Nina Sickler

Vote: approved as presented, unanimous

vi. Riverview - Kathleen McGovern

Motion: Approve, without Peach trees until a maintenance plan has been presented funded by Parks.

Moved by: Nina Sickler

Second: William Burke

Discussion- question regarding maintenance regarding peach-bearing trees; **Fraser/Sickler** issue of Parks department plan for maintenance. **Marsha Ray Wellington-** the community would present a maintenance plan

Vote: approved, as moved- without Peach trees until a maintenance plan has been presented funded by Parks, **unanimous**

vii. District 10 - Kathleen McGovern

Motion: Approve, as presented.

Moved by: William Burke

Second: Nina Sickler

Discussion- cost regarding remove & replace; pear trees died; grind stumps.

Vote: approved as presented, **unanimous**

3. Financial Report: Jose Regueiro [taken out of order]:

Noted: Item 3,a discussed in section 2 under action items

a. Combined revenues: Combined Revenues for Fiscal YTD are +on-year. Combined Expenses for Fiscal YTD are \$1.70M compared to \$2.77M on Feb-24. A decrease of \$1 .073M year-on-year. Combined Revenues for Feb-25 were \$631K compared to \$852.2K for Feb-24, a decrease of \$221 .25K. Meanwhile, expenses were \$546.6K and \$305.6K on Feb-25 and Feb-24, respectively. Total unallocated funds were \$23.13M for Feb-25.

Discussion: How money is accounted for and/or transferred between accounts specifically for the year 2022 financials. Details on how funds are collected and applied and set asides for affordable housing, additional arborist and landscape architect among other programs in relation to tree funds and new legislation.

[NOTED: Parks update out of order; Item 5, below.]

b. Fund Status: Justin Gearhart: Total funds not appropriated \$32.02M. Remaining in the three pools in public works \$1.28M. For 630-City \$2.11M. For level 2 \$3.36M and Level 3 \$2.36M.

Total obligated funds \$3.58M as of March, 2025

(See Details on PGs 25-47 of January Agenda)

4. Status of Level 2: Justin Gerhart, Kathleen McGovern:

- Northwest Parks-Complete/off warranty
- Hollywood-Fletcher- Complete/off warranty
- Jarboe Park- Complete/off warranty
- Touchton Park- on warranty
- Backridge Park- on warranty
- Black Island Hammock- on warranty
- Maxville Park- on warranty
- Atlantic Blvd- on warranty

No Motion/ No Vote.

5. Parks Department Project Update:

[NOTE: Parks update provided out of order after Item 3,a]

- Glynlea Park is 80% Complete
- Greenland Park is 80% Complete
- McGirts Restoration is 10% In Progress with consultant portion of work
- Scheduling: Julington Durbin, Genovar, Walter Anderson

No Motion/ No Vote.

(See Details on PGs 48-51 of February Agenda)

6. UFMP Update: Valerie Feinberg: UFMP has provided the Davie Consulting contract and scope of services to the General Council for distribution to Commission Members.

Outreach has begun, starting good conversations at CPAC meetings. Northwest showed great interest in new trees and UFMP observed the need for trees in the northwest CPAC. States Tree Commission has an opportunity to expand tree planting through community engagement and education as resources allow.

Materials and details of presentations are being made available to be added to the taskforce resource library.

DISCUSSION:

Sickler: When are the next and final deliverables or dates expected to be available?

Feinberg/ Fraser/ discussion regarding deliverables; want to have a logical place where relevant information can be easily found and accessible.

Nancy Powell: would like larger participation, including larger invitation for participation; concerns there is no strategic plan other than to spend tree fund money.

Sickler: question regarding UFMP process; timing.

Motion- Fraser: Have Davie Consultants return and present dates, and details of project to provide scope and timeframe for tree commission and set expectations. As last meeting did not provide coherent insight.

Feinberg [point of information] the number of meetings are set by contract and consultants are not local or on site; but will try to work something out.

Vote: approved as moved, unanimous

7. New Business

A. Money For Appropriations: Gearhart: Overview of past projects and allocations regarding appropriations. Discussion of funds. As of 2022 two-year appropriations had been requested by at the time council member Salem for "larger appropriations and lower legislation." Details and timeline on how funds were allocated and distributed over time through the Tree Commission. Funding requests with explanations put forward to Commission.

Request for action/follow-up- Produce specific documentation and workable condensed numbers to discuss for next meeting. Along with break down of level 2 (Remove and Replace) expenditures to correlate with produced document.

No motion; no vote.

B. Taskforce Update- Fraser: next meeting will be an open forum discussion, with contributing invested parties in attendance. Open invite. Date: March 20

C. Mike Zaffroni (Liberty Landscape Supply): 630-City tree planting programs; commending the program to plant trees in the right-of-ways; should be better promoted. Tampa as comparison, only 4 types of trees offered.

Justin Gearhart: the requests ebb & flow.

Hart: how to promote it.

Powell: asked about 100-tree challenge [Justin Gearhart provided background and plan for 100-tree challenge]

(See Details on PGs 52-60 of January Agenda)

END OF MEETING 11:41 AM

ATTACHMENT 1



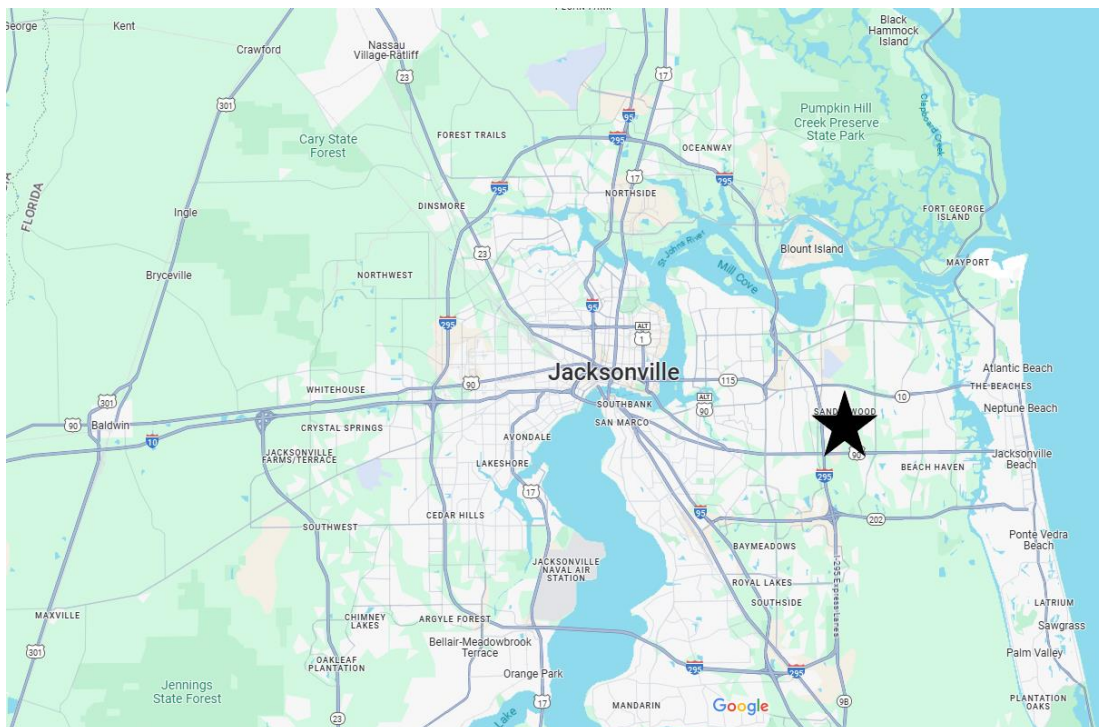
Beachwood Blvd Level II

Scope of Work

Description:

A tree planting project has been requested for planting in the right of way of Beachwood Blvd between Marina Drive and Starfish Ave. This project will take place in City Council District 4 and includes the planting of a variety of shade trees that will serve as an aesthetic improvement and a heat reduction purpose. In addition, these plantings will help to filter and slow down stormwater runoff before reaching the city's stormwater management infrastructure. All trees selected were shade trees to enhance the city's canopy. This project includes the planting of 31 total trees, with no tree removals necessary. To see a map of the planting plan, please see: <https://pg-cloud.com/JacksonvilleFL/?scenario=Beachwood-Blvd-Level-2>. All trees will be planted on public right of way areas within Duval County.

Approximate location of planting project within Duval County.





City of Jacksonville Parks – Level 2 Tree Planting

Riverfront Park

901 Landon St.

This is a proposed Level 2 Tree Planting Project designated for City of Jacksonville Riverfront Park at 901 Landon Ave. The park is a 1-block strip of land along the St. Johns River in San Marco, between Landon Ave. and Laverne St. The tree planting project proposed here will focus on existing and recent improvements to include walkways and benches; the focus to provide shade for park visitors and for the popular fishing areas. The site is narrow, so planting choices were based on species that would limit encroachment into the roadway yet provide shade to the site. Proposed plantings will reduce the heat index and provide screening from adjacent roadways. The focus will be on native plantings that can withstand salinity and windy conditions while maintaining views of the river. Plantings may be utilized in some cases to help define the perimeter boundaries of the park and to enhance and/or direct flow through the park space. The trees will include one-year warranty/maintenance.

<https://pg-cloud.com/jacksonvilleFL/>



Level 2 Tree Planting

Riverfront Park Level 2 Tree Planting - 901 Landon Ave.

Description	Unit	Quantity	Unit Price*	Extended Price
<i>Sabal palmetto</i> Sabal Palm 12" Cal., Regenerated, Clean Trunk	EA	19	\$700.00	\$13,300.00
<i>Sabal palmetto</i> Sabal Palm 16" Cal., Regenerated, Clean Trunk	EA	8	\$800.00	\$6,400.00
<i>Sabal palmetto</i> Sabal Palm 20" Cal., Regenerated, Clean Trunk	EA	9	\$1,000.00	\$9,000.00
<i>Ulmus alata</i> Winged Elm 4" Cal., 14' Ht., 8' Spd., 100 G or 40" B&B	EA	2	\$1,500.00	\$3,000.00
<i>Vitex agnus-castus</i> Chaste Tree 2" Cal., 8' Ht., 6' Spd., Multi 3 Tks	EA	8	\$1,000.00	\$8,000.00
Irrigation design & installation	Job			\$13,425.00
10% Contingency	Job			\$5,312.50
Subtotal				\$58,437.50

*Unit prices include 1-year warranty/maintenance of plant material per Contract CP-0459-22

LEVEL 2 COMMUNITY ORGANIZATION TREE PLANTING PROGRAM

The form below provides individual citizens and organizations with the opportunity to suggest a location for a tree planting project within Duval County that proposes to use funds from the City of Jacksonville Tree Protection and Related expenses Trust Fund. If a citizen or organization is interested in suggesting a planting location for the City to implement, then this form should be used.

Requirements to utilize this Program:

1. The location of the proposed planting must be:
 - a. In Duval County; and
 - b. On public property, such as a road right-of-way; a local, state or national park; Duval County School Board property, etc.

The following information must be provided:

1. Name/Title of Project: **Riverfront Park Tree Planting**
2. Legal Name of Organization/Citizen Making Suggestion: CM Carlucci
3. Organization or Citizen Mailing Address: 214 N. Hogan St.
4. Contact Phone Number: 255-7944 Email: jjohnson@coj.net
5. Location/Address of Planting Project: 901 Landon Ave.
6. Has project information been shared with the Council Member of the district? **Yes**
7. Rationale for Project (include information about the public benefit of the project):
Upcoming improvements at the park to include seating areas that would benefit from increased shade and heat mitigation. Planting will enhance river front area, provide buffer but not detract from views. Plantings selected based on ability to thrive in windy, possibly saline conditions.
8. Description of project:
Park amenities are exposed; shade trees are recommended to reduce the heat index in these areas for pedestrians utilizing the site

If a citizen/organization is interested in proposing a project that they want to administer and implement, a more comprehensive application (Level 3) can be found at the following link: <http://www.coj.net/departments/public-works/tree-commission>.

****To Be Completed By City of Jacksonville/Public Works Staff Only****

Level 2 - Community Organization Tree Planting Program Staff Checklist

Total number of trees to be installed 46 Project Title: RIVERFRONT PARK ☒ Project is to be planted on Public Land
 Total number of trees to be removed 0 ☒ Project is located in Duval County

Activity		Complete
1	The species of trees are appropriately located.	<input checked="" type="checkbox"/>
2	The number and placement of trees is appropriate.	<input checked="" type="checkbox"/>
3	Trees being planted are approved pursuant to the <u>'Tree Commission Approved Tree Planting List.'</u>	<input checked="" type="checkbox"/>
4	Shade Trees are preferred; if non-shade trees are proposed, the use is appropriated/acceptable.	<input checked="" type="checkbox"/>
5	Less than 25% of the total species of trees being planted are palms.	
6	The planting will not interfere with utilities or sight line requirements.	<input checked="" type="checkbox"/>
7	The project does not include incidental landscaping. If so, the applicant must justify the reason for its inclusion.	<input checked="" type="checkbox"/>
8	Construction required? Yes <input type="checkbox"/> No <input checked="" type="checkbox"/> If yes, are costs reasonable?	<input checked="" type="checkbox"/>
9	Irrigation installed? Yes <input checked="" type="checkbox"/> No <input type="checkbox"/> If yes, are costs reasonable?	<input checked="" type="checkbox"/>
10	The cost of the species of trees selected do not outweigh the benefits of the trees.	<input checked="" type="checkbox"/>
11	Low maintenance plants are utilized.	<input checked="" type="checkbox"/>
12	Location of plant material and irrigation (if applicable) has minimum adverse impact over time on infrastructure such as walks and roads.	<input checked="" type="checkbox"/>
13	Species of trees being planted are beneficial to the City's tree canopy.	<input checked="" type="checkbox"/>
14	The project provides unique benefit to the neighborhood, Council District, or City.	<input checked="" type="checkbox"/>
15	The project has been reviewed with and meets the needs of the requesting entity.	<input checked="" type="checkbox"/>
16	The Councilmember has been notified of the project.	<input checked="" type="checkbox"/>

COMMENTS: SABAL PALMS AND CHASTE TREES ARE PROPOSED DUE TO THE LIMITED LINEAR PLANTING SPACE ABUTTING THE BULKHEAD AND EXISTING UTILITIES WITHIN THE PARK SPACE AND IN THE RIGHT OF WAY.



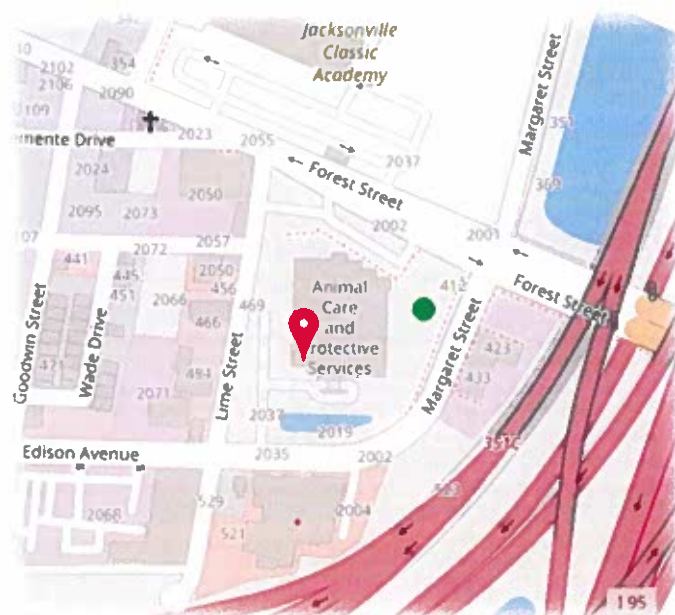
City of Jacksonville Parks – Level 2 Tree Planting

Animal Care and Protective Services Dog Park

2020 Forest St.

This is a proposed Level 2 Tree Planting Project designated for City of Jacksonville Animal Care and Protective Services (ACPS) Dog Park at 2020 Forest St. City of Jacksonville Parks was approached by ACPS to create a community dog park space for both the larger community to utilize and for volunteers to comfortably walk dogs. The dog park would also serve to connect more people with ACPS resources and their mission. The tree planting project proposed here will focus on recent improvements to include walking paths, benches, picnic tables, and fenced dog park areas. Proposed trees will reduce the heat index and provide screening from adjacent roadways. The focus will be on native, large canopy trees to provide shade and environmental value to the site. Trees may be utilized in some cases to help define the perimeter boundaries of the park and to enhance and/or direct flow through the park space. The trees will include a one-year warranty/maintenance.

<https://pg-cloud.com/jacksonvilleFL/>



ACPS Dog Park Level 2 Tree Planting - 2020 Forest St.						
Description						
		Unit	Quantity	Unit Price *	Extended Price	
<i>Chionanthus virginicus</i>	White Fringetree	2" Cal., 6' Ht., 4' Spd., 30 G or 24" B&B	EA	7	\$1,100.00	\$7,700.00
<i>Ulmus alata</i>	Winged Elm	2" Cal., 10' Ht., 4' Spd., 25 G or 24" B&B	EA	7	\$750.00	\$5,250.00
<i>Platanus occidentalis</i>	American Sycamore	4" Cal., 14' Ht., 8' Spd., 40" B&B	EA	7	\$1,400.00	\$9,800.00
<i>Quercus shumardii</i>	Shumard Oak	4" Cal., 14' Ht., 100 G or 40" B&B	EA	3	\$1,600.00	\$4,800.00
Existing irrigation Repair/Restoration			Job			\$6,860.00
Subtotal						\$34,410.00

Description	Unit	Quantity	Unit Price*	Extended Price
<u>Chionanthus virginicus</u> White Fringetree 2" Cal., 6' Ht., 4' Spd., 30 G or 24" B&B	EA	7	\$1,100.00	\$7,700.00
<u>Ulmus alata</u> Winged Elm 2" Cal., 10' Ht., 4' Spd., 25 G or 24" B&B	EA	7	\$750.00	\$5,250.00
<u>Platanus occidentalis</u> American Sycamore 4" Cal., 14' Ht., 8' Spd., 40" B&B	EA	7	\$1,400.00	\$9,800.00
<u>Quercus shumardii</u> Shumard Oak 4" Cal., 14' Ht., 100 G or 40" B&B	EA	3	\$1,600.00	\$4,800.00
Existing irrigation Repair/Restoration	Job			\$6,860.00
Subtotal				\$34,410.00

*Unit prices include 1-year warranty/maintenance of plant material per Contract CP-0459-22

LEVEL 2 COMMUNITY ORGANIZATION TREE PLANTING PROGRAM

The form below provides individual citizens and organizations with the opportunity to suggest a location for a tree planting project within Duval County that proposes to use funds from the City of Jacksonville Tree Protection and Related expenses Trust Fund. If a citizen or organization is interested in suggesting a planting location for the City to implement, then this form should be used.

Requirements to utilize this Program:

1. The location of the proposed planting must be:
 - a. In Duval County; and
 - b. On public property, such as a road right-of-way; a local, state or national park; Duval County School Board property, etc.

The following information must be provided:

1. Name/Title of Project: **ACPS Dog Park Tree Planting**
2. Legal Name of Organization/Citizen Making Suggestion: ACPS – Michael Bricker – Chief ACPS
3. Organization or Citizen Mailing Address: 2020 Forest St.
4. Contact Phone Number: 255-7944 Email: jjohnson@coj.net
5. Location/Address of Planting Project: 2020 Forest St.
6. Has project information been shared with the Council Member of the district? **Yes**
7. Rationale for Project (include information about the public benefit of the project):
Upcoming improvements at the dog park – picnic tables, walks, recreation areas for dogs – that will benefit from shade and screening from adjacent roadways.
8. Description of project:
Park amenities are exposed; shade trees are recommended to reduce the heat index in these areas for humans and dogs utilizing the site

If a citizen/organization is interested in proposing a project that they want to administer and implement, a more comprehensive application (Level 3) can be found at the following link: <http://www.coj.net/departments/public-works/tree-commission>.

To Be Completed By City of Jacksonville/Public Works Staff Only

Level 2 - Community Organization Tree Planting Program Staff Checklist

Total number of trees to be installed 24

☒ Project is to be planted on Public Land

Total number of trees to be removed 0

☒ Project is located in Duval County

Project Title:

ACPS DOG PARK

Activity		Complete
1	The species of trees are appropriately located.	✓
2	The number and placement of trees is appropriate.	✓
3	Trees being planted are approved pursuant to the <u>'Tree Commission Approved Tree Planting List.'</u>	✓
4	Shade Trees are preferred; if non-shade trees are proposed, the use is appropriated/acceptable.	✓
5	Less than 25% of the total species of trees being planted are palms.	✓
6	The planting will not interfere with utilities or sight line requirements.	✓
7	The project does not include incidental landscaping. If so, the applicant must justify the reason for its inclusion.	✓
8	Construction required? Yes <input checked="" type="checkbox"/> No <input checked="" type="checkbox"/> If yes, are costs reasonable?	✓
9	Irrigation installed? Yes <input checked="" type="checkbox"/> No <input checked="" type="checkbox"/> If yes, are costs reasonable? <u>RESTORATION OF EXISTING</u>	✓
10	The cost of the species of trees selected do not outweigh the benefits of the trees.	✓
11	Low maintenance plants are utilized.	✓
12	Location of plant material and irrigation (if applicable) has minimum adverse impact over time on infrastructure such as walks and roads.	✓
13	Species of trees being planted are beneficial to the City's tree canopy.	✓
14	The project provides unique benefit to the neighborhood, Council District, or City.	✓
15	The project has been reviewed with and meets the needs of the requesting entity.	✓
16	The Councilmember has been notified of the project.	✓

COMMENTS: TYING INTO EXISTING IRRIGATION FOR PROPOSED TREES



City of Jacksonville Parks – Level 2 Tree Planting

Warrington Park

325 N. Bowlan St.

This is a proposed Level 2 Tree Planting Project designated for City of Jacksonville Warrington Park at 325 Bowlan St. The park is located adjacent to the Woodland Acres Elementary School. The tree planting project proposed here will focus on existing and recent improvements to include walkways, picnic tables, benches; the focus is to provide shade for park playground visitors and for the tennis, pickleball and basketball court areas. Proposed plantings will reduce the heat index and provide screening from adjacent roadways. The focus will be on native plantings that will provide much-needed shade. Plantings may be utilized in some cases to help define the perimeter boundaries of the park and to enhance and/or direct flow through the park space. The trees will include one-year warranty/maintenance.

<https://pg-cloud.com/jacksonvilleFL/>



Warrington Park Level 2 Tree Planting - 325 Bowlan St.

Description	Unit	Quantity	Unit Price*	Extended Price
<u>Quercus virginiana</u> Live Oak 4" Cal., 14' Ht., 8' Spd., 100 G or 40" B&B	EA	20	\$1,700.00	\$34,000.00
<u>Ulmus alata</u> Winged Elm 4" Cal., 14' Ht., 8' Spd., 100 G or 40" B&B	EA	9	\$1,750.00	\$15,750.00
<u>Pinus palustris</u> Longleaf Pine 3" Cal., 10' Ht., 3' Spd., 32" B&B	EA	20	\$700.00	\$14,000.00
<u>Juniperus silicicola</u> Red Cedar 3" Cal., 10' Ht., 4' Spd., 36" B&B Dense	EA	8	\$1,000.00	\$8,000.00
<u>Magnolia grandiflora</u> 'DD Blanchard' 4" Cal., 12' Ht., 6' Spd., 40" B&B	EA	10	\$1,750.00	\$17,500.00
Tree Removal - Multi Trunk 10' Ht. dead/dying Crapemyrtle	EA	3	\$350.00	\$1,050.00
Subtotal				\$90,300.00

*Unit prices include 1-year warranty/maintenance of plant material per Contract CP 0459-22

LEVEL 2 COMMUNITY ORGANIZATION TREE PLANTING PROGRAM

The form below provides individual citizens and organizations with the opportunity to suggest a location for a tree planting project within Duval County that proposes to use funds from the City of Jacksonville Tree Protection and Related expenses Trust Fund. If a citizen or organization is interested in suggesting a planting location for the City to implement, then this form should be used.

Requirements to utilize this Program:

1. The location of the proposed planting must be:
 - a. In Duval County; and
 - b. On public property, such as a road right-of-way; a local, state or national park; Duval County School Board property, etc.

The following information must be provided:

1. Name/Title of Project: **Warrington Park Tree Planting**
2. Legal Name of Organization/Citizen Making Suggestion: Jill Enz
3. Organization or Citizen Mailing Address: 214 N. Hogan St.
4. Contact Phone Number: 255-7906 Email: kmcgovern@coj.net
5. Location/Address of Planting Project: 325 N. Bowlan St.
6. Has project information been shared with the Council Member of the district? **Yes**
7. Rationale for Project (include information about the public benefit of the project):
Upcoming improvements at the park to include seating areas that would benefit from increased shade and heat mitigation.
8. Description of project:
Park amenities are exposed; shade trees are recommended to reduce the heat index in these areas for pedestrians utilizing the site

If a citizen/organization is interested in proposing a project that they want to administer and implement, a more comprehensive application (Level 3) can be found at the following link: <http://www.coj.net/departments/public-works/tree-commission>.

To Be Completed By City of Jacksonville/Public Works Staff Only

Level 2 - Community Organization Tree Planting Program Staff Checklist

Total number of trees to be installed 67 Project Title: WARRINGTON PARK ☒ Project is to be planted on Public Land

Total number of trees to be removed (3) Dead Grape Nuts ☒ Project is located in Duval County

Activity		Complete
1	The species of trees are appropriately located.	<input checked="" type="checkbox"/>
2	The number and placement of trees is appropriate.	<input checked="" type="checkbox"/>
3	Trees being planted are approved pursuant to the 'Tree Commission Approved Tree Planting List.'	<input checked="" type="checkbox"/>
4	Shade Trees are preferred; if non-shade trees are proposed, the use is appropriated/acceptable.	<input checked="" type="checkbox"/>
5	Less than 25% of the total species of trees being planted are palms.	<input checked="" type="checkbox"/>
6	The planting will not interfere with utilities or sight line requirements.	<input checked="" type="checkbox"/>
7	The project does not include incidental landscaping. If so, the applicant must justify the reason for its inclusion.	<input checked="" type="checkbox"/>
8	Construction required? Yes <input type="checkbox"/> No <input checked="" type="checkbox"/> If yes, are costs reasonable?	<input checked="" type="checkbox"/>
9	Irrigation installed? Yes <input type="checkbox"/> No <input checked="" type="checkbox"/> If yes, are costs reasonable?	<input checked="" type="checkbox"/>
10	The cost of the species of trees selected do not outweigh the benefits of the trees.	<input checked="" type="checkbox"/>
11	Low maintenance plants are utilized.	<input checked="" type="checkbox"/>
12	Location of plant material and irrigation (if applicable) has minimum adverse impact over time on infrastructure such as walks and roads.	<input checked="" type="checkbox"/>
13	Species of trees being planted are beneficial to the City's tree canopy.	<input checked="" type="checkbox"/>
14	The project provides unique benefit to the neighborhood, Council District, or City.	<input checked="" type="checkbox"/>
15	The project has been reviewed with and meets the needs of the requesting entity.	<input checked="" type="checkbox"/>
16	The Councilmember has been notified of the project.	<input checked="" type="checkbox"/>

COMMENTS:

LEVEL 2 COMMUNITY ORGANIZATION TREE PLANTING PROGRAM

The form below provides individual citizens and organizations with the opportunity to suggest a location for a tree planting project within Duval County that proposes to use funds from the City of Jacksonville Tree Protection and Related Expenses Trust Fund. If a citizen or organization is interested in suggesting a planting location for the City to implement, then use this form.

Requirements to utilize this program:

1. The location of the proposed planting must be:
 - a. In Duval County; and
 - b. On public property, such as a road right-of-way; a local, state or national park; Duval County School Board property, etc.

Complete the following information below:

1. Name/title of project: Beachwood Blvd Level 2
2. Legal name of organization/citizen making suggestion:
Christa Robinson
3. Organization or citizen mailing address:
11800 UNF Dr, Jacksonville, Florida 32224
4. Contact phone number: (904)762-7086
Contact e-mail: ceerobin15@gmail.com
5. Location/address of planting project:
Beachwood Blvd
6. Has project information been shared with the Council Member of the district? Yes
7. Rationale for project (include information about the public benefit of the project):
Aesthetic improvement while adding shade, canopy and stormwater retention benefits
8. Description of project:
Trees to be added along Beachwood Blvd Between Beachwood Community Center/Park and end of the road.

If a citizen/organization is interested in proposing a project that they want to administer and implement, a more comprehensive application (Level 3) can be found at the following link: <http://www.coj.net/departments/public-works/tree-commission>.

Level 2 - Community Organization Tree Planting Program Staff Checklist

Total number of trees to be installed 31

☒ Project is to be planted on Public Land

Total number of trees to be removed 0

Project Title:

Beachwood Blvd Level 2

☒ Project is located in Duval County

Activity		Complete
1	The species of trees are appropriately located.	J6
2	The number and placement of trees is appropriate.	J6
3	Trees being planted are approved pursuant to the 'Tree Commission Approved Tree Planting List.'	J6
4	Shade Trees are preferred; if non-shade trees are proposed, the use is appropriated/acceptable.	J6
5	Less than 25% of the total species of trees being planted are palms.	J6
6	The planting will not interfere with utilities or sight line requirements.	J6
7	The project does not include incidental landscaping. If so, the applicant must justify the reason for its inclusion.	J6
8	Construction required? Yes <input type="checkbox"/> No <input checked="" type="checkbox"/> If yes, are costs reasonable?	J6
9	Irrigation installed? Yes <input type="checkbox"/> No <input checked="" type="checkbox"/> If yes, are costs reasonable?	J6
10	The cost of the species of trees selected do not outweigh the benefits of the trees.	J6
11	Low maintenance plants are utilized.	J6
12	Location of plant material and irrigation (if applicable) has minimum adverse impact over time on infrastructure such as walks and roads.	J6
13	Species of trees being planted are beneficial to the City's tree canopy.	J6
14	The project provides unique benefit to the neighborhood, Council District, or City.	J6
15	The project has been reviewed with and meets the needs of the requesting entity.	J6
16	The Councilmember has been notified of the project.	J6

COMMENTS:



April 28, 2025

Re: Beachwood Blvd Level 2

In accordance with bid #CP-0165-19, Liberty Landscape Supply proposes the following to include all labor, materials, equipment, taxes, delivery, installation, **2 Year Non-Irrigated** warranty, insurance, etc. for <https://pg-cloud.com/JacksonvilleFL/?scenario=Beachwood-Blvd-Level-2>:

ITEM	QUANTITY	PRICE/UNIT(NON-IRR)	TOTAL
Platanus occidentalis (American Sycamore) 3" Cal, 12' HT, 6' Spd, 65G or 36" B&B	7	\$ 1,854.09	\$ 12,978.63
Quercus Virginiana (Live Oak) 3" Cal, 12' HT, 6' Spd, 65G or 36" B&B	9	\$ 2,295.54	\$ 20,659.86
Olea europaea (Olive Tree) 2" Cal, 10' Ht, 4' Spd, 65G or 36" B&B	5	\$ 1,500.93	\$ 7,504.65
Pinus palustris (Long Leaf Pine) 3" Cal, 10' HT, 3' Spd, 65G or 32" B&B	10	\$ 1,942.38	\$ 19,423.80
	31 Trees		\$ 60,566.94

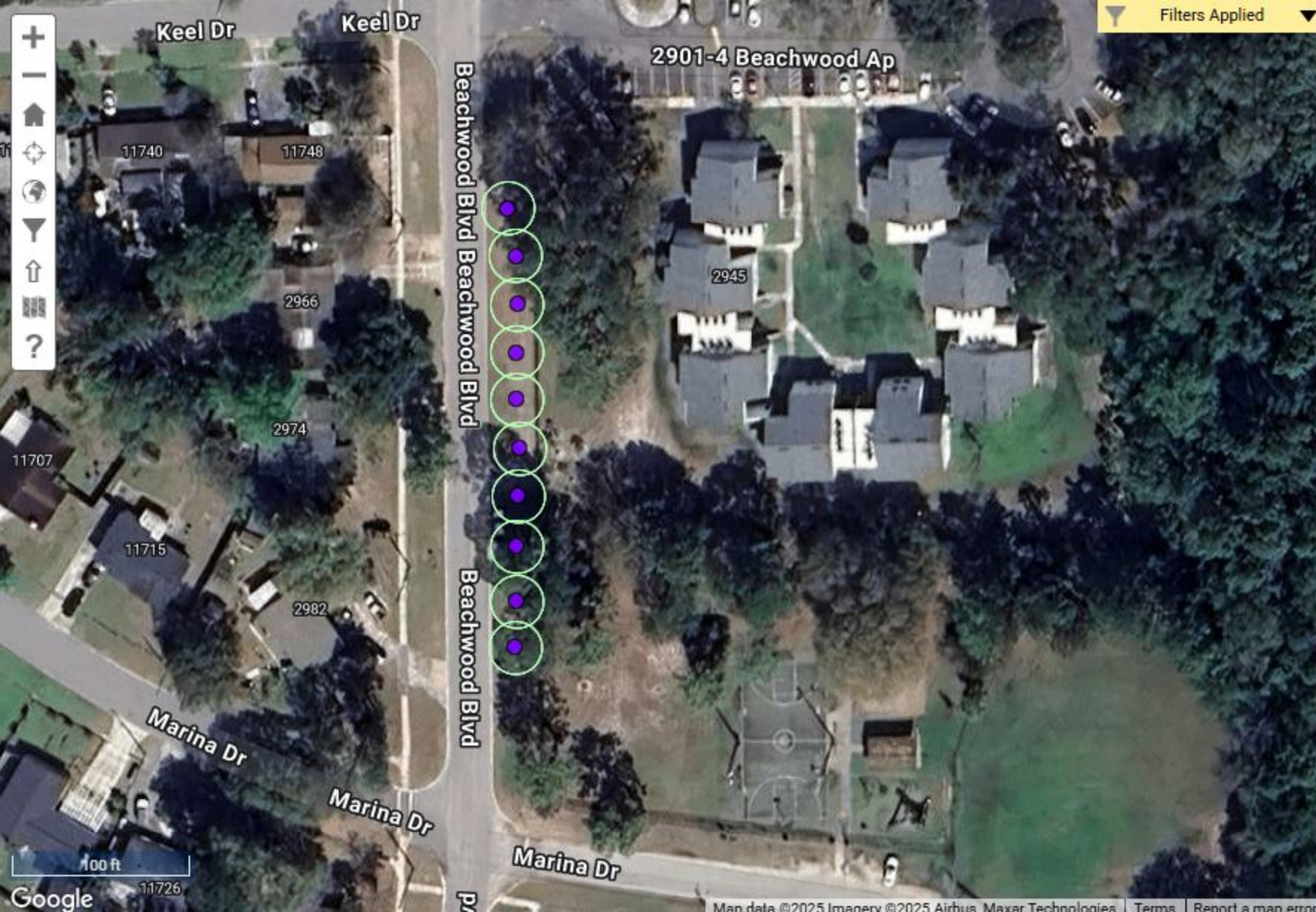
Respectfully,

Mike Zaffaroni, Owner/President

Liberty Landscape Supply

13385 N Main St

Jacksonville, FL 32218



Filters Applied

LEGEND

Jacksonville, FL

Layer: Trees

Display by: Species

Symbology: Spread Radius

You're viewing the **Beachwood Blvd Level 2** trees.
Showing 10 of 31 sites.

[SHOW ALL TREES](#) [SHOW WORK ORDERS](#)

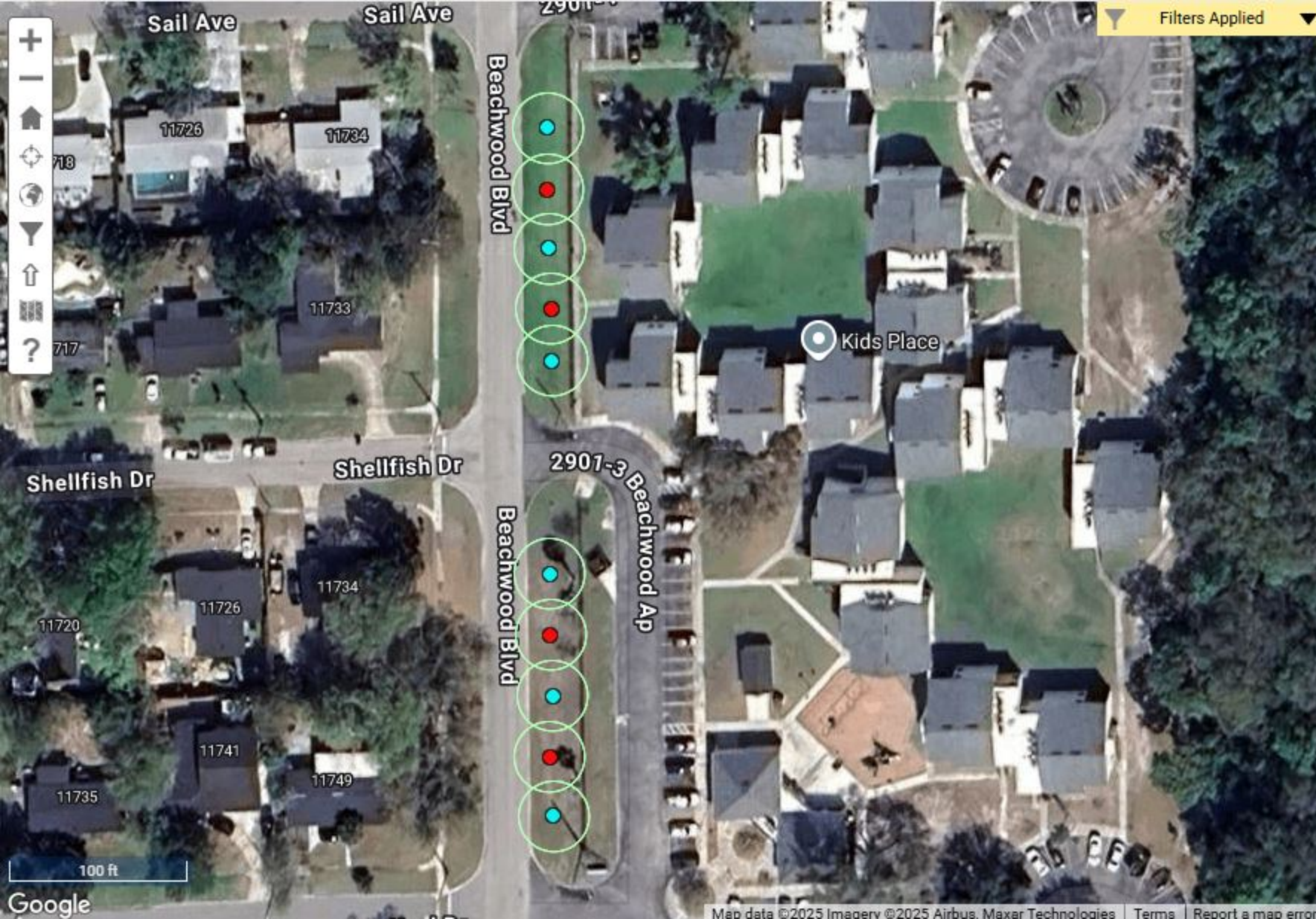
☒ Toggle All ?

- ☒ ● American Sycamore (7)
- ☒ ● Common Olive (5)
- ☒ ● Live Oak (9)
- ☒ ● Longleaf pine (10)

Charts

Layers

- ☐ ■ ROW
- ☐ ● Sample Streets
- ☐ ● 7% Sample
- ☐ ■ City Allocated Parcels
- ☐ ■ Boundary
- ☐ ● Council Districts



Filters Applied

LEGEND

Jacksonville, FL

Layer: Trees

Display by: Species

Symbology: Spread Radius

You're viewing the **Beachwood Blvd Level 2** trees.
Showing 10 of 31 sites.

[SHOW ALL TREES](#) [SHOW WORK ORDERS](#)

☒ Toggle All ?

☒ ● American Sycamore (7)

☒ ● Common Olive (5)

☒ ● Live Oak (9)

☒ ● Longleaf pine (10)

Charts

Layers

☐ ROW

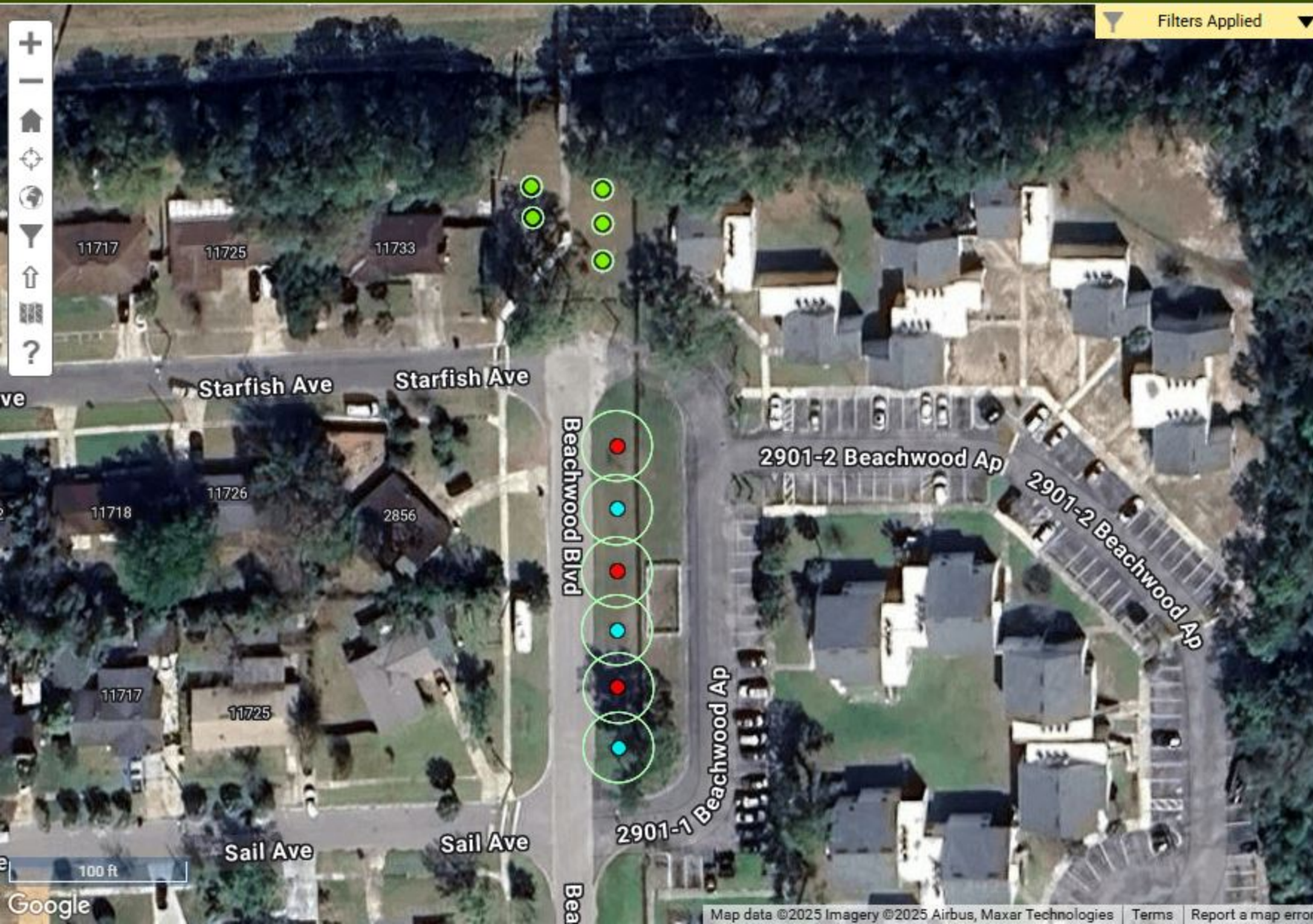
☐ Sample Streets

☐ 7% Sample

☐ City Allocated Parcels

☐ Boundary

☐ Council Districts



Filters Applied

LEGEND

Jacksonville, FL

Layer: Trees

Display by: Species

Symbology: Spread Radius

You're viewing the **Beachwood Blvd Level 2** trees.
Showing 11 of 31 sites.

[SHOW ALL TREES](#)

[SHOW WORK ORDERS](#)

☒ Toggle All ?

☒ ● American Sycamore (7)

☒ ● Common Olive (5)

☒ ● Live Oak (9)

☒ ● Longleaf pine (10)

Charts

Layers

- ☐ ■ ROW
- ☐ ■ Sample Streets
- ☐ ■ 7% Sample
- ☐ ■ City Allocated Parcels
- ☐ ■ Boundary
- ☐ ■ Council Districts

Potential Trees to add to Approved Species List

Celtis laevigata (Sugarberry or sugar hackberry tree)

Native: Yes

USDA Zones: 5A through 10B

Height: 50 to 70 feet

Spread 50 to 60 feet

Growth Rate: Fast

Light Requirement: Full sun to partial shade

Drought Tolerance: High

Salt Tolerance: High

Availability: Currently low

Best grows in moist soil, full sun location. Sensitive to alkaline soils. Bird favored tree due to fruit.



Prunus angustifolia (Chickasaw Plum)

Native: Yes

USDA Zones: 6A through 9B

Height: 12 to 20 feet

Spread: 15 to 20 feet

Growth Rate: Moderate

Light Requirements: Full sun to partial shade

Drought Tolerance: High

Salt Tolerance: Unknown

Availability: Currently low

A small tree with shorter life span, known for showy flowers, and edible fruit.



Ulmus americana (American Elm or Florida Elm)

Native: Yes

USDA Zones: 2A through 9B

Height: 70 to 90 feet

Spread: 50 to 70 feet

Growth Rate: Fast

Light Requirements: Full sun to Partial Shade

Drought Tolerance: High

Salt Tolerance: Moderate

Availability: Moderate

A tree that should be planted with thought. Due to Dutch Elm Disease, it should be monitored and the few planted as part of wetter, rich soils based on past Jacksonville Plantings.



***Quercus incana*, Bluejack Oak¹**

Melissa H. Friedman, Michael G. Andreu, Heather V. Quintana, and Mary McKenzie²

Family

Fagaceae, beech and oak family.

Genus

Quercus is the Latin word for “oak,” and it is formed from two Celtic words: *quer* meaning “beautiful” and *cuez* meaning “tree.”

Species

The species name *incana* stems from the Latin word *incan*, which means “gray or white with age.”

Common Names

Bluejack Oak, Scrub Oak

The name “bluejack” refers to the bluish color of the leaves. The name “scrub oak” stems from the habitat where this species grows. However, at least six other oak species (*Q. chapmanii*, *Q. geminata*, *Q. laevis*, *Q. margarettae*, *Q. myrtifolia*, and *Q. pumila*) go by the name “scrub oak,” so it is best to use the scientific name when referring to this tree.

Description

This deciduous and native shrub-like tree frequents the xeric sandy soils of ridges, sandhills, and scrub from Virginia south to Florida and west to Texas and Oklahoma. It grows best in full sun and can reach heights of up to 55 feet. Leaves are simple and alternate, and grow between 1 to

4 inches long. The leaves are narrowly elliptic to lanceolate in shape. Leaf margins or edges are smooth and the tip of the leaf is pointed. The top side of the leaf is bluish to ashy green, and the underside is silvery with a light layer of pubescence or hair. The thick bark is dark gray to black and has wide and deep furrows or grooves. Acorns mature in two years, yielding nuts that are small (ranging from 3/8 to 5/8 inches long) and brown. The top 1/4 of the nut is attached to a reddish-brown cup that exhibits pubescence on its underside.



Figure 1. Leaves and acorns of *Quercus incana* growing in Florida.
Credits: CA Floristics, CC BY-NC-ND 2.0

Allergen

All members of this genus are known to produce large amounts of pollen, making both deciduous and evergreen oaks highly to extremely allergenic.

1. This document is FOR 248, one of a series of the School of Forest, Fisheries, and Geomatics Sciences, UF/IFAS Extension. Original publication date May 2010. Reviewed February 2022. Visit the EDIS website at <https://edis.ifas.ufl.edu> for the currently supported version of this publication.
2. Melissa H. Friedman, former biological scientist; Michael G. Andreu, associate professor of forest systems; Heather V. Quintana, former research assistant; and Mary McKenzie, former research assistant; School of Forest, Fisheries, and Geomatics Sciences; UF/IFAS Extension, Gainesville, FL 32611.

The Institute of Food and Agricultural Sciences (IFAS) is an Equal Opportunity Institution authorized to provide research, educational information and other services only to individuals and institutions that function with non-discrimination with respect to race, creed, color, religion, age, disability, sex, sexual orientation, marital status, national origin, political opinions or affiliations. For more information on obtaining other UF/IFAS Extension publications, contact your county's UF/IFAS Extension office. U.S. Department of Agriculture, UF/IFAS Extension Service, University of Florida, IFAS, Florida A & M University Cooperative Extension Program, and Boards of County Commissioners Cooperating. Andra Johnson, dean for UF/IFAS Extension.

Applications

Horticultural

As with most oaks, bluejack oak has a superior ability to attract wildlife. For this reason, gardeners who are interested in providing a haven for wildlife in the midst of urbanization often plant oaks. However, as subdivision yard sizes have shrunk over time, the planting of a larger tree, such as a live oak (*Quercus virginiana*), is often impractical. Smaller oaks such as the bluejack oak can be used instead. While bluejack oak can reach heights of 55 feet, it generally is a small-statured tree and can be “trained” as such. Additionally, this species does not sprout from underground runners and, therefore, will not take over a garden as do many other oaks. Because scrub is the natural habitat of bluejack oak, it is adapted to droughty environments, making it a water-conserving species that is easy to care for. Like other oaks, the leaves and acorns have high tannin content that will stain light colored concrete, so it’s best to plant this tree away from susceptible areas if such an occurrence is undesirable.

Wildlife

The acorns of the bluejack oak attract many types of wildlife, including various species of birds and mammals, such as squirrels, raccoons, wild turkey, and deer.

References

Austin, D. F. 2004. *Florida ethnobotany*. Boca Raton, FL: CRC Press.

Borror, D. J. 1988. *Dictionary of root words and combining forms* (1st ed.). Mountain View, CA: Mayfield Publishing Company.

Dictionary.com. (2010). *bluejack*, Retrieved from <http://dictionary.reference.com/browse/bluejack>

Gledhill, D. 1989. *The names of plants* (2nd ed.). Cambridge: Press Syndicate of the University of Cambridge.

Godfrey, R. K. 1988. *Trees, shrubs, and woody vines of Northern Florida and adjacent Georgia and Alabama*. Athens, GA: The University of Georgia Press.

Kurz, H. and R. K. Godfrey. 1993. *Trees of Northern Florida*. Gainesville, FL: University Press of Florida.

Nelson, G. 1994. *The trees of Florida: A reference and field guide*. Sarasota, FL: Pineapple Press.

Ogren, T. L. 2000. *Allergy-free gardening: The revolutionary guide to healthy landscaping*. Berkeley, CA: Ten Speed Press.

Osorio, R. 2001. *A gardener’s guide to Florida’s native plants*. Gainesville, FL: University Press of Florida.

Stein, J., D. Binion, and R. Acciavatti. 2003. *Field guide to native oak species of Eastern North America*. Morgantown, WV: USDA Forest Service.

***Quercus chapmanii*, Chapman Oak¹**

Michael G. Andreu, Melissa H. Friedman, Mary McKenzie, and Heather V. Quintana²

Family

Fagaceae, beech and oak family.

Genus

Quercus comes from the Latin name for “oak.” It is formed from two Celtic words: *quer* (“beautiful”), and *cuez* (“tree”).

Species

The species name, *chapmanii*, is after the physician and botanist A. W. Chapman (1809–1899), the first person to describe this species in his book titled “*Flora of the South-eastern United States*.”

Common Names

Chapman Oak, Chapman White Oak, Scrub Oak

The common name Chapman oak is a literal translation of its scientific name. Some may have added the word “white” to form the name “Chapman white oak” because it belongs to the white oak group, as opposed to the red oak group. The common name “scrub oak” is associated with this tree because it occurs in dry scrub habitats.



Figure 1. Leaves and acorns of *Quercus chapmanii*.

Credits: Homer Edward Price, (CC BY 2.0)

Description

This native oak is naturally found in the dry, xeric habitats of sandy ridges and coastal dunes throughout most of Florida and coastal Alabama, Georgia, and the southern portion of South Carolina. It is considered to be a small-statured tree rarely exceeding heights of 30 feet. Leaves are simple and alternate, and range from 1½ to 3½ inches long. Their shape can range from obovate or oblong, with the broadest part of the leaf below the rounded apex but above the middle portion. Leaves may exhibit a waviness or become slightly lobed, and the margins or edges are smooth. The topside of the leaf is a shiny dark green and the

1. This document is FOR 243, one of a series of the School of Forest, Fisheries, and Geomatics Sciences, UF/IFAS Extension. Original publication date May 2010. Reviewed February 2022. Visit the EDIS website at <https://edis.ifas.ufl.edu> for the currently supported version of this publication.
2. Michael G. Andreu, associate professor of forest systems, School of Forest, Fisheries, and Geomatics Sciences; Melissa H. Friedman, former biological scientist, School of Forest, Fisheries, and Geomatics Sciences, UF/IFAS Extension, Plant City Center; Mary McKenzie, former research assistant, School of Forest, Fisheries, and Geomatics Sciences; and Heather V. Quintana, former research assistant, School of Forest, Fisheries, and Geomatics Sciences; UF/IFAS Extension, Gainesville, FL 32611.

The Institute of Food and Agricultural Sciences (IFAS) is an Equal Opportunity Institution authorized to provide research, educational information and other services only to individuals and institutions that function with non-discrimination with respect to race, creed, color, religion, age, disability, sex, sexual orientation, marital status, national origin, political opinions or affiliations. For more information on obtaining other UF/IFAS Extension publications, contact your county's UF/IFAS Extension office. U.S. Department of Agriculture, UF/IFAS Extension Service, University of Florida, IFAS, Florida A & M University Cooperative Extension Program, and Boards of County Commissioners Cooperating. Andra Johnson, dean for UF/IFAS Extension.

underside is a dull light green to almost yellow, with pubescence (tiny hairs) along the midvein. The tardily deciduous leaves turn yellow or red in the fall and winter months, and by spring are no longer present on the tree. Bark is a light gray to grayish brown color and has scaly plates. Each year acorns just under ½ inch in size are produced in pairs, and a gray cup encloses the top half of each brown nut.

Allergen

All members of the *Quercus* genus are known to produce large amounts of pollen, making both deciduous and evergreen oaks highly to extremely allergenic.

Applications

Horticultural

The Chapman oak is not grown for the same qualities attributable to many other oak species. However, at only 6 to 30 feet tall it can make for a quaint specimen during the fall and winter months when its leaves turn attractive shades of red and yellow, or in the spring when long catkins appear alongside its new growth.

Medicinal

Members of the *Quercus* genus contain a chemical known as tannin, which is the active chemical in most medicine made from oaks. Experiments have shown that this compound contains properties that prevent viruses, infections, and tumors. However, some tannins have been suspected of being carcinogenic.

Wildlife

Acorns of the Chapman oak provide a significant source of food to a variety of wildlife, ranging from birds to large mammals.

References

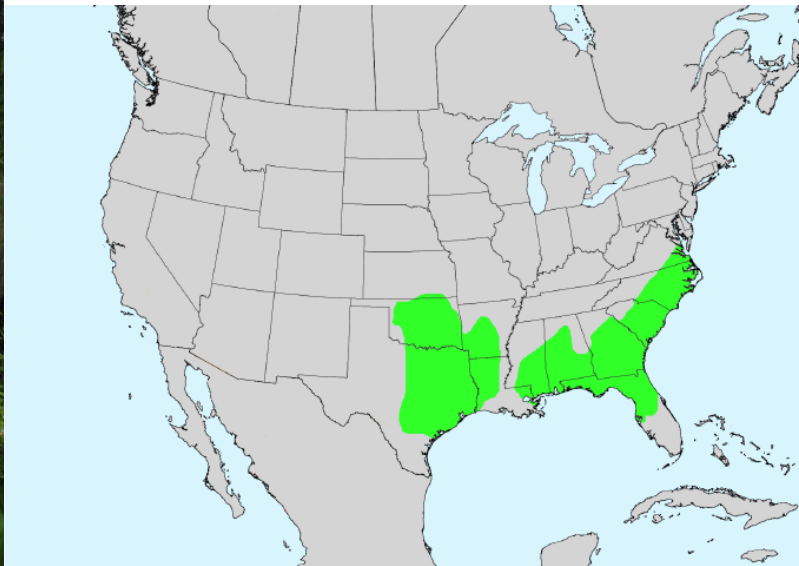
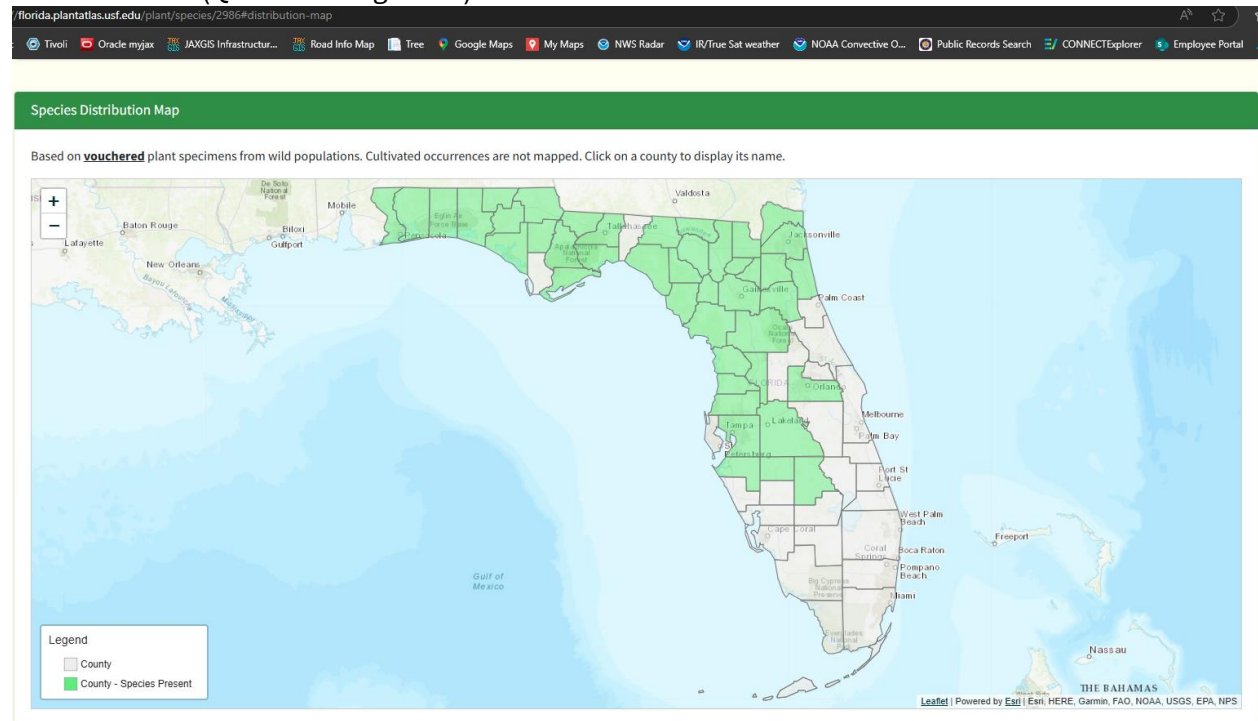
- Austin, D. F. 2004. *Florida ethnobotany*. Boca Raton, FL: CRC Press.
- Godfrey, R. K. 1988. *Trees, shrubs, and woody vines of Northern Florida and adjacent Georgia and Alabama*. Athens, GA: The University of Georgia Press.
- Little, E. L. 2005. *National Audubon Society field guide to trees, Eastern region*. New York, NY: Alfred A. Knopf, Inc.
- Nelson, G. 1994. *The trees of Florida: A reference and field guide*. Sarasota, FL: Pineapple Press.

Ogren, T. L. 2000. *Allergy-free gardening: The revolutionary guide to healthy landscaping*. Berkeley, CA: Ten Speed Press.

Osorio, R. 2001. *A gardener's guide to Florida's native plants*. Gainesville, FL: University Press of Florida.

Stein, J., D. Binion, and R. Acciavatti. 2003. *Field guide to native oak species of Eastern North America*. Morgantown, WV: USDA Forest Service.

Sand Post Oak (*Quercus margaretta*)



Source: Virginia tech dendrology

<https://dendro.cnre.vt.edu/dendrology/syllabus/factsheet.cfm?ID=427>



Virginia Tech Dendrology

 Search

sand post oak *Quercus margaretta* (Ashe) Small symbol: [QUMA13](#)

Leaf: Alternate, simple, 4 to 6 inches long, 3 to 5 lobed (irregular), lobes are rounded and middle pair somewhat square (similar to *Quercus stellata*, post oak), thick texture, shiny green above, downy and pale below.

Flower: Species is monoecious; male flowers are light green slender catkins, 2 to 3 inches long; females are very small, reddish and appear as short spikes, appearing with the leaves.

Fruit: Acorns, 1/2 inch long, light brown, bowl shaped cap has thin scales and covers 1/3 to 1/2 of acorn, mature in one year, ripen in fall.

Twig: Moderate, gray and glabrous to sparsely tomentose, multiple terminal buds are larger than post oak.

Bark: Gray to gray-brown, scaly initially and later developing vertical ridges and becoming darker.

Form: A small tree up to 50 feet with a broad crown and twisted branches.

Looks like: [post oak](#) - [white oak](#) - [overcup oak](#) - [bur oak](#)



Additional Range Information: *Quercus margaretta* is native to North America. Range may be expanded by planting. [Download the full-size PDF map.](#)

Quercus laevis, Turkey Oak¹

Michael G. Andreu, Melissa H. Friedman, Mary McKenzie, and Heather V. Quintana²

Family

Fagaceae, beech and oak family.

Genus

Quercus comes from the Latin name for “oak” and is formed from two Celtic words: *quer* meaning “beautiful” and *cuez* meaning “tree.”

Species

The genus name *laevis* stems from the Latin word for “smooth, slippery, or polished,” and it refers to the nearly hairless leaves that remain after most pubescence has sloughed off by late season.

Common Names

Turkey Oak, Turkey-Foot Oak, Scrub Oak

The common names “turkey oak” or “turkey-foot oak” come from the shape of the leaves, which resemble a turkey’s foot or foot print. The name “scrub oak” comes from the habitat in which this species is commonly found. However, at least six other oak species in Florida (*Q. chapmanii*, *Q. geminata*, *Q. incana*, *Q. margarettae*, *Q. myrtifolia*, and *Q. pumila*) may go by the same name, so it is best to use scientific names when referring to these tree species.

Description

This native deciduous oak frequents xeric sand dunes, sandhills, and ridges from Virginia south to central Florida and west to the southeastern portion of Louisiana. This tree generally grows to about 40 feet but can reach heights of 70 feet. Turkey oak will grow best in full sun and tends to remain in the shrub layer when shaded. Leaves are simple and alternate, grow from 4 to 8 inches long, and have 3 to 7 lobes with deep sinuses. The top side of the leaf is light green, and the bottom side is a paler or duller green with a characteristic reddish pubescence or hair in the vein axils when the leaves are young. Veins on the top and bottom surfaces of the leaf are prominent, and the margins or edges of the leaf are entire or smooth. Bark is gray to darker gray on the outside, deeply furrowed with irregular ridges, and the inner bark is a reddish color. Fruits are 3/4 to 1 inch elliptical or egg-shaped acorns with about 1/3 of the nut housed in a bowl-shaped cup. Acorns are generally produced every year and take two years to mature.

Allergen

All members of the *Quercus* genus are known to produce large amounts of pollen, making both deciduous and evergreen oaks highly to extremely allergenic.

Storm Tolerance

Turkey oak has a high resistance to wind.

1. This document is FOR 250, one of a series of the School of Forest, Fisheries, and Geomatics Sciences, UF/IFAS Extension. Original publication date May 2010. Reviewed February 2022. Visit the EDIS website at <https://edis.ifas.ufl.edu> for the currently supported version of this publication.

2. Michael G. Andreu, associate professor of forest systems; Melissa H. Friedman, former biological scientist; Mary McKenzie, former research assistant; and Heather V. Quintana, former research assistant; School of Forest, Fisheries, and Geomatics Sciences; UF/IFAS Extension, Gainesville, FL 32611.



Figure 1. Leaf of *Quercus laevis* showing the fall colors.
Credits: Mary Keim, CC BY-NC-SA 2.0

Applications

Commercial/Practical

Generally, the quality of turkey oak wood is low, and it has little commercial value. However, when properly seasoned turkey oak is used for firewood and is a main source of such for many barbecue restaurants. Tannins from the bark and twigs have also been used to stain or tan leather.

Horticultural

Turkey oak is a useful specimen to have in the yard or landscape if providing food for wildlife is a goal. It is drought tolerant, making it ideal for homeowners interested in planting trees that require less water. In addition, turkey oak is an attractive tree due to its turkey-foot-shaped leaves that turn shades of yellow, orange, and red in the winter. However, because this oak does sprout from underground runners, it should not be planted where this growth habit will be an issue.

Wildlife

Acorns from the turkey oak provide an important food source for black bear, northern bobwhite quail, white-tailed deer, small mammals, and wild turkey.

References

- Austin, D. F. 2004. *Florida ethnobotany*. Boca Raton, FL: CRC Press.
- Borrer, D. J. 1988. *Dictionary of root words and combining forms* (1st ed.). Mountain View, CA: Mayfield Publishing Company.
- Duryea, M. and E. Kampf. 2007. *Selecting Southeastern Coastal Plain tree species for wind resistance* (FOR118). Gainesville, FL: UF-IFAS Florida Cooperative Extension Service. Retrieved from <https://edis.ifas.ufl.edu/fr174>
- Floridata.com. 2003. *Quercus laevis*, Retrieved from http://www.floridata.com/ref/Q/quer_lae.cfm
- Gledhill, D. 1989. *The names of plants* (2nd ed.). Cambridge: Press Syndicate of the University of Cambridge.
- Godfrey, R. K. 1988. *Trees, shrubs, and woody vines of Northern Florida and adjacent Georgia and Alabama*. Athens, GA: The University of Georgia Press.
- Harlow, R. F. 1990. *Quercus laevis*. In R. M. Burns, B. H. Honkala and Technical Coordinators (Eds.), *Silvics of North America: Volume 2. hardwoods*: USDA Forest Service, Agricultural Handbook 654.
- Kurz, H. and R. K. Godfrey. 1993. *Trees of Northern Florida*. Gainesville, FL: University Press of Florida.
- Little, E. L. 2005. *National Audubon Society field guide to trees, Eastern region*. New York, NY: Alfred A. Knopf, Inc.
- Nelson, G. 1994. *The trees of Florida: A reference and field guide*. Sarasota, FL: Pineapple Press.
- Ogren, T. L. 2000. *Allergy-free gardening: The revolutionary guide to healthy landscaping*. Berkeley, CA: Ten Speed Press.
- Stein, J., D. Binion, and R. Acciavatti. 2003. *Field guide to native oak species of Eastern North America*. Morgantown, WV: USDA Forest Service.

City of Jacksonville

Tree Commission

Financial Highlights

April 30, 2025

1. Combined Revenues for Fiscal YTD are \$4.91M compared to \$3.43M Apr-24. An increase of \$1.48 year-on-year.
2. Combined Expenses for Fiscal YTD are \$2.35M compared to \$3.58M on Apr-24. A decrease of \$1.23M year-on-year.
3. Combined Revenues for Apr-25 were \$1.13M compared to \$551.9K for Apr-24, an increase of \$576.8K. Meanwhile, expenses were \$425.2K and \$404.6K on Apr-25 and Apr-24, respectively.
4. Total unallocated funds were \$25.21M for Apr-25.

City of Jacksonville
Tree Commission
Financials Combined
Balance Sheet
April 30, 2025

Cash	38,458,179.73
-------------	---------------

Accounts Payable	274,283.00
Other Adjustments	-

Fund Balance	
Beginning Fund Balance	35,621,970.65
YTD Gain\Loss	2,561,926.08
Adjusted Fund Balance	<u>38,183,896.73</u>

Available Balance Calculation

Cash	38,458,179.73	Bank Funds
Less:		
AP	274,283.00	
Other Adjustments	-	
Funds Available	8,776,841.97	Appropriated Funds by City Council
Encumbrances (Open POs)	4,192,309.97	Appropriated and Allocated
Sub-Total Adjustments	<u>13,243,434.94</u>	

Unappropriated/Unallocated	<u>25,214,744.79</u>	Funds 15304 & 15305
-----------------------------------	----------------------	---------------------

BJP Unallocated Funds	<u>-</u>	Better Jacksonville Plan * Funds Available Moved to County-Wide Tree Prog
------------------------------	----------	--

* Better Jacksonville funds were appropriated to
Activity 378 - County Wide Tree Prog Right of Way
Not in Ordinance Fund.

City of Jacksonville
Tree Commission
Financials Combined
Statement of Activity
April 30, 2025

	Actuals		Budget
	30-Apr	YTD	
Revenues			
Ordinance appropriation			530,506.00
Tree Mitigation Funds - Article 25	150,475.00	521,313.00	
Investment Pool Earnings	-	622,713.55	
Contributions From Private Sources	978,164.00	3,741,983.00	
Misc Sales and Charges	-	-	
Contribution-Loss Deductible	-	25,237.99	
Transfer from fund balance	-	-	
Total	1,128,639.00	4,911,247.54	530,506.00
Expenses			
Summarized expenses	425,186.11	2,349,321.46 *	12,818,473.40
Net	703,452.89	2,561,926.08	(12,287,967.40)

* Budget is comprised of
current year budget and
prior year carry forward.

City of Jacksonville
Tree Commission
Ordinance - 15304 - Tree Protection & Related Expenditures
Balance Sheet
April 30, 2025

<u>Equity in Pooled Cash</u>	27,632,189.71
<u>Accounts Payable</u>	274,283.00
<u>Other Adjustments</u>	-
<u>Fund Balance</u>	
Beginning Fund Balance	25,306,786.95
YTD Gain\Loss	2,051,119.76
Adjusted Fund Balance	<u>27,357,906.71</u>
 <u>Available Balance Calculation</u>	
Cash	27,632,189.71
Less:	
AP	274,283.00
Other Adjustments	-
Funds Available(Budget)	6,673,688.11
Encumbrances (Open POs)	3,931,084.63
Sub-Total Adjustments	<u>10,879,055.74</u>
Unappropriated/Unallocated	<u><u>16,753,133.97</u></u>

City of Jacksonville
Tree Commission
Ordinance - 15304 - Tree Protection & Related Expenditures
Statement of Activity
April 30, 2025

	<u>30-Apr</u>	<u>YTD</u>	<u>Budget</u>
Revenues			
Ordinance appropriation			530,506.00
Tree Mitigation Funds - Article 25	20,000.00	51,346.00	
Investment Pool Earnings	-	446,253.43	
Contributions From Private Sources	978,164.00	3,741,983.00	
Misc Sales and Charges	-	-	
Contribution-Loss Deductible	-	25,237.99	
Total Revenue	<u>998,164.00</u>	<u>4,264,820.42</u>	<u>530,506.00</u>
Expenses			
Expenses	394,019.74	2,213,700.66	12,818,473.40
Net	<u>604,144.26</u>	<u>2,051,119.76</u>	<u>(12,287,967.40)</u>

City of Jacksonville
Tree Commission
Charter - 15305- Tree Mitigation & Related Expenditures
Balance Sheet
April 30, 2025

<u>Equity in Pooled Cash</u>	10,825,990.02
-------------------------------------	---------------

<u>Accounts Payable</u>	-
--------------------------------	---

<u>Fund Balance</u>	
Beginning Fund Balance 10/1/24	10,315,183.70
YTD Gain\Loss	<u>510,806.32</u>
Adjusted Fund Balance	<u>10,825,990.02</u>

Available Balance Calculation	
Cash	10,825,990.02
Less:	
AP	-
Funds Available	2,103,153.86
Encumbrances (Open POs)	<u>261,225.34</u>
Sub-total	<u>2,364,379.20</u>

Unappropriated/Unallocated	<u><u>8,461,610.82</u></u>
-----------------------------------	----------------------------

City of Jacksonville
Tree Commission
Charter - 15305- Tree Mitigation & Related Expenditures
Statement of Activity
April 1, 2025

	<u>Actuals</u>		<u>Budget</u>
	<u>30-Apr</u>	<u>YTD</u>	
Revenues			-
Tree Mitigation Funds - Article 25	130,475.00	469,967.00	
Investment Pool Earnings	-	176,460.12	
	<u>130,475.00</u>	<u>646,427.12</u>	
Expenses			
Trust Fund Authorized Expenditures	31,166.37	135,620.80	-
Net	<u>99,308.63</u>	<u>510,806.32</u>	<u>-</u>

jaxtreemitigation.coj.net

Verify it's you


HomeTree MitigationTree CommissionAbout

Welcome Guest (Visitor)Log in



TREE MITIGATION

CITY OF JACKSONVILLE





TREE REMOVAL PERMIT INFORMATION

Click here to search detailed information on Site Clearing and Tree Removal Permits. In reviewing tree removal information on a specific permit, for "B" permits click on the Spec 2 tab; for "L" permits click on the Tree Mitigation tab.




TREE FUND CITY PLANTING PROJECTS

Click here to search detailed information about City Tree Fund Planting Projects.




AVAILABLE FOR APPROPRIATION

15F (Ordinance): \$16,753,133.97
15N (Charter): \$8,461,610.82
Total: \$25,214,744.79



FILE AN ISSUE

Click here to report site clearing or tree removal without a permit, or to request tree maintenance on public property. In the CARE System, select "Tree Remove or Landscape Violation" from the dropdown.

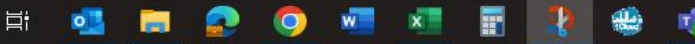


If you experience difficulty viewing or accessing the documents provided on this site, or navigating this application's table features, using any assistive technology please contact the Disabled Services Division at 904-630-4940 or 904-630-4933 (TTY) to request an accommodation.

© 2025 - Official City of Jacksonville and Duval County Government Website, All Rights Reserved.

Version: 1.0.0.6

Type here to search



85°F Mostly sunny

2:22 PM 5/1/2025

8 of 8

AVAILABLE FOR APPROPRIATION (a)

15304 (15F)	Ordinance	\$ 17,297,712.63
15305 (15N)	Charter	\$ 8,508,123.80
		<u>\$ 25,805,836.43</u>

<u>FY24 Revenues:</u>	<u>15304 (15F)</u>	<u>15305 (15N)</u>
May	\$ 498,969.05	\$ 116,474.24
June	\$ 277,145.24	\$ 62,006.36
July	\$ 575,491.91	\$ 124,329.19
August	\$ 473,477.12	\$ 259,575.22
September	\$ 859,003.34	\$ 128,993.97

<u>FY25 Revenues:</u>		
October	\$ 478,603.00	\$ 89,080.00
November	\$ 574,360.12	\$ 71,839.60
December	\$ 496,845.39	\$ 114,108.17
January	\$ 257,231.09	\$ 66,201.11
February	\$ 559,517.00	\$ 71,469.06
March	\$ 900,099.82	\$ 103,254.18
April	\$ 1,115,970.47	\$ 167,494.98

<u>FY24 Expenses:</u>	<u>15304 (15F)</u>	<u>15305 (15N)</u>
May	\$ 428,409.97	\$ -
June	\$ 820,717.65	\$ -
July	\$ 389,709.43	\$ -
August	\$ 360,522.52	\$ -
September	\$ 360,843.20	\$ -

<u>FY25 Expenses:</u>		
October	\$ 30,938.21	\$ -
November	\$ 279,657.16	\$ 98,945.17
December	\$ 357,285.21	\$ -
January	\$ 283,809.67	\$ 5,509.26
February	\$ 684,299.22	\$ -
March	\$ 183,691.45	\$ 82,900.00
April	\$ 399,875.13	\$ 31,166.37

	<u>15304 (15F)</u>	<u>15305 (15N)</u>
Funds Available (b)	\$ 6,228,980.08	\$ 2,033,953.86
Obligations (c)	\$ 4,232,163.71	\$ 330,425.34

THE BIG 4

<u>Title</u>	<u>Obligations</u>	<u>Funds Available</u>
Level 2 Tree Planting Program - Fund 15304 (d)	\$ 2,376,473.26	\$ 1,401,724.67
Level 2 Tree Planting Program - Fund 15305 (d)	\$ 176,948.02	\$ 1,224,106.81
Level 3 Tree Planting Program - Fund 15304 (d)	\$ 1,316,974.36	\$ 2,360,674.24
Remove/Replace - Fund 15304 (e)	\$ 409,624.90	\$ 174,737.05
Remove/Replace - Fund 35101 (e)	\$ 645,738.05	\$ -
Remove/Replace - Fund 15305 (e)	\$ 153,477.32	\$ 809,847.05
630-CITY Tree Planting Program - Fund 15304 (e)	\$ 90,359.04	\$ 2,115,236.02

Prepared 5/13/25 LD

The City of Jacksonville has two separate laws that provide protection for certain trees and require mitigation for damage or removal of certain trees caused by the process of land development. Mitigation is required either through planting or replanting of a calculated amount of mitigation trees or through making a specified payment into the Tree Protection and Related Expenses Trust Fund codified by Sec. 111.760, Ordinance Code. These laws are Article 25 of the Charter of the City of Jacksonville and Chapter 656, Part 12, Subparts A & B of the Ordinance Code. Each provision has specific criteria for what is characterized as a "protected tree" and thus would require replacing through the development process of a site, or if a replacement is not made, how the "mitigation fee" is calculated for removal of trees without replacement. The mitigation fee that is paid by developers who are unable to replace the trees destroyed during construction, as required by both provisions, is placed in the Tree Protection and Related Expenses Trust Fund. Moreover, funds received from application of the Charter are held in Fund 15305 and funds received from application of the Ordinance Code are held in the Fund 15304.

Jacksonville Tree Commission

Available Funds Summary (as of May, 2025)

	Apr-25	May-25
15F Ordinance Funds Available for Council Appropriation (a)	\$15,620,406.15	\$16,753,133.97
Allocated for Remove and Replace to Public Works (b)	\$1,146,374.13	\$1,056,310.21
Allocated for 630-City to Public Works (c)	\$2,115,236.02	\$2,115,236.02
Available for Level 2 Allocation by Tree Commission (d)	\$3,143,786.84	\$3,037,284.24
Available for Level 3 Allocation by Tree Commission (e)	\$2,360,674.24	\$2,360,674.24
Total Allocated to PW for 630-City and Remove & Replace (b) + (c)	\$3,261,610.15	\$3,171,546.23
Total Available for Allocation by Tree Commission (d) + (e)	\$5,504,461.08	\$5,397,958.48
15N Charter Funds Available for Council Appropriation (f)	\$8,291,461.64	\$8,461,610.82
BJP Tree Mitigation Dollars available for Council Appropriation (g)	\$0.00	\$0.00
Total Avail for Appropriation by Council (a) + (f) + (g)	\$23,911,867.79	\$25,214,744.79
Total Avail for Allocation by Tree Commission (d) + (e)	\$5,504,461.08	\$5,397,958.48
Total Funds Not Obligated	\$32,677,939.02	\$33,784,249.50

Encumbered Funds Summary (as of May, 2025)

	Apr-25	May-25
Obligated Level 2 Proj Funds	\$2,357,310.89	\$2,245,138.17
Obligated Level 3 Proj Funds	\$1,316,974.36	\$1,316,974.36
Total Funds Obligated	\$3,674,285.25	\$3,562,112.53

Since 2017

15F Remove and Replace

15304 Ordinance Funds Available for Appropriation: As of 05/01/2025 there is \$16,753,133.97

Appropriated	Date	Project	Purchase Order Amount	Date	Remainder	Status
\$300,000.00	Nov-18					
\$2,000,000.00	Nov-19					
\$2,000,000.00	Apr-21					
\$4,000,000.00	Dec-22					
		Parks Replacement (FY24)	\$500,000.00	11/27/2023	\$61,591.00	Open
		Round 19	\$52,900.00	11/15/2023	\$5,290.00	Open
		Baymeadows R&R	\$169,819.05	12/21/2023	\$25,472.86	Open
		Round 20	\$63,000.00	1/19/2024	\$6,300.00	Open
		Old Saint Augustine R&R	\$55,877.46	2/14/2024	\$8,381.62	Open
		Round 22	\$27,425.81	3/16/2024	\$5,485.16	Open
		Fort Caroline R&R	\$185,252.23	3/28/2024	\$27,787.84	Open
		2024-03	\$90,400.00	5/2/2024	\$18,080.00	Open
		Greenland Road R&R	\$101,044.45	5/8/2024	\$15,156.67	Open
		2024-04	\$108,600.00	5/14/2024	\$21,720.00	Open
		Parks Remove and Replace (FY 25 Renovals)	\$100,000.00	3/5/2025	\$100,000.00	Open
		Parks Remove and Replace (FY 25 Replacements)	\$100,000.00	4/4/2025	\$65,680.00	Open
		Remove and Replace Old Saint Augustine @ I-95	\$42,341.33	4/9/2025	\$42,341.33	Open
		Remove and Replace Golfair JSEB Office	\$4,414.50	4/9/2025	\$4,414.50	Open
		University and Merrill Remove and Replace	\$7,163.92	4/18/2025	\$7,163.92	Open
\$8,300,000.00	Total	Total	\$8,879,393.11	Total	\$414,864.90	
				Available for 15F Remove and Replace Allocation	\$177,263.16	

Definitions of Terms

Available for Appropriation- Requires City Council Approval

Allocated- Already been approved by City Council/Tree Commission and MBRC approved funds

Obligation- Funds have been assigned to a project and a purchase order has been issued

Green fill indicates amount available in pool of money

Orange fill indicated total money for column

Since 2017

15N Remove and Replace

15305 Charter Funds Available for Appropriation: As of 05/01/2025 there is \$8,461,610.82

Appropriate	Date	Project	Purchase Order Amount	Date	Remainder	Status
\$1,000,000.00	Jun-24					
		Gator Bowl R&R	\$6,886.58	10/28/2024	\$1,377.32	Open
		R&R 2025-01	\$82,900.00	4/11/2025	\$82,900.00	Open
\$1,000,000.00	Total	Total	\$120,952.95	Total	\$84,277.32	
				Available for 15N Remove and Replace Allocation	\$879,047.05	

Definitions of Terms

Available for Appropriation- Requires City Council Approval

Allocated- Already been approved by City Council/Tree Commission and MBRC approved funds

Obligation- Funds have been assigned to a project and a purchase order has been issued

Green fill indicates amount available in pool of money

Orange Fill indicated total money for column

Since 2017

BJP Remove and Replace

Better Jacksonville Plan- Tree Mitigation Dollars available for Appropriation: As of 05/01/2025 there is \$0

Appropriated	Date	Project	Purchase Order Amount	Date	Remainder	Status
\$1,717,826.00	Jun-24					
		Courthouse R&R	\$2,295.54	8/9/2024	459.12	Open
		Main Street R&R	\$369,995.86	8/9/2024	\$73,999.17	Open
		Shindler and Rampart R&R	\$74,564.42	11/15/2024	\$14,912.88	Open
		Parks Remove and Replace Removals	\$334,457.97	12/3/2024	\$38,588.79	Open
		PWML Remove and Replace Removals	\$400,000.00	12/3/2024	\$331,147.09	Open
		Monument and Cobblestone R&R	\$173,283.67	1/9/2025	\$34,656.73	Open
		Southeast Regional Library	\$57,231.54	1/17/2025	\$11,446.31	Open
		Hodges Blvd R&R	\$112,120.86	2/11/2025	\$28,657.45	Open
		1st St R&R	\$102,509.54	2/27/2025	\$20,501.91	Open
		City Hall Remove and Replace	\$91,366.60	2/28/2025	\$91,366.60	Open
\$1,717,826.00	Total	Total	\$1,717,826.00	Total	\$645,736.05	
					Available for BJP Remove and Replace Allocation	\$0.00

Definitions of Terms

Available for Appropriation- Requires City Council Approval

Allocated- Already been approved by City Council/Tree Commission and MBRC approved funds

Obligation- Funds have been assigned to a project and a purchase order has been issued

Green fill indicates amount available in pool of money

Orange Fill indicated total money for column

Since 2017

630-City

15304 Ordinance Funds Available for Appropriation: As of 05/01/2025 there is \$16,753,133.97

Appropriated	Date	Project	Purchase Order Amount	Date	Remainder	Status
\$200,000.00	Nov-18					
\$1,600,000.00	Aug-19					
\$2,000,000.00	Jan-25					
\$2,000,000.00	Jan-20					
\$2,000,000.00	Dec-22					
		630-City Round 21	\$74,140.80	2/2/2024	\$14,828.16	Open
		630-City Round 22	\$126,345.60	6/28/2024	\$25,269.12	Open
		630-City Round 23	\$100,258.80	11/22/2024	\$20,051.76	Open
		630-City Round 24	\$30,210.00	2/7/2025	\$30,210.00	Open
\$7,800,000.00	Total	Total	\$4,739,278.02	Total	\$90,359.04	
				Available for 630-City Allocation	\$2,115,236.02	

Definitions of Terms

Available for Appropriation- Requires City Council Approval

Allocated- Already been approved by City Council/Tree Commission and MBRC approved funds

Obligation- Funds have been assigned to a project and a purchase order has been issued

Green fill indicates amount available in pool of money

Orange Fill indicated total money for column

Since 2017**15F Level 2**

15304 Ordinance Funds Available for Appropriation: As of 05/01/2025 there is \$16,753,133.97

Appropriated	Date	Project	Allocation	Date	Purchase Order Amount	Date	Remainder	Status
\$1,000,000.00	Feb-19							
\$2,000,000.00	Jan-20							
\$2,000,000.00	Jan-21							
\$2,000,000.00	Aug-21							
\$8,000,000.00	Jun-22							
		Park Street Rd Diet	\$399,526.00	6/16/2021	\$399,526.00	8/24/2021	\$399,526.00	On Hold
		Saint Johns Bluff Rd	\$388,238.50	7/20/2022	\$388,238.50	8/29/2022	\$38,823.84	Open
		Airport Center Drive East	\$153,643.00	11/16/2022	\$153,643.00	12/29/2022	\$7,682.15	Open
		GoldStar Phase 2	\$2,300,000.00	12/21/2022	\$1,141,500.00	7/14/2023	\$171,225.00	Open
		Fort Caroline Rd						
		Pond	\$61,479.00	2/15/2023	\$61,479.00	3/21/2023	\$3,073.95	Open
		Kernan BLVD N	\$591,059.00	2/15/2023	\$591,059.00	3/23/2023	\$59,105.90	Open
		Price Park	\$27,216.00	4/19/2023	\$27,216.00	5/11/2023	\$1,360.80	Open
		Amelia View Phase 2	\$62,370.00	4/19/2023	\$62,370.00	5/11/2023	\$3,118.50	Open
		Gator Bowl	\$41,185.00	7/19/2023	\$41,185.00	8/10/2023	\$4,118.50	Open
		7th Street E	\$88,355.00	8/16/2023	\$88,355.00	9/14/2023	\$8,835.50	Open
		District 7 and 10 Corridors	\$75,451.50	9/20/2023	\$75,451.50	11/11/2023	\$7,545.14	Open
		Hodges Blvd	\$137,667.34	10/18/2023	\$137,667.34	12/14/2023	\$13,766.73	Open
		Lift Ev'ry Voice and Sing Park	\$223,335.00	11/15/2023	\$223,335.00	1/10/2024	\$44,667.00	Open
		Parks Senior and Community Centers	\$172,450.00	1/17/2024	\$172,450.00	4/2/2024	\$34,510.00	Open
		Southern S-Line Enhancement	\$131,600.00	1/17/2024	\$131,600.00	4/2/2024	\$26,320.00	Open
		McGirts Creek Preserve Restoration (Planting)	\$182,750.00	1/17/2024	\$182,750.00	4/2/2024	\$182,750.00	Open

15F Level 2

15304 Ordinance Funds Available for Appropriation: As of 05/01/2025 there is \$16,753,133.97

Appropriated	Date	Project	Allocation	Date	Purchase Order Amount	Date	Remainder	Status
		McGirts Creek Preserve Restoration (Consulting)	\$82,250.00	1/17/2024	\$82,250.00	8/23/2024	\$82,250.00	Open
		Various Parks	\$136,800.00	4/17/2024	\$136,800.00	5/29/2024	\$54,720.00	Open
		Alden Road	\$76,282.56	6/28/2024	\$76,282.56	7/11/2024	\$15,256.51	Open
		JTA Bus Stops Phase 1	\$34,533.86	7/17/2024	\$34,533.86	9/10/2024	\$6,906.77	Open
		State Street Plan	\$298,769.36	9/18/2024	\$298,769.36	10/31/2024	\$211,356.23	Open
		Gonzales Park	\$106,397.74	11/20/2024	\$106,397.74	12/16/2024	\$21,279.55	Open
		Murray Hill	\$33,119.53	11/20/2024	\$33,119.53	12/13/2024	\$6,623.91	Open
		Merrill Road	\$7,998.33	11/20/2024	\$7,998.33	12/13/2024	\$1,599.67	Open
		Walter Anderson Park	\$10,700.00	11/20/2024	\$10,700.00	1/13/2025	\$10,700.00	Open
		Touchton Road Park	\$85,400.00	11/20/2024	\$85,400.00	1/13/2025	\$34,160.00	Open
		Maxville Park	\$219,325.00	11/20/2024	\$219,325.00	1/13/2025	\$87,730.00	Open
		Julington Durbins Preserve	\$52,950.00	11/20/2024	\$52,950.00	1/13/2025	\$52,950.00	Open
		Greenland Park	\$86,475.00	11/20/2024	\$86,475.00	1/13/2025	\$34,590.00	Open
		Glynlea Park	\$81,000.00	11/20/2024	\$81,000.00	1/13/2025	\$81,000.00	Open
		Genovar Park	\$56,900.00	11/20/2024	\$56,900.00	1/13/2025	\$56,900.00	Open
		Black Hammock Island Park	\$94,150.00	11/20/2024	\$94,150.00	1/13/2025	\$37,660.00	Open
		Backridge Park	\$51,575.00	11/20/2024	\$51,575.00	1/13/2025	\$20,630.00	Open
		Atlantic Blvd	\$45,379.20	12/18/2024	\$45,379.20	1/31/2025	\$9,075.84	Open
		Palmetto Leaves Park	\$152,650.00	12/18/2024	\$152,650.00	2/11/2025	\$61,060.00	Open
		Five Points	\$35,226.79	2/19/2025	\$35,226.79	4/4/2025	\$35,226.79	Open
		Jacksonville Zoo Level 2	\$52,255.97	2/19/2025	\$52,255.97	4/4/2025	\$52,255.97	Open
		Amelia View Phase 3	\$1,986.53	2/19/2025	\$1,986.53	4/4/2025	\$1,986.53	Open
		Pearl St	\$38,872.69	3/19/2025	\$38,872.69	4/23/2025	\$38,872.69	Open
		Neptune Beach Phase 1	\$46,970.28	3/19/2025	\$46,970.28	4/23/2025	\$46,970.28	Open
\$15,000,000.00	Total	Total	\$15,355,836.95	Total	\$12,594,395.17	Total	\$1,928,104.68	

15F Level 2

15304 Ordinance Funds Available for Appropriation: As of 05/01/2025 there is \$16,753,133.97

Appropriated Date	Project	Allocation	Date	Purchase Order Amount	Date	Remainder	Status
					Available for 15F Level 2 Allocation	\$1,813,177.43	

Definitions of Terms

Available for Appropriation- Requires City Council Approval

Allocated- Already been approved by City Council/Tree Commission and MBRC approved funds

Encumbered- Funds have been assigned to a project and a purchase order has been issued

Green fill indicates amount available in pool of money

Orange Fill indicated total money for column

Since 2017

15N Level 2

15305 Charter Funds Available for Appropriation: As of 05/01/2025 there is \$8,461,610.82

Appropriated	Date	Project	Allocation	Date	Purchase Order Amount	Date	Remainder	Status
\$1,500,000.00	Jun-24							
		Gate Parkway	\$123,681.46	7/17/2024	\$123,681.46	10/24/2024	\$24,736.29	Open
		Amelia View Phase 3	\$42,644.07	2/19/2025	\$42,644.07	4/4/4025	\$42,644.07	Open
		Jacksonville Zoo Level 2	\$88,908.03	2/19/2025	\$88,908.03	4/4/2025	\$88,908.03	Open
		Pearl Street Level 2	\$13,243.50	3/19/2025	\$13,243.50	4/23/2025	\$13,243.50	Open
		Neptune Beach Phase 1	\$7,416.13	3/19/2025	\$7,416.13	4/23/2025	\$7,416.13	Open
\$1,500,000.00	Total	Total	\$275,893.19	Total	\$268,477.06	Total	\$169,531.89	
							Available for 15N Level 2 Allocation	\$1,224,106.81

Definitions of Terms

Available for Appropriation- Requires City Council Approval

Allocated- Already been approved by City Council/Tree Commission and MBRC approved funds

Encumbered- Funds have been assigned to a project and a purchase order has been issued

Green fill indicates amount available in pool of money

Orange Fill indicated total money for column

Since 2017

Level 3

15304 Ordinance Funds Available for Appropriation: As of 05/01/2025 there is \$16,753,133.97

Appropriated Date	Project	Allocation	Date	Purchase Order Amount	Date	Remainder	Status
\$1,000,000.00	May-20						
\$1,000,000.00	Dec-22						
\$2,000,000.00	Jun-24						
	Jax Zoo	\$209,190.35	3/4/2021	\$209,190.35	10/27/2021	\$105,728.15	Open
	RiversEdge	\$1,211,246.21	3/20/2024	\$1,211,246.21	11/18/2024	\$1,211,246.21	Open
\$4,000,000.00	Total	\$1,662,035.56	Total	\$450,749.35	Total	\$1,316,974.36	
							Available for Level 3 Allocation
							\$2,360,674.24

Definitions of Terms

Available for Appropriation- Requires City Council Approval

Allocated- Already been approved by City Council/Tree Commission and MBRC approved funds

Obligation- Funds have been assigned to a project and a purchase order has been issued

Green fill indicates amount available in pool of money

Orange Fill indicated total money for column

Completed CITY OF JACKSONVILLE LEVEL 2 TREE PLANTING PROJECTS

ATTACHMENT B

Visit <https://pg-cloud.com/JacksonvilleFL/> for City of Jacksonville Tree Project Maps
Visit jaxtreemitigation.coj.net - Tree Fund City Projects for links to legislation and planting details

Requesting Entity	Project Scope	Tree Commission Approval Date	Status	Approp.	Obligated	Contract/Warranty
Executive Director, Tree Hill Nature Center	22 trees requested in Tree Hill amphitheater parking area; site plan complete; no removals required; ready for review pending cost estimate per new countywide tree planting contract.	May-19	Complete	\$21,472.80	\$21,472.80	Liberty 3/mos
Sheffield Elementary School PTA President	10 Trees requested to provide shade for existing play area/field at Sheffield Elementary School; site visit complete - pending design and review.	May-19	Complete	\$20,414.48	\$20,414.48	Davey -1/yr
San Marco Preservation Society and Greenscape, San Marco Tree Planting	102 Trees requested in city right of ways within District 5, includes removal of damaged/diseased trees; site evaluation scheduled	Jun-19	Complete	\$247,749.52	\$247,749.52	Davey -1/yr
Kensington Association HOA Director	54 trees requested within Kensington Lakes city right of ways along Kensington Gardens Blvd. and Kensington Lakes Dr to replace trees lost due to storm damage/disease; may include removals. Planting Plan pending.	Aug-19	Complete	\$124,202.62	\$124,202.62	Davey -1/yr
S-Line Biodiversity Corridor Tree Planting	Installation of 25 trees throughout the S-Line Trail Biodiversity Corridor. This will offer additional tree canopy and shade to the trail.	Aug-19	Complete	\$30,949.40	\$30,949.40	Liberty 3/mos
City Cemetery - citizen request	18 Trees in right of ways on Ionia St. and Jessie St.	Dec-19	Complete	\$41,350.50	\$41,350.50	Liberty 2/yr
Baymeadows East Association Tree Planting	119 Trees in right of ways and medians on Baymeadows East and Fort Family Regional Park	Dec-19	Complete	\$284,900.07	\$284,900.07	Davey -1/yr
Cathedral District Tree Planting	50+ trees requested as Cathedral District (CD7) tree planting, may include removal of damaged/diseased trees. City right of way tree plantings within general proximity but not limited to State St to Catherine St. to Main St. to Adams St.; site evaluation scheduled	Jan-20	Complete	\$120,371.14	\$120,371.14	Liberty 2/yr
Yates Building - Cultural Council of Greater Jacksonville	8 Trees to be installed around renovated fountain at building entrance	Jan-20	Complete	\$38,312.00	\$38,312.00	Liberty 2/yr
Ed Austin Park Tree Planting/Resident request	115 Trees in right of ways around and within Willowbranch Park	Jun-20	Complete	\$214,822.00	\$214,822.00	Liberty 2/yr
Neptune Beach/Residential requests - City of Neptune	Trees within residential Right of Ways - 47 trees	Jul-20	Complete	\$55,490.00	\$55,490.00	Liberty 3/mos
Nathan Krestul Park - Friends of Krestul Park	Trees within Park - 34 trees	Jul-20	Complete	\$63,423.00	\$63,423.00	Liberty 2/yr

Completed CITY OF JACKSONVILLE LEVEL 2 TREE PLANTING PROJECTS

ATTACHMENT B

Visit <https://pg-cloud.com/JacksonvilleFL/> for City of Jacksonville Tree Project Maps
Visit jastreemitigation.coj.net - Tree Fund City Projects for links to legislation and planting details

Requesting Entity	Project Scope	Tree Commission Approval Date	Status	Approp.	Obligated	Contract/Warranty
Alexandria Oaks Park/SMPS and Bolles School request	Trees within Park - 15 trees	Jul-20	Complete	\$28,593.00	\$28,593.00	Liberty 2/yr
Huntington Forest Park/Resident request to CM	Trees along Park Right of Way - Buffer - 15 trees	Jul-20	Complete	\$28,026.00	\$28,026.00	Liberty 2/yr
Canopy Place Tree Planting/resident request	Installation of 40 trees in city right of ways and medians to provide additional tree canopy, sound buffer and screening.	Oct-20	Complete	\$117,483.97	\$117,483.97	Davey -1/yr
Sunrise Ridge/resident request	Installation of 40 tree in city right of ways to increase tree canopy as well screening and buffer from adjacent highway.	Oct-20	Complete	\$107,316.52	\$107,316.52	Davey -1/yr
Jacksonville Beach Golf Park/Jax Beach	Installation of 156 trees in city golf course park to increase tree canopy, create screening, and attract wildlife.	Nov-20	Complete	\$147,562.80	\$147,562.80	Liberty 3/mos
Freedom Park/CM & Parks	Trees within newly established park (irrigated) - 38 trees	Dec-20	Complete	\$38,548.00	\$38,548.00	Liberty 3/mos
Blue Cypress Park Restoration/Parks	Trees within park - field restoration - 157 trees	Mar-21	Complete	\$187,154.40	\$187,154.40	Liberty 1/yr
Atlantic Beach/City of Atlantic Beach Phase 2	Trees within Atlantic Beach residential Right of Ways and Parks - 133 trees	May-21	Complete	\$164,404.80	\$164,404.80	Liberty 3/mos
Cobblestone Homeowners Association/residential requests/HOA	Installation of 105 trees in city right of ways and medians to provide additional tree canopy, sound buffer and screening.	Jun-20	Complete	\$192,922.00	\$192,922.00	Liberty 2/yr

ACTIVE CITY OF JACKSONVILLE LEVEL 2 TREE PLANTING PROJECTS

ATTACHMENT F

Visit <https://pg-cloud.com/JacksonvilleFL/> for City of Jacksonville Tree Project Maps

Visit jaxtreemitigation.coj.net - Tree Fund City Projects for links to legislation and planting details

Requesting Entity	Project Scope	Tree Commission Approval Date	Status	Allocated Amount	Contract/Warranty
Saint Johns Bluff Road	Trees along Median. 189 trees	Jul-22	Installation Complete	\$388,238.50	Liberty 2/yr
Airport Center Drive E	Trees along median. 76 trees	Nov-22	Installation Complete	\$153,643.00	Liberty 2/yr
Gold Star Family Memorial Highway Phase 2	Trees within retention ponds and right of way. 1218 trees	Dec-22	Installation Complete	\$2,300,000.00	To Bid 2/yr
Fort Caroline Road Pond	Trees within retention pond. 34 trees	Feb-23	Installation Complete	\$61,479.00	Liberty 2/yr
Kernan Blvd N	Trees within Right of way and Median- 276 trees	Feb-23	Installation Complete	\$591,059.00	Liberty 2/yr
Price Park	Trees within Right of way. 13 trees	Apr-23	Installation Complete	\$27,216.00	Liberty 2/yr
Amelia View Phase 2	Trees within Right of Way. 34 trees	Apr-23	Installation Complete	\$62,370.00	Liberty 2/yr
GatorBowl	Trees in Median. 8 trees	Jul-23	Installation Complete	\$41,185.00	Liberty/2yr
7th Street East	Trees in right of way (42 trees)	Aug-23	Installation Complete	\$41,185.00	Liberty/2yr
District 7 and 10 Corridors	Trees in right of way (39 trees)	Sep-23	Installation Complete	\$75,451.50	Liberty/2yr
Hodges Blvd Level 2	Trees in Median (59 trees)	Oct-23	Installation Complete	\$137,667.34	Liberty/2yr
McGirts Creek Restoration Level 2	In Preserve (12,000 saplings)	Jan-24	Scheduling	\$182,750.00	Greenway/no warranty
Lift Ev'ry Voice and Sing Park Level 2	In Park (90 trees)	Nov-23	Installation Complete	\$233,335.00	Greenway/1yr
Northbank Riverwalk Phase 2	36 trees	Jan-24	Installation Complete	\$76,642.50	Greenway/1yr
Parks Senior and Community Centers	81 trees	Jan-24	Installation Complete	\$172,450.00	Greenway/1yr
Southern S-Line Enhancement	140 trees along S-line	Jan-24	Installation Complete	\$131,600.00	Greenway/1yr
Various Parks	98 Trees in Parks	Apr-24	Installation Complete	\$136,800.00	Greenway/1yr
Alden Road	41 Trees along ROW	May-24	Installation Complete	\$76,282.56	Liberty 2/yr
Gate Parkway	49 Trees in median and ROW	Jul-24	Installation Complete	\$123,681.46	Liberty 2/yr
JTA Bus Stops Phase 1	11 trees in ROW	Jul-24	Installation Complete	\$34,533.86	Liberty 2/yr
Merrill Road	4 trees in median	Nov-24	Installation Complete	\$7,998.33	Liberty 2/yr
Murray Hill	14 trees in ROW	Nov-24	Installation Complete	\$33,119.53	Liberty 2/yr
Gonzales Park	within park boundaries 50 trees	Nov-24	Installation Complete	\$106,397.74	Liberty 2/yr
Glynlea Park	within park boundaries 64 trees	Nov-24	Ongoing	\$81,000.00	Greenway/ 1yr
Julington Durbin Preserve	within park boundaries 41 trees	Nov-24	Ongoing	\$52,950.00	Greenway/ 1yr
Backridge Park	within park boundaries 34 trees	Nov-24	Installation Complete	\$51,575.00	Greenway/ 1yr
Walter Anderson Park	within park boundaries 7 trees	Nov-24	Ongoing	\$10,700.00	Greenway/ 1yr

ACTIVE CITY OF JACKSONVILLE LEVEL 2 TREE PLANTING PROJECTS

ATTACHMENT F

Visit <https://pg-cloud.com/JacksonvilleFL/> for City of Jacksonville Tree Project Maps

Visit jactreemitigation.coj.net - Tree Fund City Projects for links to legislation and planting details

Requesting Entity	Project Scope	Tree Commission Approval Date	Status	Allocated Amount	Contract/Warranty
Genovar Park	within park boundaries 42 trees	Nov-24	Ongoing	\$56,900.00	Greenway/ 1yr
Greenland Park	within park boundaries 59 trees	Nov-24	Installation Complete	\$86,475.00	Greenway/ 1yr
Touchton Rd Park	within park boundaries 63 trees	Nov-24	Installation Complete	\$85,400.00	Greenway/ 1yr
Maxville Park	within park and city property boundaries 94 trees	Nov-24	Installation Complete	\$219,325.00	Greenway/ 1yr
Black Island Hammock Park	within park boundaries 60 trees	Nov-24	Installation Complete	\$94,150.00	Greenway/ 1yr
Palmetto Leaves	within park boundaries 103 trees	Dec-24	Installation Complete	\$152,650.00	Greenway/1yr
Atlantic Blvd	Median 20 trees	Dec-24	Installation Complete	\$45,379.20	Liberty 2/yr
Jacksonville Zoo Level 2	On public property on Zoo grounds 64 trees	Feb-25	Ongoing	\$141,164.00	Liberty 2/yr
Amelica View Phase 3	on City Right of way's in neighborhood 22 trees	Feb-25	Ongoing	\$44,630.60	Liberty 2/yr
Five Points Level 2	On City Right of way 15 trees	Feb-25	Ongoing	\$35,226.79	Liberty 2/yr
Neptune Beach Phase 1	on public right of way and park- 21 trees	Mar-25	Ongoing	\$54,386.41	Liberty/2yr
Pearl Street Level 2	on city right of way- 21 trees	Mar-25	Ongoing	\$52,119.19	Liberty/2yr
District 10 Parks	within park boundaries-91 trees	Mar-25	Ongoing	\$135,915.00	Greenway/1yr
Windy Hills Park	within Park boundaries- 36 trees	Mar-25	Ongoing	\$55,205.00	Greenway/1yr
Oceanway Park	within Park boundaries- 37 trees	Mar-25	Ongoing	\$51,000.00	Greenway/1yr
Terrace Park	within Park boundaries- 22 trees	Mar-25	Ongoing	\$30,620.00	Greenway/1yr
Riverview Park	withing Park boundaries- 38 trees	Mar-25	Ongoing	\$49,475.00	Greenway/1yr
Beaver Dam Road Pond	on city right of way- 50 trees	Apr-25	MBRC	\$90,938.70	Liberty/2yr
Glorianne Dr	on city right of way- 5 trees	Apr-25	MBRC	\$11,036.25	Liberty/2yr

Introduced by Council Member J. Carlucci and Co-Sponsored by Council
Member Carlucci and substituted by the Land Use and Zoning Committee:

ORDINANCE 2025-102-E

AN ORDINANCE CONCERNING LANDSCAPE AND TREE
PROTECTION REGULATIONS; AMENDING SECTION
111.760 (TREE PROTECTION AND RELATED EXPENSES
TRUST FUND), PART 7 (ENVIRONMENT AND
CONSERVATION), CHAPTER 111 (SPECIAL REVENUE AND
TRUST ACCOUNTS), *ORDINANCE CODE*, TO AUTHORIZE
EXPENDITURE OF TRUST FUND MONIES FOR SALARY,
BENEFITS, AND EQUIPMENT FOR CITY LANDSCAPE
ARCHITECTS, CITY ARBORISTS, AND CITY URBAN
FORESTERS, SOLELY FOR THE PERFORMANCE OF DUTIES
EXCLUSIVE TO THE DIRECT SUPPORT OF THE PLANNING,
DESIGN, IMPLEMENTATION, INSPECTION AND
MAINTENANCE OF TREE PLANTING PROJECTS FUNDED BY
THE CITY'S TREE FUND IN ACCORDANCE WITH ALL
APPLICABLE LAWS AND RULES PERTAINING TO USE OF
TREE PROTECTION AND RELATED EXPENSES TRUST FUND
FUNDS; AMENDING SECTIONS 656.1206 (PERMIT
PROCEDURE AND CRITERIA FOR TREE REMOVAL,
RELOCATION AND REPLACEMENT OF PROTECTED TREES)
AND 656.1208 (ENFORCEMENT OF THIS SUBPART B;
VIOLATIONS AND PENALTIES; STOPPING WORK,
CORRECTION OF VIOLATION, SETTLEMENT AND
REDUCTION OF FINES PURSUANT TO POLICY CRITERIA;
PROCEDURES), SUBPART B (TREE PROTECTION), PART
12 (LANDSCAPE AND TREE PROTECTION REGULATIONS),
CHAPTER 656 (ZONING CODE), *ORDINANCE CODE*,

1 WAIVING THE TREE MITIGATION CONTRIBUTIONS TO THE
2 TREE PROTECTION AND RELATED EXPENSES TRUST FUND
3 REQUIRED BY SUBSECTION 656.1206(G)(14),
4 *ORDINANCE CODE*, AS AN INCENTIVE BY CITY FOR THE
5 DEVELOPMENT OR REDEVELOPMENT OF AFFORDABLE
6 HOUSING AND/OR WORKFORCE HOUSING AS DEFINED
7 HEREIN, PROVIDING FOR SUNSET OF SAID WAIVER FIVE
8 YEARS FROM THE EFFECTIVE DATE OF THIS
9 LEGISLATION, SUBJECT TO CERTAIN CONDITIONS, AND
10 REDUCING THE MINIMUM CALIPER-INCH REQUIREMENTS
11 FOR REPLACEMENT TREES IN KEEPING WITH PROVISIONS
12 OF ARTICLE 25 OF THE JACKSONVILLE CITY CHARTER;
13 PROVIDING FOR CODIFICATION INSTRUCTIONS;
14 PROVIDING AN EFFECTIVE DATE.

15
16 **WHEREAS**, the City currently maintains two Tree Protection and
17 Related Expenses Trust Funds, the first was created pursuant to
18 Article 25 of the Jacksonville City Charter and the second by
19 Ordinance which is codified in Section 111.760, *Ordinance Code*; and

20 **WHEREAS**, while these Trust Funds are subject to different
21 guidelines and requirements, they both serve the fundamental mission
22 to fund the planting and maintaining of trees along public
23 rights-of-way and on public lands within the City, so as to mitigate
24 the loss of protected trees due to the process of land development;
25 and

26 **WHEREAS**, the standards articulated in Article 25 of the
27 Jacksonville City Charter, passed by a public referendum garnering
28 80% approval of the voters of Duval County, and which was approved
29 in every voting precinct in the County, set a minimum standard for
30 tree protection for the City so as to promote the health, safety and
31 welfare of the current and future residents of Duval County; and

WHEREAS, Section 656.1204, *Ordinance Code*, sets a higher standard but emphasizes that these two regulations must be read in concert, rather than in opposition, such that all requirements set forth in Article 25 of the Jacksonville City Charter shall be met in addition to the provisions of Chapter 656, Part 12, Subpart B, *Ordinance Code*; and

WHEREAS, the City Council desires to provide economic incentives to entities for development or redevelopment of affordable housing and workforce housing projects as described herein that increase the inventory of these needed residences in the City; and

WHEREAS, the amendment to Chapter 656, *Ordinance Code*, proposed herein would allow the application of an alternative mitigation cost calculation as an incentive for development or redevelopment of affordable housing and/or workforce housing and does not conflict with the minimum standards set forth in Article 25 of the Jacksonville City Charter; and

WHEREAS, the total combined funds in the two Tree Protection and Related Expenses Trust Funds currently exceeds \$20,000,000; and

WHEREAS, the current staff of the Public Works Department, only one of which is funded by the Tree Protection and Related Expenses Trust Fund (the "Tree Fund"), cannot scout for, plan for, administer, provide follow-up inspections for, and maintain enough tree planting projects in a timely manner to best serve the City to restore a healthy, thriving tree canopy; and

WHEREAS, the amendment to Chapter 111, *Ordinance Code*, provided herein is within both the letter and spirit of Article 25 of the Jacksonville City Charter and Section 111.760, *Ordinance Code*, and proposes to use funds from the Tree Protection and Related Expenses Trust Fund codified in Section 111.760, *Ordinance Code*, to pay the salary and benefits to hire/retain Florida-licensed landscape architects, certified arborists, and certified urban foresters, and

to obtain and maintain the equipment necessary for those positions to perform assigned duties, so long as the responsibilities and duties of each Tree Fund funded position and the use of said equipment are solely and exclusively for the purposes of planning, design, implementation, inspection and maintenance of tree planting projects that utilize Tree Protection and Related Expenses Trust Fund funds in keeping with all applicable laws and rules regarding use of said funds; now therefore

BE IT ORDAINED by the Council of the City of Jacksonville:

Section 1. Amending Section 111.760 (Tree Protection and Related Expenses Trust Fund), Part 7 (Environment and Conservation), Chapter 111 (Special Revenue and Trust Accounts), Ordinance Code. Section 111.760 (Tree Protection and Related Expenses Trust Fund), Part 7 (Environment and Conservation), Chapter 111 (Special Revenue and Trust Accounts), *Ordinance Code*, is hereby amended to read as follows:

CHAPTER 111 - SPECIAL REVENUE AND TRUST ACCOUNTS

*** * ***

PART 7. - ENVIRONMENT AND CONSERVATION

*** * ***

Sec. 111.760. - Tree Protection and Related Expenses Trust Fund.

There is created within the General Trust and Agency Fund a trust fund account to be known as the Tree Protection and Related Expenses Trust Fund, hereinafter referred to as the "Fund"~~Fund~~, into which shall be deposited all contributions and fines collected or imposed, together with any donation, gift, grant, or other sum of money as may from time to time be appropriated by Council, and all monies recovered by the City as civil fines pursuant to Section 656.1208; provided, however, that monies collected as administrative costs or attorneys' fees or costs of litigation shall be paid directly to the City. The funds deposited in the Fund~~this trust fund~~, together

with any interest accrued thereon, shall be expended for providing trees, and maintaining trees, within City rights-of-way and on other lands owned by the City, its agencies or authorities, or upon which other ownership control may be exerted by the City, its agencies or authorities, including parks, public areas and easements, and also along all other public rights-of-way and on all other public lands in Duval County.

The funds deposited in the Fund~~this trust fund~~, together with any interest accrued thereon, may also be used to pay the salary and benefits of the following:~~one City Arborist position~~.

1. City Landscape Architects, which shall be licensed Florida landscape architects pursuant to Chapter 481, Part II, Florida Statutes;

2. City Arborists, which shall be certified by the International Society of Arboriculture as Certified Arborist Municipal Specialists; and

3. City Urban Foresters, which shall be certified by the International Society of Arboriculture as Certified Urban Forest Professionals.

The positions~~City Arborist position~~ authorized herein shall be exclusively focused on the planning, design, implementation, inspection, and maintenance of tree planting projects funded by the Fund in accordance with all laws and rules applicable to use of funds deposited in said Fund, planting of trees and other activities directly supporting public tree planting projects in the City which utilize monies from this Fund~~trust fund~~ or the Tree Protection and Related Expenses Trust Fund, codified in Article 25 of the Jacksonville City Charter.

Such additional positions shall be reviewed by the Tree Commission who shall specifically opine, in a memorandum to the Mayor and the Council, regarding the necessity of each position and the

1 relatedness of those positions to fulfilling the goals of the Fund.

2 The funds deposited in the Fund, together with any interest
3 accrued thereon, may also be used to procure the equipment necessary
4 for the above listed positions to perform assigned duties so long as
5 the use of said equipment is exclusively focused on the tree planting
6 projects and other activities directly supporting the tree planting
7 projects that utilize monies from this Fund or the Tree Protection
8 and Related Expenses Trust Fund, codified in Article 25 of the
9 Jacksonville City Charter. Any equipment expenditure over \$75,000
10 shall be reviewed by the Tree Commission who shall specifically opine,
11 in a memorandum to the Mayor and the Council, regarding the necessity
12 of the equipment to fulfilling the goals of this Fund or the Tree
13 Protection and Related Expenses Trust Fund, codified in Article 25
14 of the Jacksonville City Charter.

15 The Director of the Finance Department ~~and Administration~~ is
16 authorized and directed to make disbursements from the Fund ~~this fund~~,
17 after Council appropriation, upon written requisition for such
18 purposes signed jointly by the Director of Public Works and the
19 Director of Parks, Recreation and Community Services. Monies
20 deposited in this trust fund shall not lapse at the close of any
21 fiscal year, but shall carry over to the next fiscal year.

22 In no case whatsoever shall these trust funds be considered as
23 the sole source of revenue for funds necessary to meet the normal
24 landscaping needs of the City's recreation, park or conservation
25 lands, or public right-of-way.

26 The total amount appropriated from these trust funds for tree
27 maintenance in any fiscal year shall not exceed an amount equal to
28 25 percent of the amount budgeted in that fiscal year for tree
29 maintenance activities in the Public Works Department. Any
30 appropriation of trust funds for tree maintenance shall be used to
31 supplement, not replace, monies otherwise appropriated for tree

1 maintenance by the Public Works Department, and shall be used to
2 undertake activities intended to extend the life of existing trees.

3 The Fund shall not be used for the purchase of Phoenix
4 dactylifera (True Date Palm), unless: (1) it is for the replacement
5 of a Phoenix dactylifera that meets both of the following conditions:

6 (a) The palm has been damaged due to a man-made incident or
7 lightening. Decline due to fungus, disease, or related failure due
8 to incompatible soil conditions or habitat, shall not be a reason for
9 replacement; (b) The palm is part of a streetscape scheme that would
10 become visually imbalanced if not replaced with the same genus and
11 species of palm; or (2) The palms are planted in the area delineated
12 as described as follows: Beginning at the confluence of the St. Johns
13 River and the Atlantic Ocean, follow the southern edge of the St.
14 Johns River westward, then south southwest, to the eastern edge of
15 Helen Cooper Floyd Park; then southeast to the western boundary of
16 the State Road A1A right-of-way; then southeast along the western
17 boundary of State Road A1A right-of-way to the western boundary of
18 the Mayport Road right-of-way; then generally south along the western
19 boundary of the Mayport Road right-of-way to and across Atlantic
20 Boulevard; then continuing south along the western boundary of the
21 Florida Boulevard right-of-way to the western boundary of the Penman
22 Road right-of-way; then south along the western boundary of the Penman
23 Road right-of-way, to and across Beach Boulevard; then east along the
24 southern boundary of the Beach Boulevard right-of-way to the western
25 boundary of the 3rd Street right-of-way; then south along the western
26 boundary of the 3rd Street right-of-way to the Duval County line;
27 then east to the Atlantic Ocean; then north along the mean high water
28 line to the point of beginning, as depicted on the map attached to
29 Ordinance 2018-524-E.

30 **Section 2. Amending Section 656.1206 (Permit procedure and**
31 **criteria for tree removal, relocation and replacement of protected**

trees) and Section 656.1208 (Enforcement of this Subpart B; violations and penalties; stopping work, correction of violation, settlement and reduction of fines pursuant to Policy criteria; procedures), Subpart B (Tree Protection), Part 12 (Landscape and Tree Protection Regulations), Chapter 656 (Zoning Code), Ordinance Code. Section 656.1206 (Permit procedure and criteria for tree removal, relocation and replacement of protected trees) and Section 656.1208 (Enforcement of this Subpart B; violations and penalties; stopping work, correction of violation, settlement and reduction of fines pursuant to Policy criteria; procedures), Subpart B (Tree Protection), Part 12 (Landscape and Tree Protection Regulations), Chapter 656 (Zoning Code), Ordinance Code, are hereby amended to read as follows:

CHAPTER 656 - ZONING CODE

*** * ***

PART 12. - LANDSCAPE AND TREE PROTECTION REGULATIONS

*** * ***

SUBPART B. - TREE PROTECTION

*** * ***

Sec. 656.1206. - Permit procedure and criteria for tree removal, relocation and replacement of protected trees.

*** * ***

(g) Protected trees identified for removal on the site clearing or tree removal permit application shall be replaced with new planted trees, unprotected trees or transplanted trees. Protected live oaks (*Quercus virginiana*) removed shall be replaced only with live oaks. The total caliper inches of replacement live oaks shall equal the total caliper inches of protected live oaks removed; for other removed protected trees, the total caliper inches of replacement trees shall equal one-third the total caliper inches removed. A waiver of this replacement requirement may be approved by the Chief if the

1 tree removal was for the purpose of removing dead, diseased,
2 dying or trees of similar condition or for trees whose roots
3 are causing severe damage, as determined in the sole discretion
4 of the Chief, to an adjacent structure. No waiver shall be
5 allowed for the removal of any tree whose continued existence
6 was necessary for compliance with the City's Landscape Code,
7 for receiving credit for conservation mitigation, or for any
8 tree which was planted as part of a mitigation requirement.
9 The total caliper inches for replacement of exceptional
10 specimen trees shall equal the total caliper inches of
11 exceptional specimen trees removed pursuant to Section
12 656.1205(d). When there are more than an average of two
13 exceptional specimen trees per acre removed on a particular
14 site, the required mitigation shall be increased by twice the
15 minimum caliper of all exceptional specimen trees lost in order
16 to compensate for that loss. If multi-trunked trees are used
17 as replacement trees, then the total caliper of the four
18 largest trunks shall equal the replacement caliper. Palms may
19 be used only to replace protected palms removed. Replacement
20 species used shall be approved by the Chief. Additionally, the
21 following provisions shall apply:

22 * * *

- 23 (4) New, preserved nonprotected, or transplanted exceptional
24 specimen trees or live oaks used as replacement for removed
25 exceptional specimen trees or protected live oaks shall be
26 two-inch ~~four-inch~~ caliper or greater.

27 * * *

- 28 (10) A tree used for replacement shall be at least ten feet from
29 any other tree planted, transplanted or preserved, except
30 that a grouping of trees which includes trees spaced less
31 than 10 feet away from another planted tree or preserved

1 tree may nonetheless be utilized under this Section upon
2 certification from a City Landscape Architect, City
3 Arborist or City Urban Forester satisfactory to the Chief
4 that each tree within the less-than ten foot spacing has a
5 reasonably good chance of survival. Greater spacing may be
6 required, based on a tree survey, to ensure survivorship
7 of a tree.

8 * * *

- 9 (14) If the applicant demonstrates to the satisfaction of the
10 Chief that the site cannot accommodate the total number of
11 required replacement trees as a result of insufficient
12 planting area, the applicant shall provide a monetary
13 contribution to the Tree Protection and Related Expenses
14 Trust Fund. The amount of such contribution shall be
15 determined as follows: For every two caliper inches, or
16 fraction thereof, of replacement trees which would
17 otherwise be required, the contribution shall be equal to
18 the retail value of a planted two-inch caliper nursery
19 grown shade tree. The retail value shall be calculated by
20 taking the average of the median current wholesale price,
21 published by North Florida nurseries, for a container
22 grown, ~~and a balled and burlapped~~ two-inch caliper live
23 oak, multiplied by two. The retail value shall be
24 recalculated and adjusted annually on October ~~first~~ 1.
25 However, as to development or redevelopment of affordable
26 housing and/or workforce housing the City will waive the
27 monetary contribution otherwise required by this
28 subsection to the City's Tree Protection and Related
29 Expenses Trust Fund for the total caliper-inches of
30 required replacement trees that are not planted on the
31 development site or at some other site in Duval County.

For purposes of this Section, the term "affordable housing and/or workforce housing" shall mean any development or redevelopment funded, wholly or in part, by a federal, state, or local affordable housing program recognized by the City and which includes enforcement measures within a development or similar agreement that provide for/require monitoring and/or auditing services by the developer or funding agency pertaining to compliance with an applicable affordability period requirement. The waiver authorized in this subsection shall sunset five years from the effective date of Ordinance 2025-102-E. This provision shall not be automatic but shall require further action by the City Council to effectuate the sunset.

* * *

Sec. 656.1208. - Enforcement of this Subpart B; violations and penalties; stopping work, correction of violation, settlement and reduction of fines pursuant to Policy criteria; procedures.

Removal of trees without a permit, or more trees than permitted, is a violation of this Subpart and shall be corrected.

* * *

(c) *Correction of violation when DBH inches removed is determinable.* A violation of this Subpart, when the DBH inches illegally removed is determinable shall be corrected within 90 calendar days from the date of the Notice of Violation. A fine shall be assessed, and the corrective action determined by the Chief of Development Services ("Assessment of Fine and Corrective Action"). Correction of the violation shall include: (1) payment of a fine; and (2) mitigation for the trees removed by planting replacement trees on the site. Fines may be reduced pursuant to subsection (f) (Settlement and Reduction of Fines and Corrective Action for violations when

DBH inches removed is determinable, pursuant to Policy criteria), below. Fines are separate from mitigation payments.

* * *

(2) *Calculation of the Mitigation.*

* * *

(ii) Prior to planting the Replacement Trees, the property owner shall submit a tree replanting plan to the Chief showing how the damage caused to the site by the violation will be mitigated. The replanting plan shall be subject to the review and approval of the Chief and the trees installed within the time limit stated on the Assessment of Fine and Corrective Action. Replacement Trees shall meet the requirements of Section 656.1206 (Permit procedure and criteria for tree removal, relocation and replacement of protected trees), ~~except that the minimum caliper of all Replacement Trees shall be four inches,~~ and the plan shall meet the requirements of Section 656.1217 (Landscape and Irrigation system plans required).

* * *

Section 3. Codification Instructions. The Codifier and the Office of General Counsel are authorized to make all chapter and division "tables of contents" consistent with the changes set forth herein. Such editorial changes and any other changes necessary to make the *Ordinance Code* consistent with the intent of this legislation are approved and directed herein, and changes to the *Ordinance Code* shall be made forthwith and when inconsistencies are discovered.

Section 4. Effective Date. This Ordinance shall become effective upon signature by the Mayor or upon becoming effective without the Mayor's signature.

Form Approved:

/s/ Mary E. Staffopoulos

Office of General Counsel

Legislation Prepared By: Shannon MacGillis

GC-#1681702-v1-2025-102-E.docx