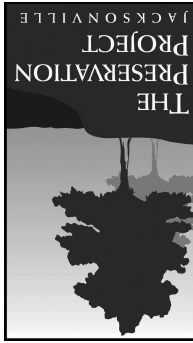




851 N. Market Street • Jacksonville, FL 32202
 (904) 630-CITY (2489)
 www.jaxparks.com

**CITY OF JACKSONVILLE
 PRESERVATION PROJECT**



This property is an example of how the St. Johns River Water Management District works with local governments and other agencies to purchase properties. The City of Jacksonville partners with the District in managing this property. If you have questions regarding the management of this property, please direct them through the contact information below.



CONSERVATION AREA

**Thomas
 Creek**

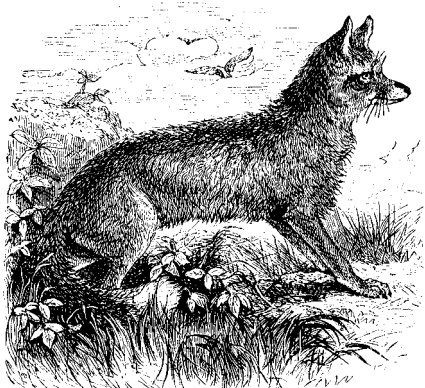
TRAIL GUIDE

TRAIL USE

The majority of lands owned and/or managed by the St. Johns River Water Management District use existing roads or fire lines, maintained primarily for land management activities, as trails. Maintenance activities (e.g., harrowing fire lines) will temporarily cause the surface of these areas to be uneven or to have unstable soils.

All trails are designated “multiple use” for hiking, bicycling and horseback riding unless otherwise noted. Multiuse trails will be marked with a 4-inch diamond, with double diamonds indicating a change in direction. These are your trails, for your pleasure and enjoyment. Please be courteous to other trail users and use trail etiquette.

Plan ahead. Many of the trails are “back country trails” where you may not encounter another trail user or find shelter from the weather. Plan accordingly for your safety!



TRAIL ETIQUETTE

Hikers yield to equestrians, and bicyclists yield to both.

Let a horse and rider know of your presence (to avoid spooking horse or rider). Equestrian users, please ride single file in one track (in both directions) on two-track trails to leave the other track firm and stable for other users.

Keep dogs on a leash.

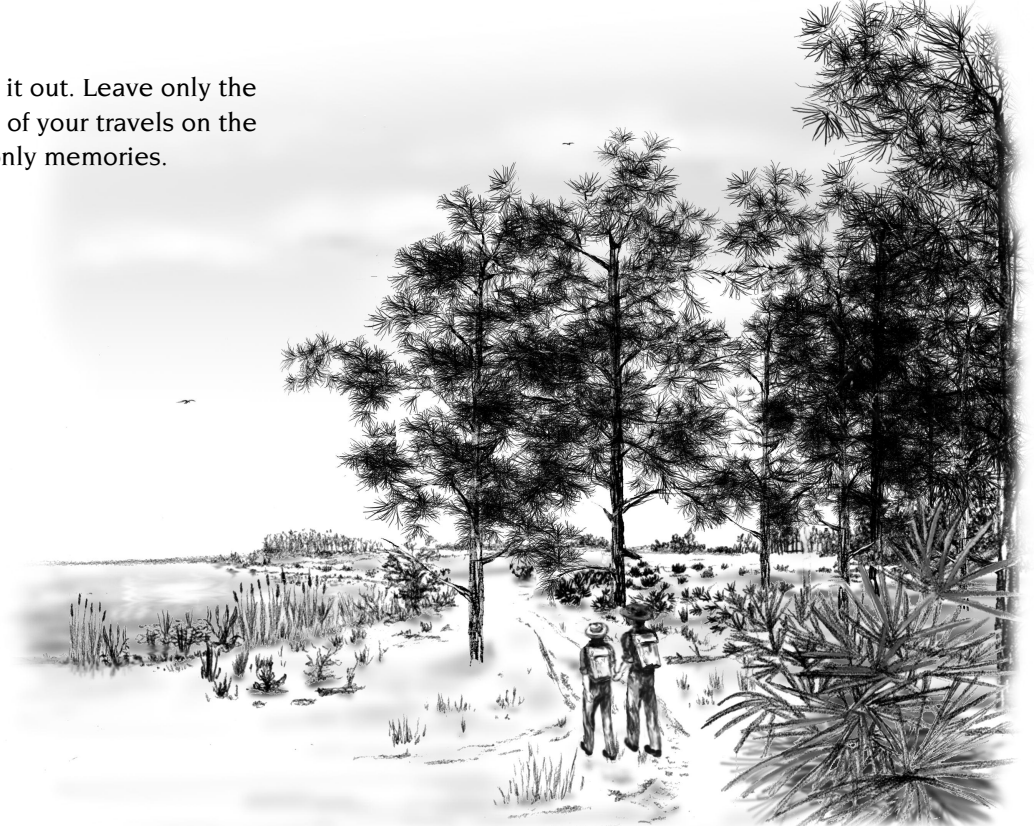
Animal and plant life are protected. Do not kill, trap or molest any mammal, bird, reptile or amphibian. Do not pick, cut, carve, break off limbs from, or mutilate any plant life.

Pack it in, pack it out. Leave only the minimum trace of your travels on the trail and take only memories.

COMFORT AND SAFETY

- Many trails offer no shade or shelter, so be prepared for sun, excessive heat or sudden thunderstorms. Make sure you have plenty of water, snacks, sunscreen and insect repellent.
- Many District lands are wildlife management areas (WMAs) where hunting occurs. Please check for hunting dates and areas before using trails.
- Although most District lands do not permit motorized vehicular access, you may occasionally encounter staff vehicles and equipment.

The District and City of Jacksonville hope you have an enjoyable trail experience.



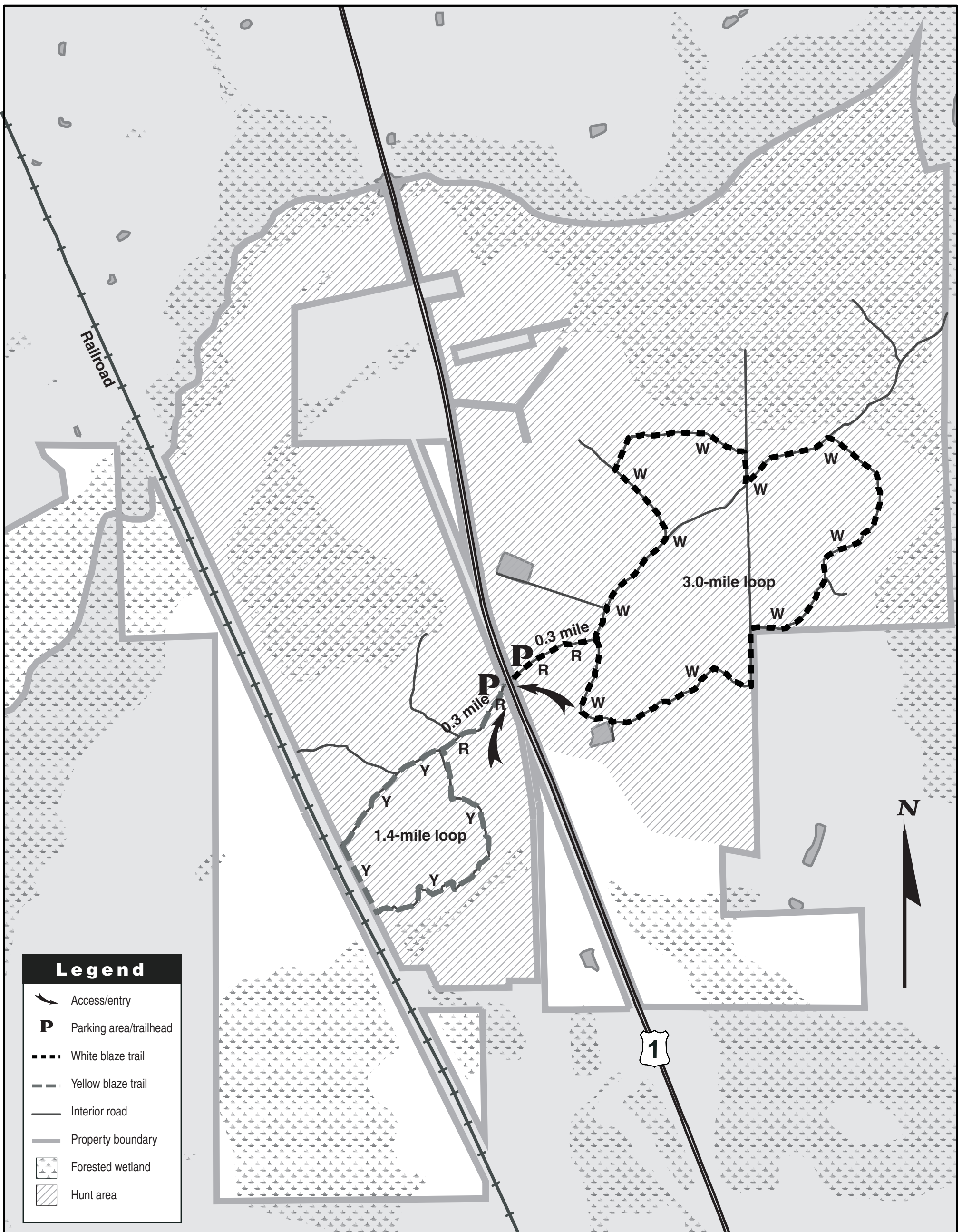
When the District buys land, the benefits are far-reaching for the public. The District's main goal of buying land is to protect the water resources within, adjoining or beneath the land's boundaries.

Beyond meeting that goal, District land purchases preserve part of “natural” Florida for the state's future generations.

In addition, putting land into public ownership protects wildlife and plant habitat, opens the land for recreation and provides a place for environmental education.

Ninety-eight percent of the land the District buys is open to the public for activities that are compatible with conservation. Some of the popular uses include hiking, biking, wildlife viewing, horseback riding, canoeing, camping, hunting, fishing and picnicking. Just 2 percent of the District's lands are closed, due to ongoing construction or conservation projects.

To inform the public of recreational and educational opportunities, the District erects entrance signs and informational kiosks. The District also publishes its *Recreation Guide to District Lands*, a free guide to the public properties, which includes maps and information about each property. The guide is available by calling (800) RALLY-22; an online version is available at www.srwmwd.com/recreationguide/index.html.



Legend

- Access/entry
- P** Parking area/trailhead
- White blaze trail
- Yellow blaze trail
- Interior road
- Property boundary
- Forested wetland
- Hunt area



Trail Guide
Thomas Creek
Conservation Area

Activities allowed on property

- Wildlife viewing
- Hiking
- Bicycling
- Horseback riding

Thomas Creek trails

- White blaze — W
- Yellow blaze — Y
- Red blaze connector — R