



2022
2023

January

February

March

April

May

June

July

August

September

October

November

December

Total Complaints Past Month

14

Total Complaints Current Month

15

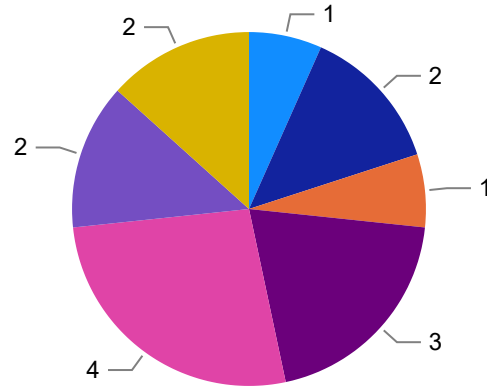
Odor Events Past Month

0

Odor Events Current Month

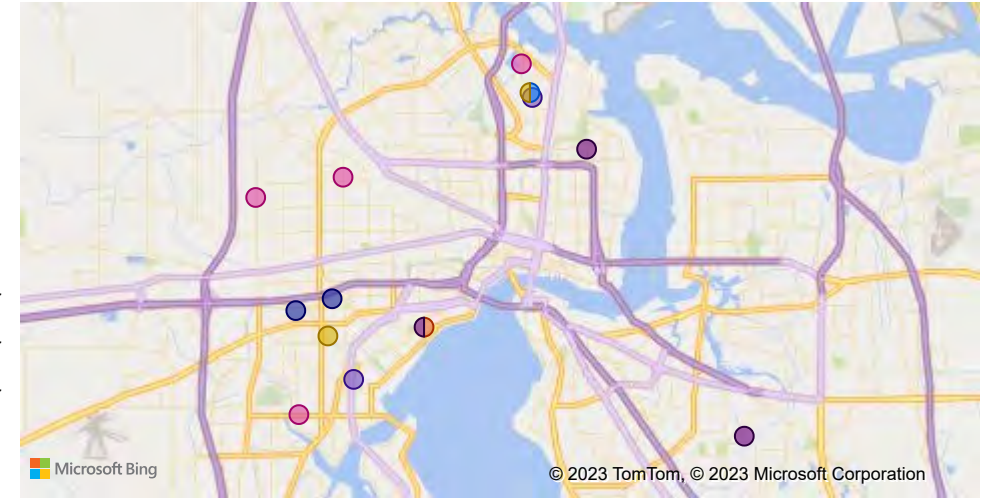
0

Complaints by Hour of the Day

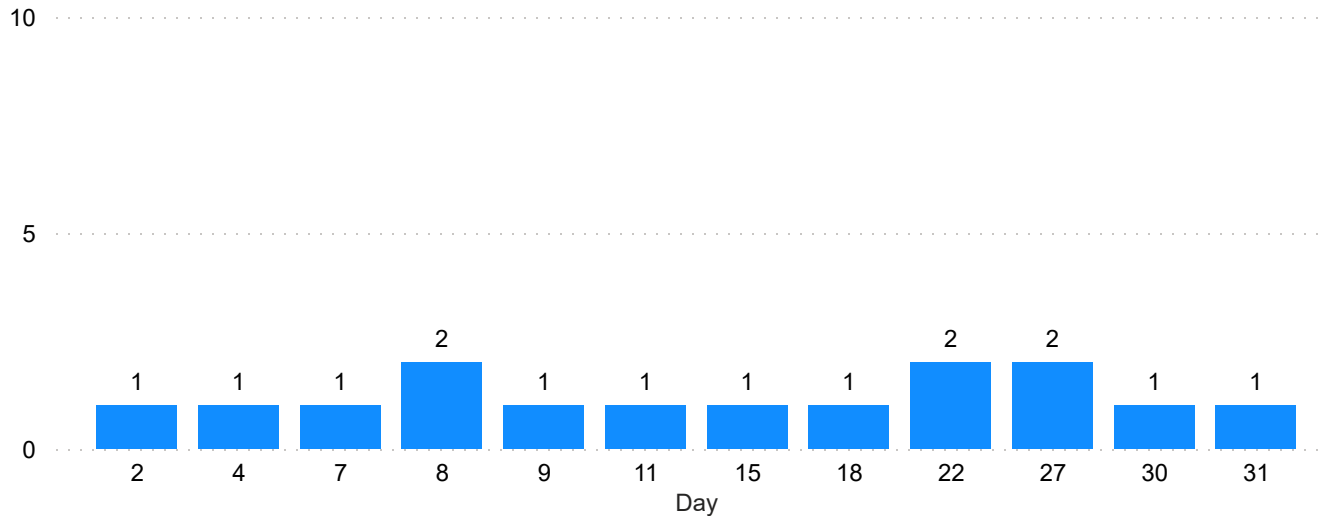


Complaints Map

- 1: 0-3 hr
- 2: 3-6 hr
- 3: 6-9 hr
- 4: 9-12 hr
- 5: 12-15 hr
- 6: 15-18 hr
- 7: 18-21 hr



Number of Complaints per Day



Month Activities

Date	Activity
Friday, March 31, 2023	No activities

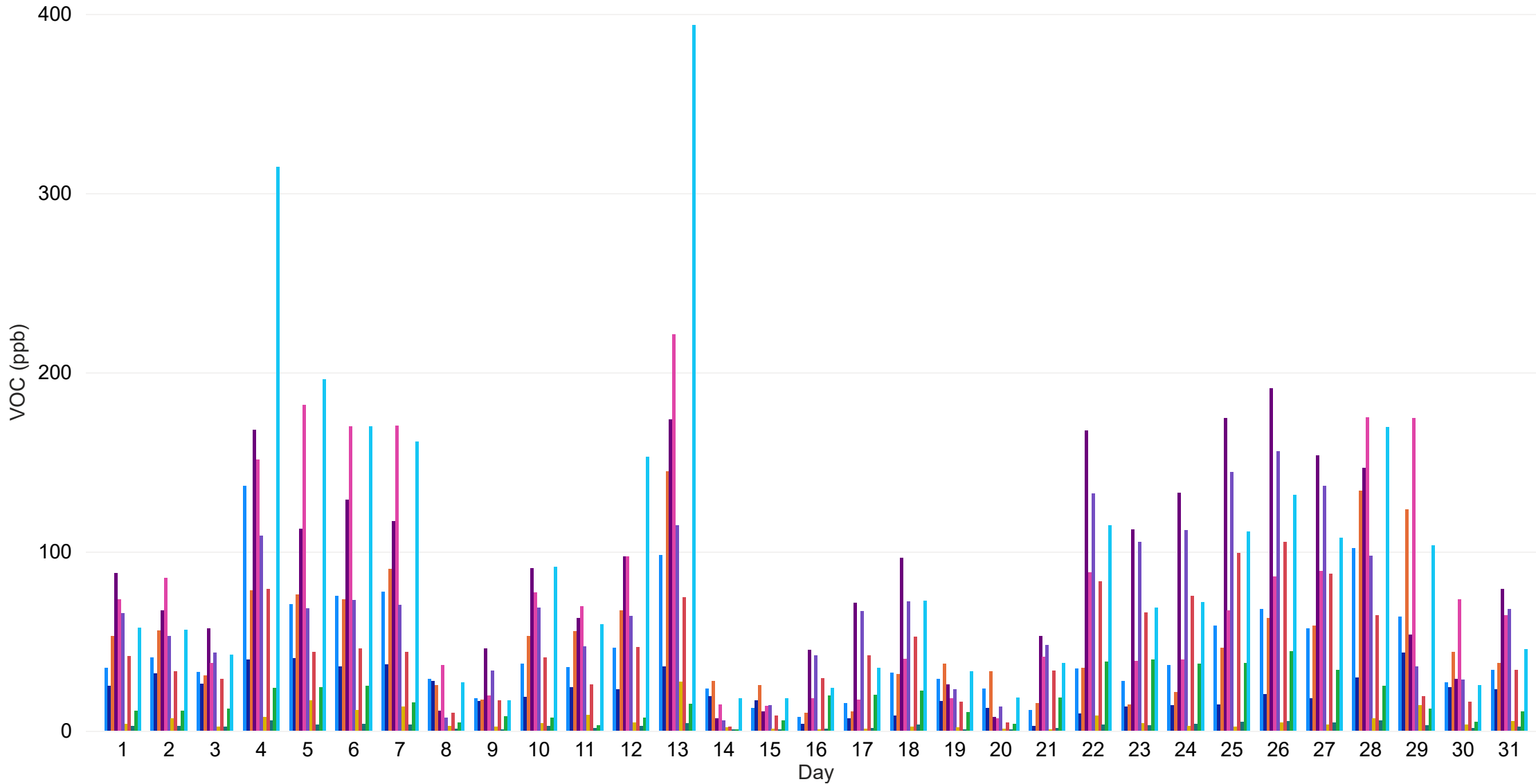
Top Complainants Addresses

Address	Number of Complaints
2779 Oak St, Jacksonville, FL 32205	2
424 Demper Dr, Jacksonville, FL 32208	2
1584 Geraldine Dr, Jacksonville, FL 32205	1
1932 Lane Ave N, Jacksonville, FL 32254	1
2231 Melson Ave, Jacksonville, FL 32254	1
2578 Hazel Dr, Jacksonville, FL 32216	1

*An odor event is defined as a day with 5 or more complaints (columns in red)

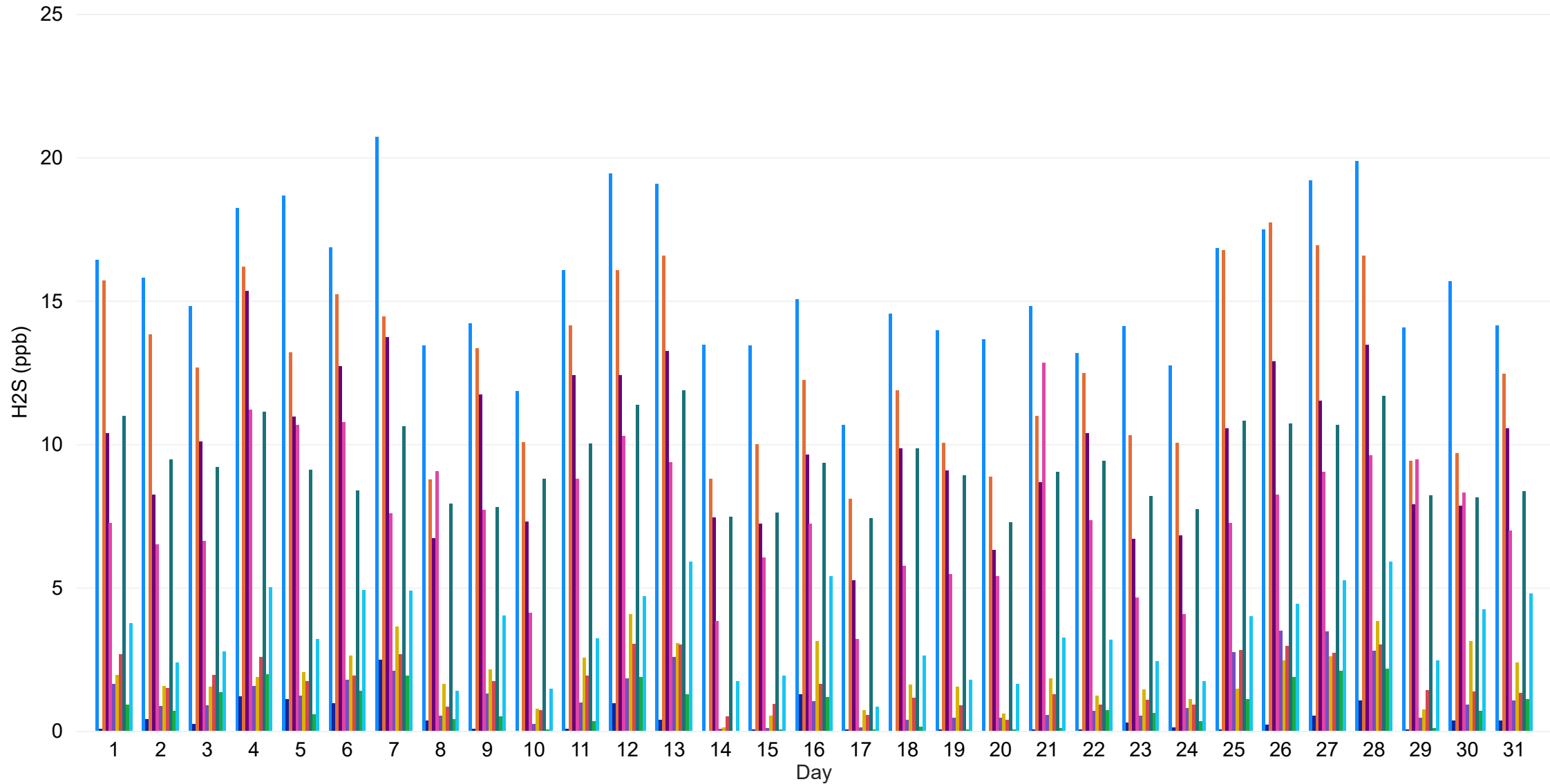
VOC Daily Averages (ppb)

- AC 1 - eNose 1
- AC 2 - eNose 2
- SYM 3 - eNose 3
- SYM 2 - eNose 4
- SYM 1 - eNose 5
- IFF 1 - eNose 6
- IFF 2 - eNose 7
- RHD 1 - eNose 8
- RHD 2 - eNose 9
- RVL 1 - eNose 10
- RVL 2 - eNose 11



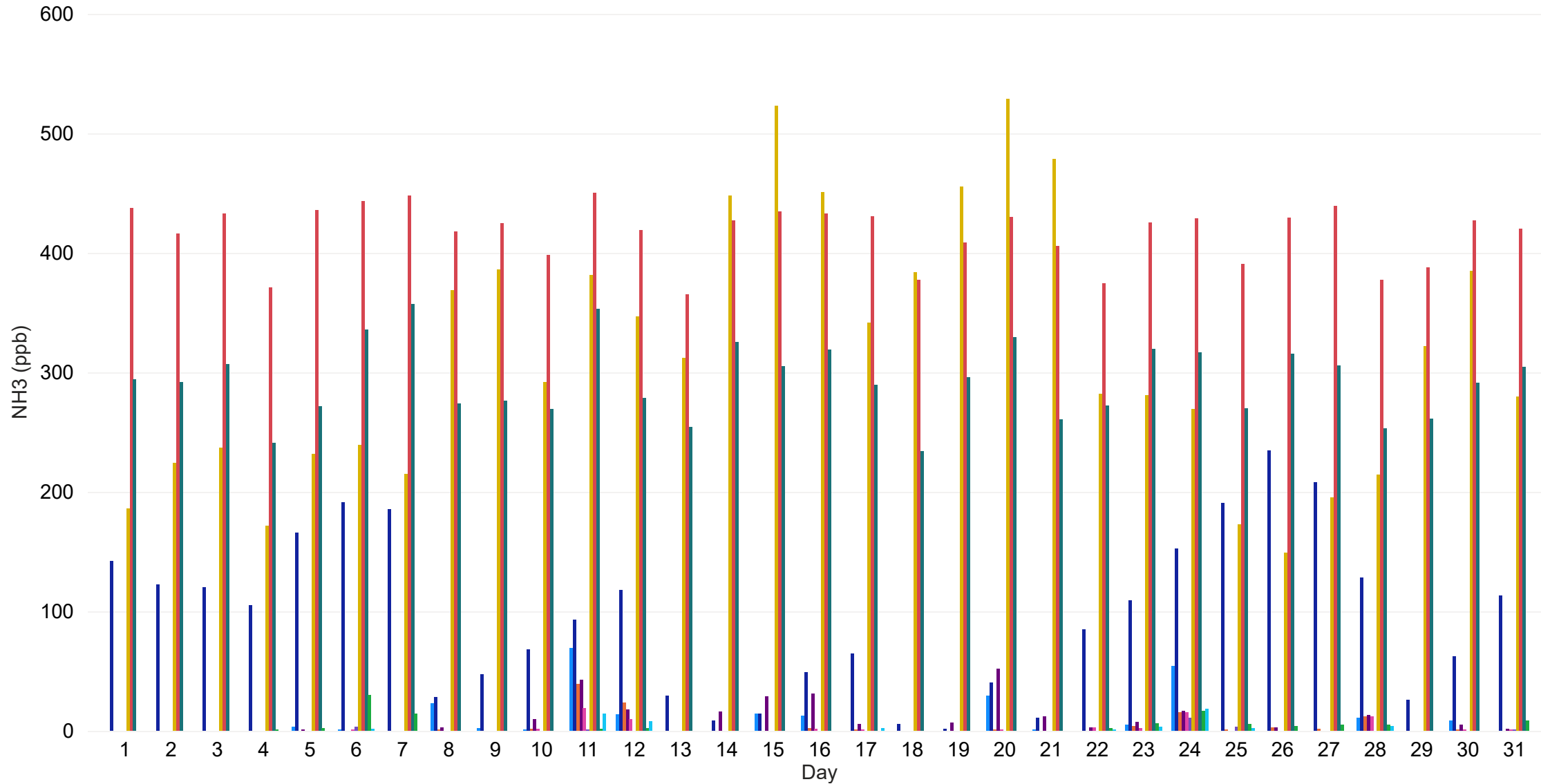
H2S Daily Averages (ppb)

- AC 1 - eNose 1
- AC 2 - eNose 2
- SYM 3 - eNose 3
- SYM 2 - eNose 4
- SYM 1 - eNose 5
- IFF 1 - eNose 6
- IFF 2 - eNose 7
- RHD 1 - eNose 8
- RHD 2 - eNose 9
- RVL 1 - eNose 10
- RVL 2 - eNose 11



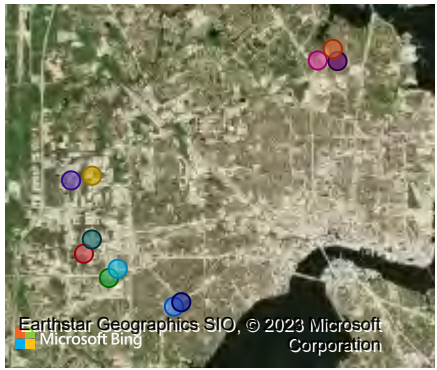
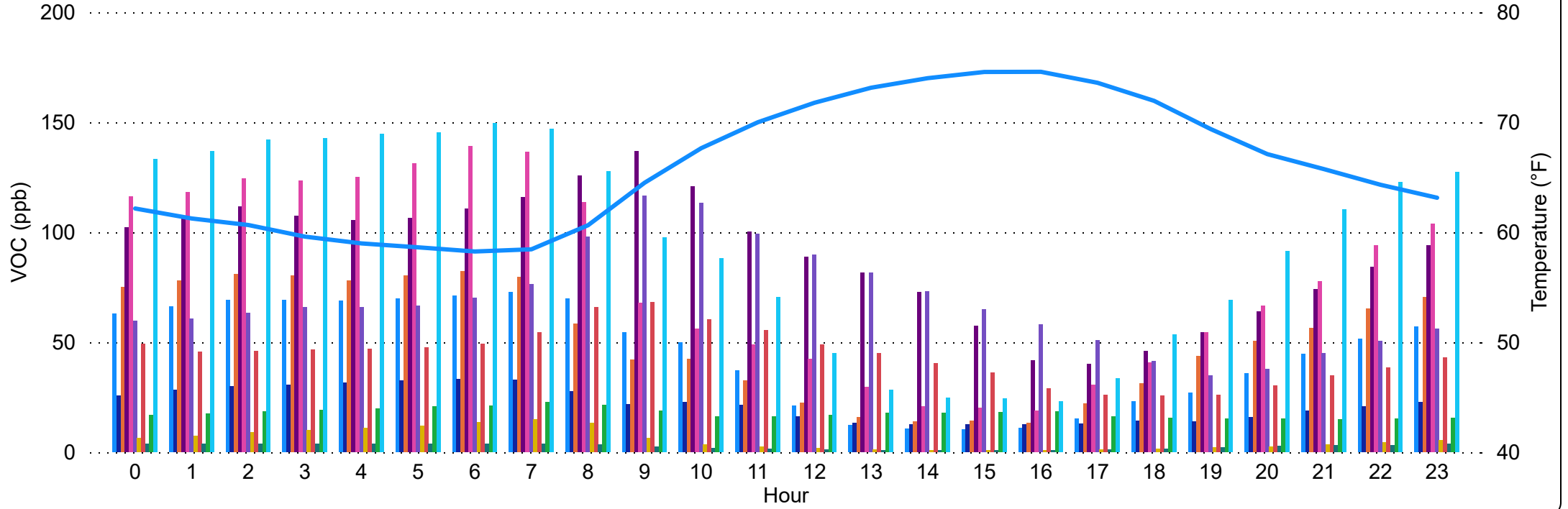
NH3 Daily Averages (ppb)

- AC 1 - eNose 1
- AC 2 - eNose 2
- SYM 3 - eNose 3
- SYM 2 - eNose 4
- SYM 1 - eNose 5
- IFF 1 - eNose 6
- IFF 2 - eNose 7
- RHD 1 - eNose 8
- RHD 2 - eNose 9
- RVL 1 - eNose 10
- RVL 2 - eNose 11

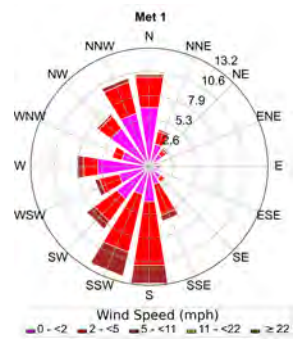


VOC Hourly Averages (ppb) & Met 1 Temperature (°F)

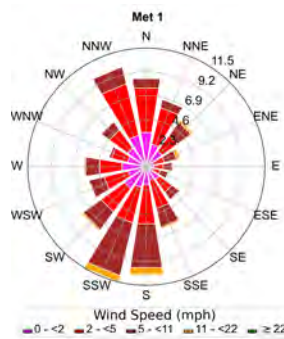
- AC 1 - eNose 1
- AC 2 - eNose 2
- SYM 3 - eNose 3
- SYM 2 - eNose 4
- SYM 1 - eNose 5
- IFF 1 - eNose 6
- IFF 2 - eNose 7
- RHD 1 - eNose 8
- RHD 2 - eNose 9
- RVL 1 - eNose 10
- RVL 2 - eNose 11
- Met 1 - Temperature (°F)



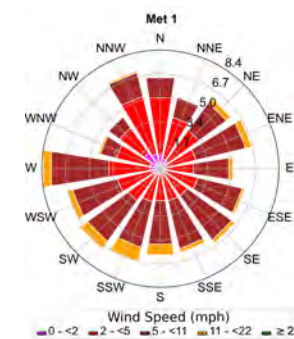
Wind Rose Dawn: 00:00-05:00



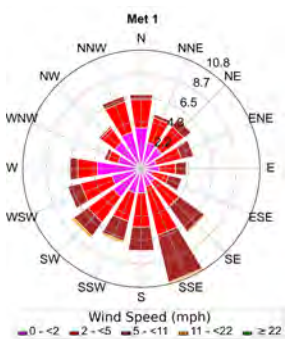
Wind Rose Morning: 06:00-11:00



Wind Rose Afternoon: 12:00-17:00

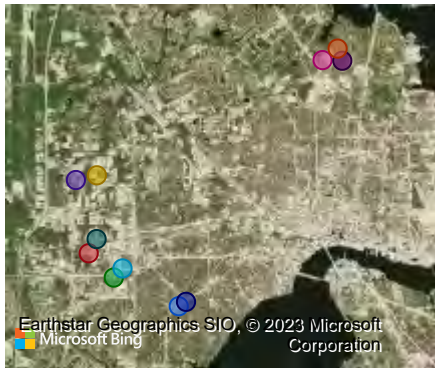
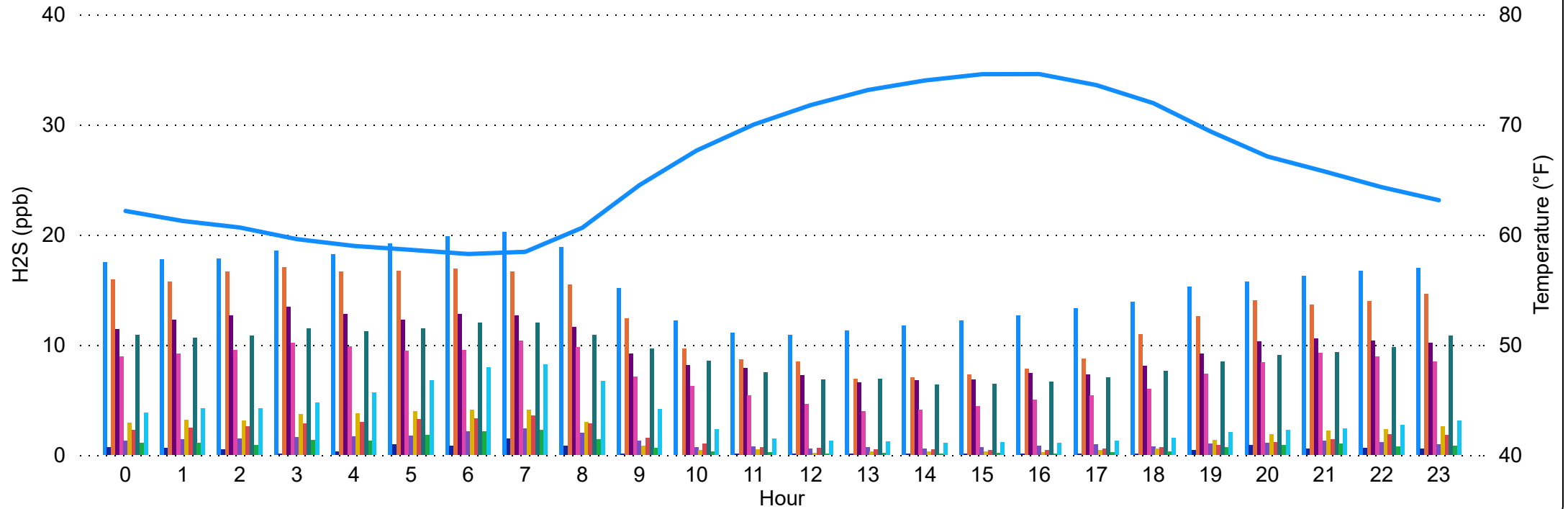


Wind Rose Night: 18:00-23:00

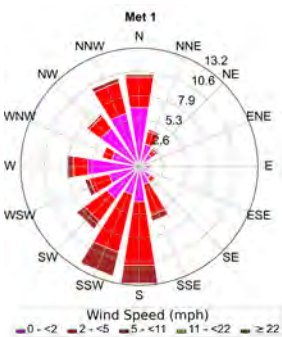


H2S Hourly Averages (ppb) & Met 1 Temperature (°F)

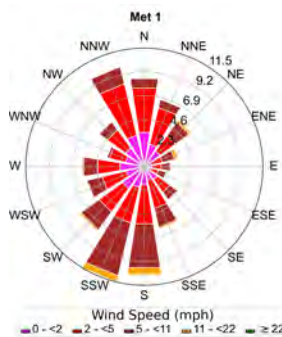
- AC 1 - eNose 1
- AC 2 - eNose 2
- SYM 3 - eNose 3
- SYM 2 - eNose 4
- SYM 1 - eNose 5
- IFF 1 - eNose 6
- IFF 2 - eNose 7
- RHD 1 - eNose 8
- RHD 2 - eNose 9
- RVL 1 - eNose 10
- RVL 2 - eNose 11
- Met 1 - Temperature (°F)



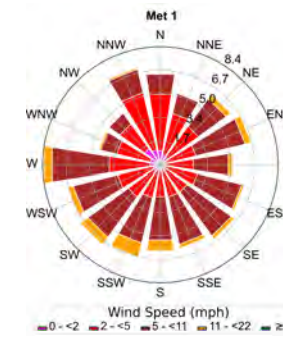
Wind Rose Dawn: 00:00-05:00



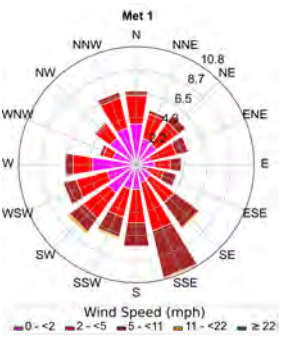
Wind Rose Morning: 06:00-11:00



Wind Rose Afternoon: 12:00-17:00

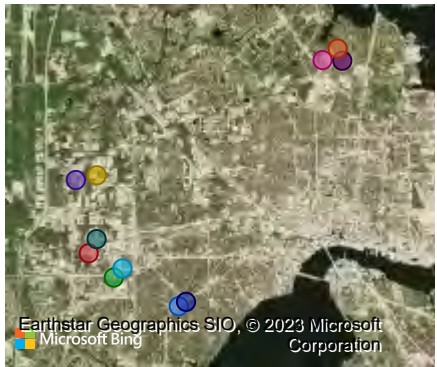
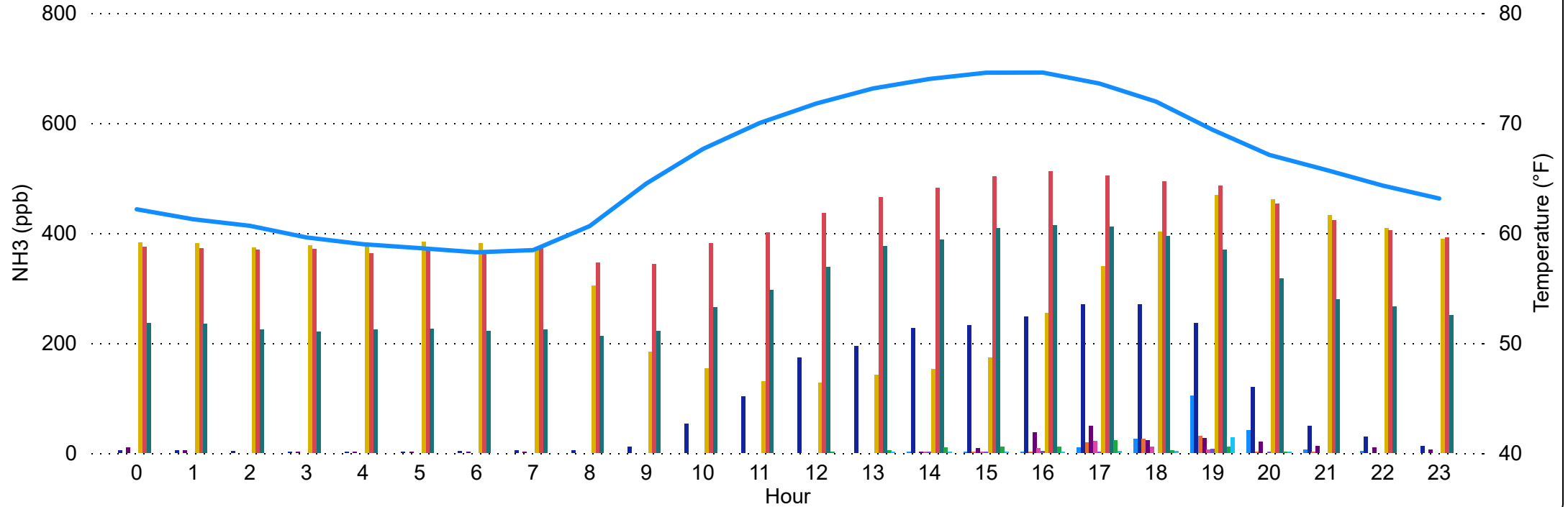


Wind Rose Night: 18:00-23:00



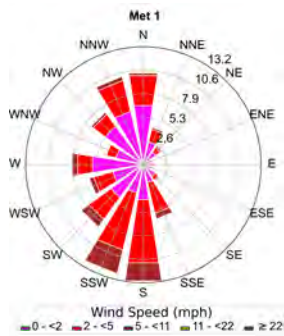
NH3 Hourly Averages (ppb) & Met 1 Temperature (°F)

- AC 1 - eNose 1
- AC 2 - eNose 2
- SYM 3 - eNose 3
- SYM 2 - eNose 4
- SYM 1 - eNose 5
- IFF 1 - eNose 6
- IFF 2 - eNose 7
- RHD 1 - eNose 8
- RHD 2 - eNose 9
- RVL 1 - eNose 10
- RVL 2 - eNose 11
- Met 1 - Temperature (°F)

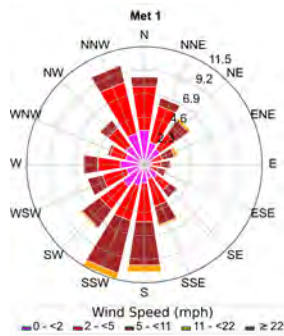


Earthstar Geographics SIO, © 2023 Microsoft Corporation
Microsoft Bing

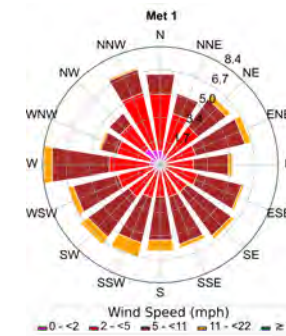
Wind Rose Dawn: 00:00-05:00



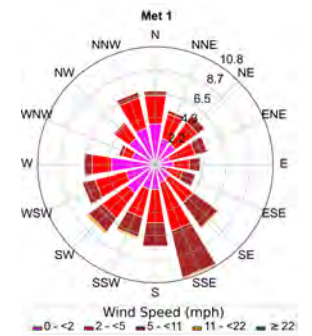
Wind Rose Morning: 06:00-11:00



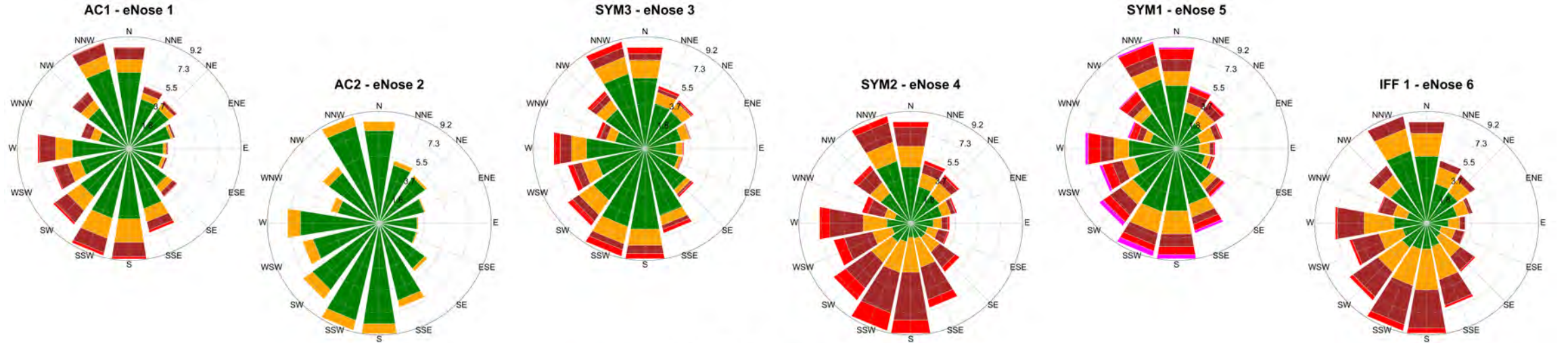
Wind Rose Afternoon: 12:00-17:00



Wind Rose Night: 18:00-23:00

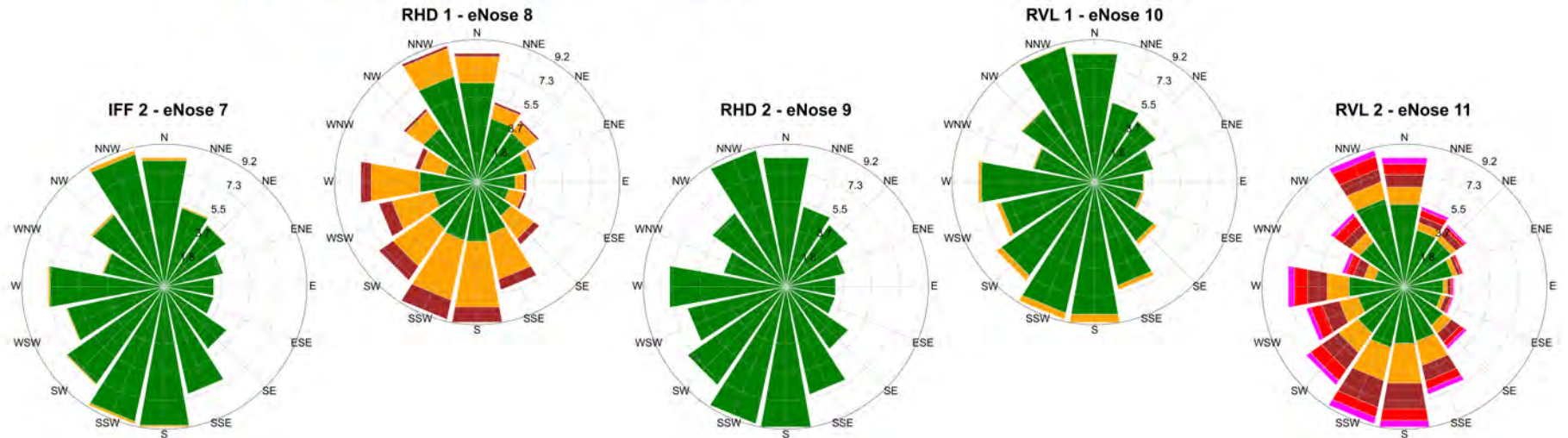


VOC Pollution Roses

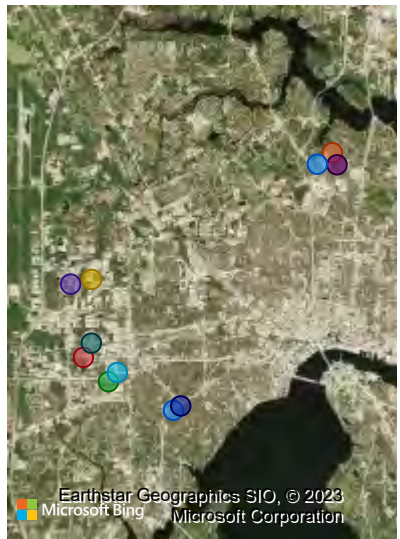


VOC (ppb)

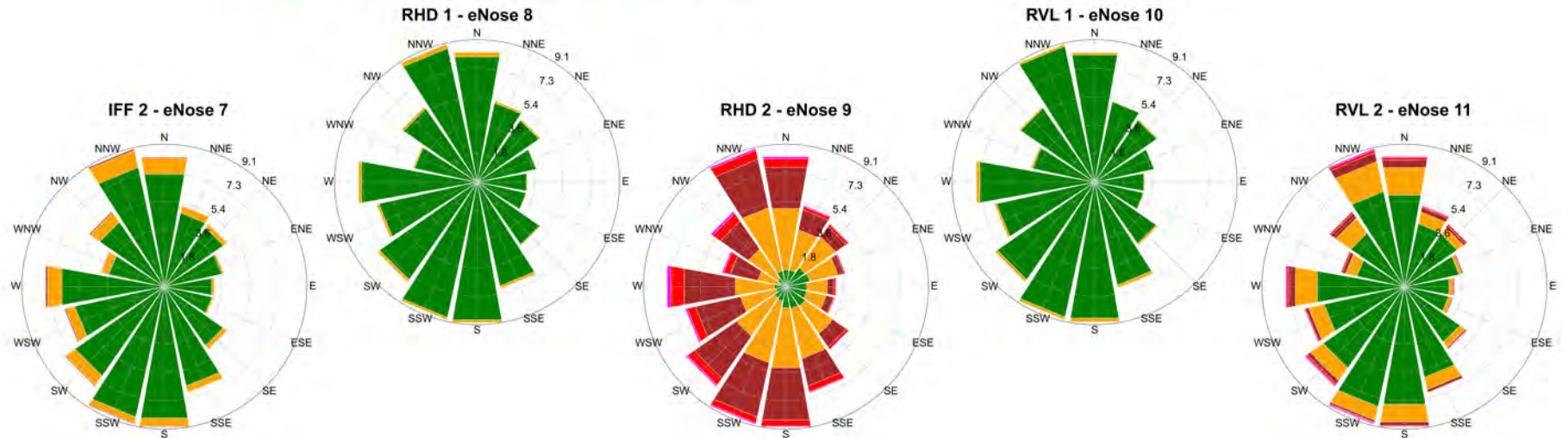
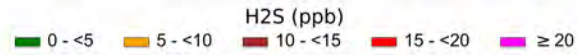
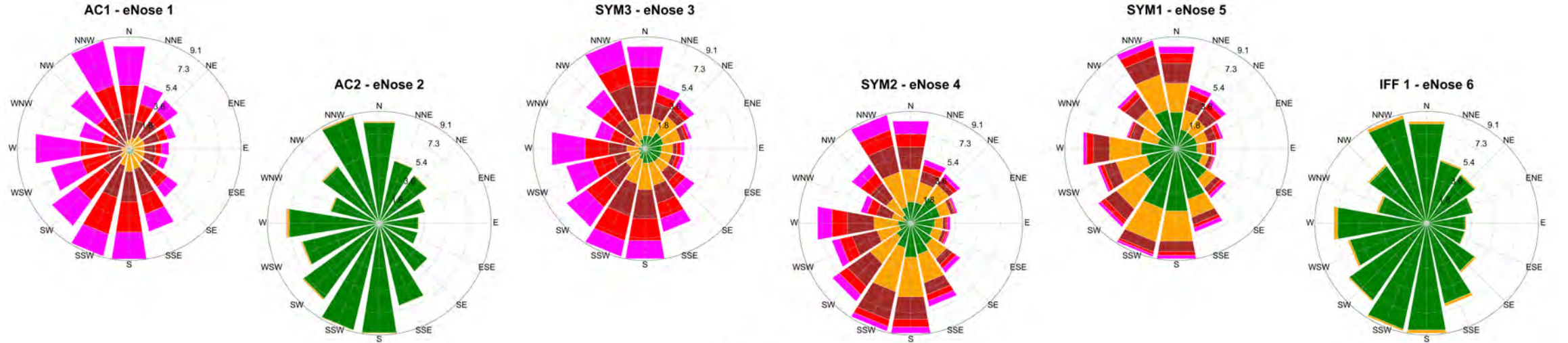
0 - <50 50 - <100 100 - <200 200 - <400 ≥ 400



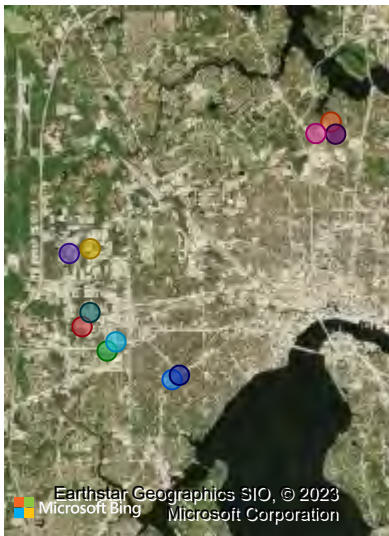
- AC1 - e1
- AC2 - e2
- SYM3 - e3
- SYM2 - e4
- SYM1 - e5
- IFF 1 - e6
- IFF 2 - e7
- RHD 1 - e8
- RHD 2 - e9
- RVL 1 - e10
- RVL 2 - e11



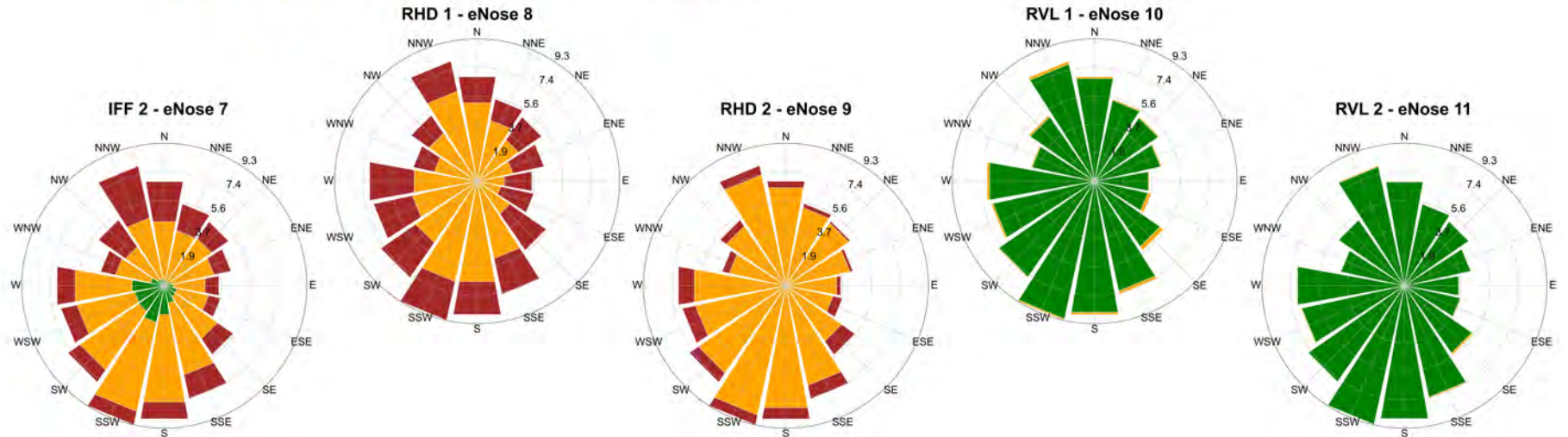
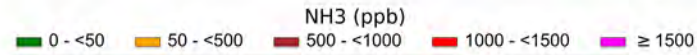
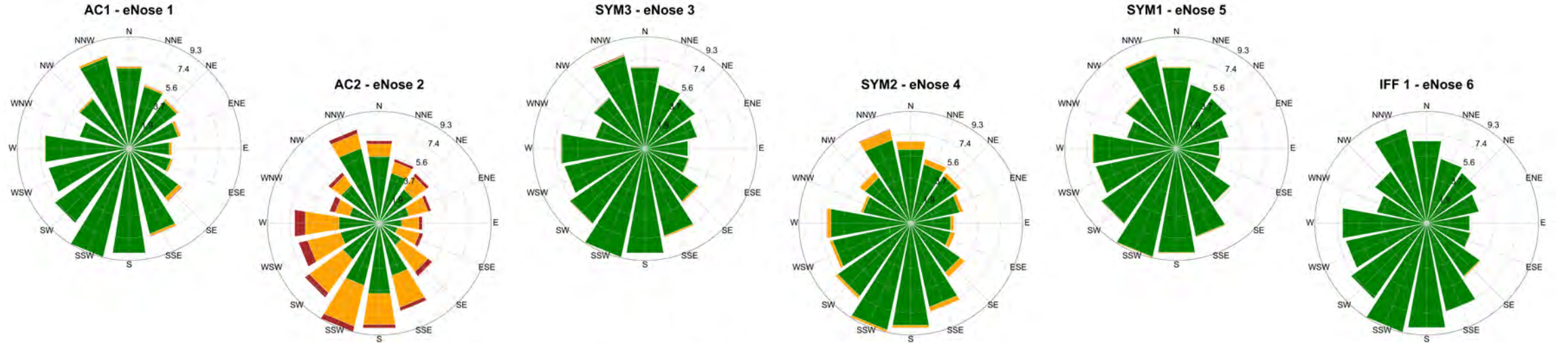
H2S Pollution Roses



- AC1 - e1
- AC2 - e2
- SYM3 - e3
- SYM2 - e4
- SYM1 - e5
- IFF 1 - e6
- IFF 2 - e7
- RHD 1 - e8
- RHD 2 - e9
- RVL 1 - e10
- RVL 2 - e11



NH3 Pollution Roses



- AC1 - e1
- AC2 - e2
- SYM3 - e3
- SYM2 - e4
- SYM1 - e5
- IFF 1 - e6
- IFF 2 - e7
- RHD 1 - e8
- RHD 2 - e9
- RVL 1 - e10
- RVL 2 - e11

